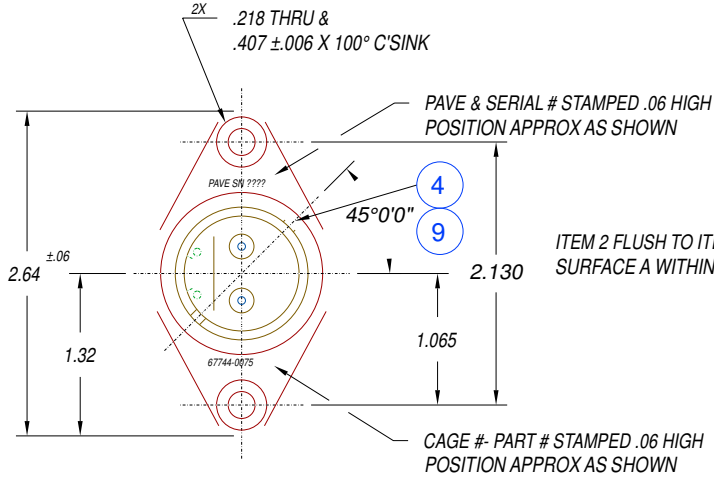
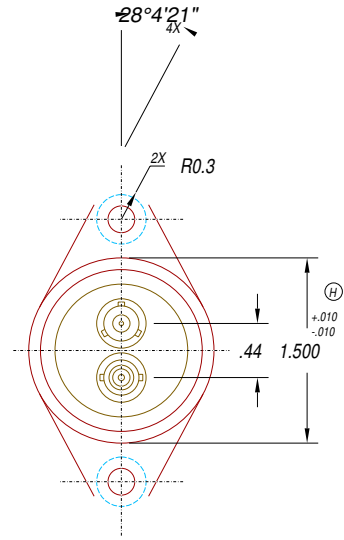
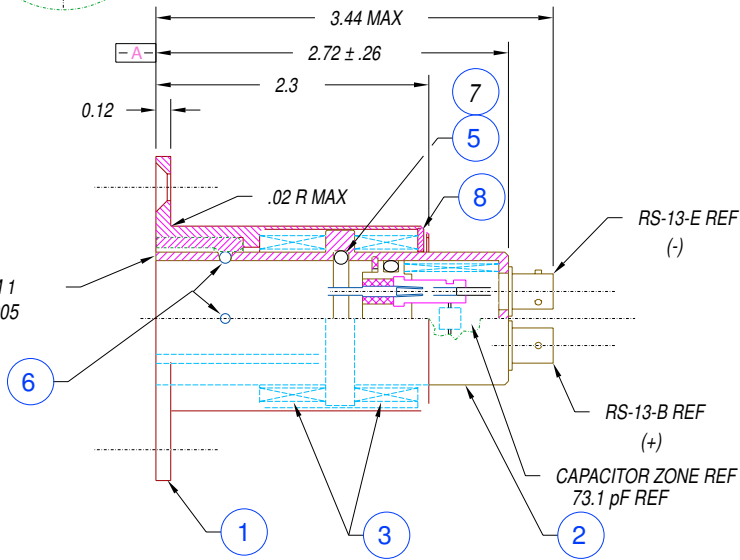


B299-5 CONNECTOR
SUPPLIED BY DESC - REF



ITEM 2 FLUSH TO ITEM 1
SURFACE A WITHIN .005



- NOTES:
1. ASSEMBLY TO MATE WITH B299-5 ASSEMBLY SUPPLIED BY DESC.
 2. 73.1 pF ±1.4 pF ACROSS CENTER PINS OF RS-13-B & -E CONNECTORS IS SHUNTED WHEN MATED WITH ABOVE ASSEMBLY AT 25°C. CHECK FOR .5 OHM CONTINUITY FROM B299-5 ASSEMBLY TO RS-13-B & -E CONNECTOR WHEN MATED & CAPACITANCE ACROSS RS-13-E & -B DROPS TO 8 pF OR LESS.
 3. INSERTION FORCE FOR MATING B299-5 ASSEMBLY IS 16 LBS ± 8 LBS.
 4. MATING B299-5 ASSEMBLY REQUIRES FULL INSERTION & FULL EXTRACTION OTHERWISE ITEM 6 IN 0075 ASSEMBLY WILL LOCK IT.
 5. APPLY VAC GOOP O-RING LUBRICANT INTO ITEM 2 GROOVE BEFORE O-RING.
 6. HELIUM LEAK TEST INSIDE OUT TO 1 X 10⁻⁶ STD CC/SEC MAX.
 7. MAXIMUM WEIGHT OF ASSEMBLY IS 227 g (.5 LBS).
 8. FILL CAPACITOR ZONE WITH HELIUM + NITROGEN GAS WITH A DEW POINT OF -65° F. PINCH & SEAL CAPACITOR ZONE & SEE NOTE 6.
 9. ELECTRICAL HYPOT TEST TO 500 VAC FOR 1 SEC MIN.
 10. THE TEMPERATURE COEFFICIENT OF CAPACITANCE OF THE CAPACITOR SHALL BE ±30 PPM/ °C FROM -55 °C TO 71 °C SHALL BE °C.

9	----	A/R	ANEROBIC ADHESIVE (T942)
8	0091	1	FLANGE HSG WASHER
7	----	A/R	VAC GOOP LUBRICANT
6	0081	4	.093 DIA BALL BEARINGS
5	----	1	O-RING -119 VITON (MED DURO)
4	0236	1	MODIFIED 2-56 SCREW
3	0078	2	SPRING-PLATED NI
2	0077	1	SLIDER ASY
1	0076	1	FLANGED HOUSING ASY

ITEM PART # REQ'D DESCRIPTION

ALL DIMENSIONS AND TOLERANCES APPLY TO FINISHED PART IN INCHES
 ALLOWABLE TOLERANCES UNLESS SPECIFIED OTHERWISE: NONE +/-0.5
 X DECIMAL +/- 0.1 XX DECIMAL +/- 0.02 XXX DECIMAL +/-0.005
 ANGLES +/- 1 DEG SURFACE FINISH 128 microinch RMS

PAVE technology 2751 Thunderhawk Court
Dayton, Ohio 45414-3445
U.S.A.
(937)890-1100
fax (937)890-5185
www.pave technology.co

DESCRIPTION
DISCONNECT-FUEL GAGE SIMULATOR

PART NUMBER 0075	REVISION LEVEL H
PROJECTION	