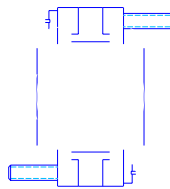
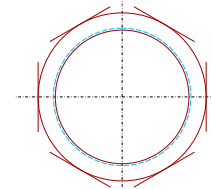


- NOTES:
1. ELECTRICAL TEST AT 630VDC FOR 500 MOHMS MIN CONDUCTOR TO CONDUCTOR AND HOUSING FOR SHORTS.
 2. HELIUM LEAK TEST TO 1 X 10 cc/s
 3. NUT & VACUUM SIDE STRAIN RELIEF SHIPPED LOOSE. CUSTOMER TO INSTALL.

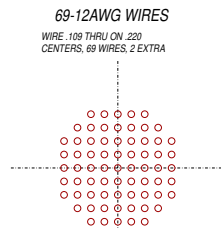


VIEW A-A

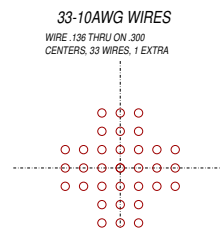


VIEW B-B

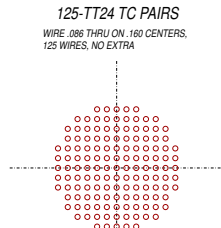
WIRE MARKERS HERE NOT VACUUM COMPATIBLE CUSTOMER TO REMOVE ON INSTALLATION



VS32L-AL-150-67-TE12-480-480

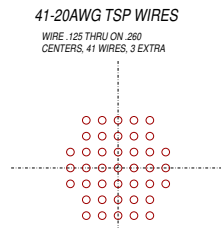


VS32L-AL-150-12-TE10-480-480

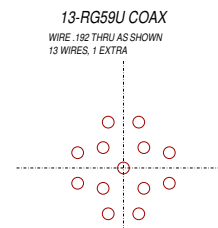


VS32L-AL-150-12SP-TT24-480-480

VIEW C-C



VS32L-AL-150-38TSP-TE20-480-480



VS32L-AL-150-12-RG59U-480-480

PAVE ORDERING PART # →

ITEM #	PART NUMBER	QTY
1	PAVE 0653	1
2	PAVE 0654	1
3	-213 O RING VITON	1
4	PAVESEAL 150 EPOXY	2600g
5	STRAIN RELIEF SC3057-32A	2
6	WIRE AS NOTED	



TITLE OR PAVE ORDER CODE

VS32L-AL-150-(SEE VIEW CC)

PART NUMBER

0681

PROJECTION

