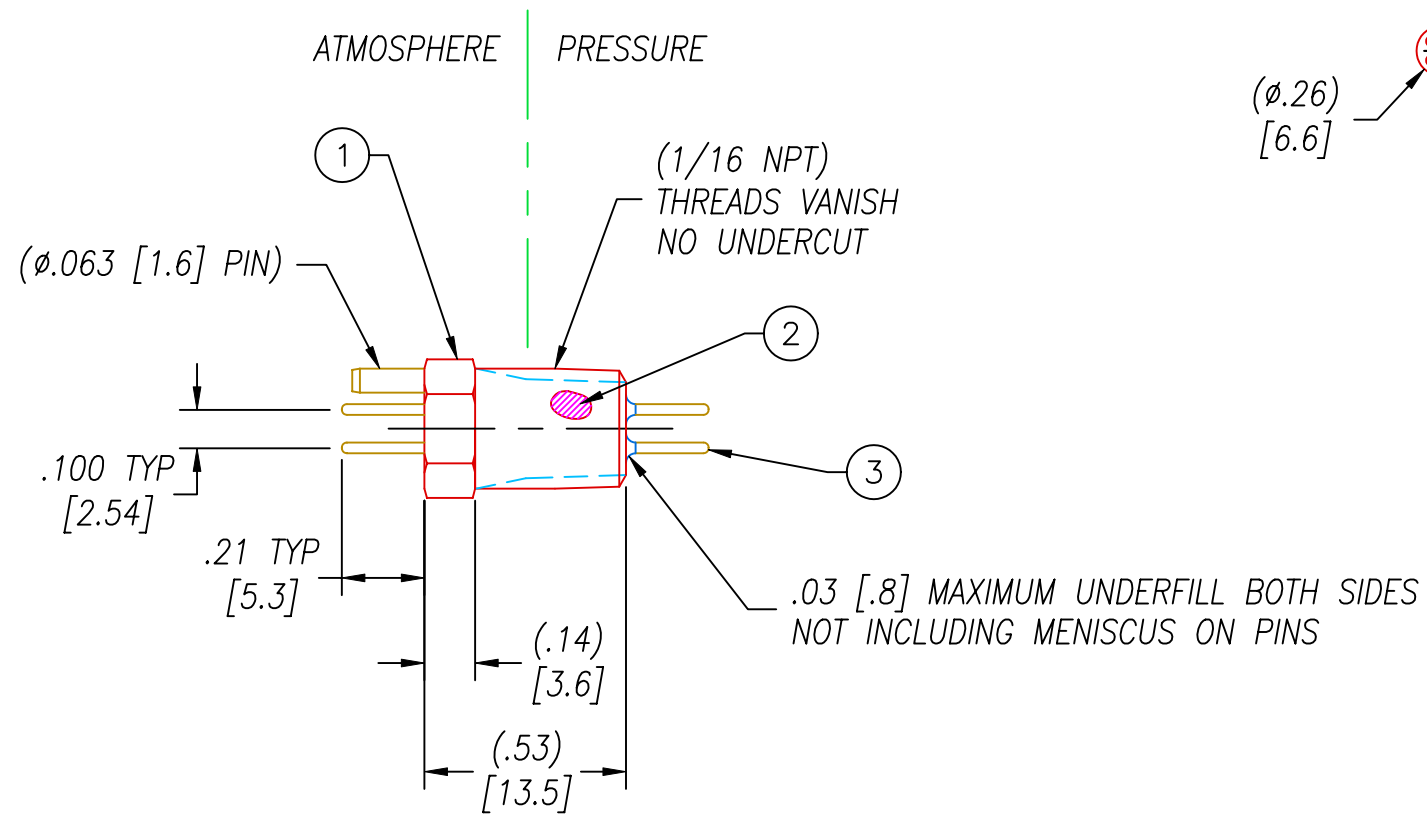
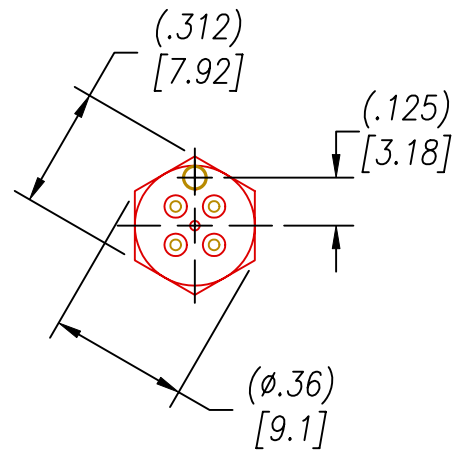
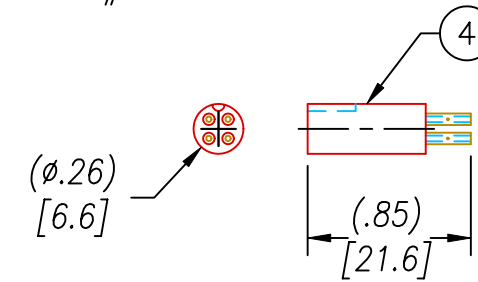


PART#	TEST PRESSURE
1125	10,000 PSI
1125L	80 PSI
1125L-1	600 PSI

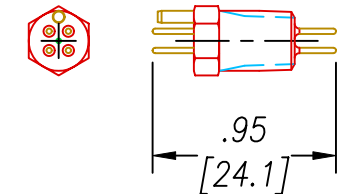


ACTUAL SIZE OF ASSEMBLY

MATING CONNECTOR, 4 SOCKETS
PAVE #1134



PT1-SS 4 PIN HOUSING
ASSEMBLY



NOTES:

1. LEAK TEST: SEE TABLE, NO BUBBLES 1 MINUTE MINIMUM.
2. HYPOT 630 VDC 500 MΩ 0.01 SEC MINIMUM, WIRE TO WIRE & HOUSING USING MATING CONNECTOR (#1134).
3. CONTINUITY TEST 1 OHM MAXIMUM SOCKET TO SOCKET.
4. ALL TESTS ARE PERFORMED AT ROOM TEMPERATURE.
5. ALL PARTS MUST PASS ALL TESTS.
6. DIMENSIONS ARE INCHES [millimeters].

PAVE will meet the assembly and test specifications of the customer as documented on this assembly drawing. Any changes must be approved by PAVE.

4	2	1134	SOCKET PLUG 4x22D ASY
3	4	1133	PINS COPPER .028 DIA GOLD PLATED
2	A/R	PAVESEAL 200	EPOXY BLACK
1	1	1126-SS	HOUSING PT1-SS
ITEM	QTY	PART#	DESCRIPTION

ALL DIMENSIONS AND TOLERANCES APPLY TO FINISHED PART IN INCHES
ALLOWABLE TOLERANCES UNLESS SPECIFIED OTHERWISE: NONE +/-0.5
.X DECIMAL +/- 0.1 .XX DECIMAL +/- 0.02 .XXX DECIMAL +/-0.005
ANGLES +/- 1 DEG SURFACE FINISH 128 microinch RMS

PAVE technology co. logo and contact information:
2751 Thunderhawk Court
Dayton, Ohio 45414-3445
U.S.A.
(937)890-1100
fax (937)890-5165
www.pavetechnologyco.com

DESCRIPTION	PT1-SS-200-4-.028Cu-QD	
PART NUMBER	1125	REVISION LEVEL
		D
PROJECTION		