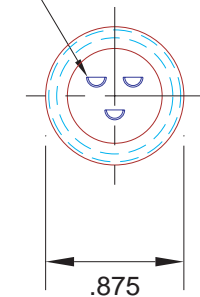


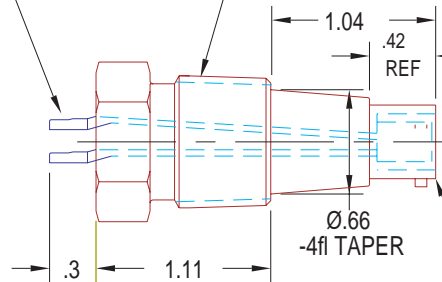
#16 AWG SOLDER CUP
ON A, B & C POSITIONS

CUPS FACE UP
APPROX AS SHOWN



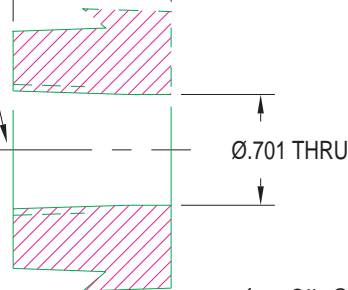
3X

1/2-14 NPT
STAINLESS ST'L



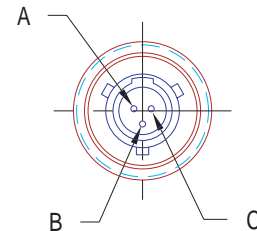
MIL-C-26482 RECEPTACLE
3 #20 SOCKETS (#8 SHELL)

1/2-14 NPT
1.000



OIL @ 60fC
& 30 PSI MAX
PRESSURE
DIRECTION

LEAK TEST PORT
(REF-.39 DEEP THREAD ENGAGEMENT)



NOTES:

1. ORDERING CODE IS PT8-SS-150-3-20-16SC-3112S
2. MINIMIZE TIME OF SOLDERING OPERATION TO LESS THAN 8 SEC FOR EACH CUP.
3. ELECTRICAL TEST @ 630VDC FOR 500 MEGOHMS FOR .01 SEC.
4. ELECTRICAL CONTINUITY- .5 OHM MAX PIN TO SOLDER CUP.
5. LEAK TEST W/N2 @ 80 PSI IN NOTED DIRECTION FOR 1 MINUTE- NO BUBBLES.
5. INCLUDES MATING PLUG- NOT SHOWN SC3116F8-3S (W/ CABLE CLAMP)

ALL DIMENSIONS AND TOLERANCES APPLY TO FINISHED PART IN INCHES
ALLOWABLE TOLERANCES UNLESS SPECIFIED OTHERWISE: NONE +/- .5
.X DECIMAL +/- .1 .XX DECIMAL +/- .02 .XXX DECIMAL +/- .005
ANGLES +/- 1 DEG SURFACE FINISH 128 microinch RMS

PAVE technology co. 2751 Thunderhawk Court
Dayton, Ohio 45414-3445
U.S.A.
(937)890-1100
fax (937)890-5165
www.pavetechnologyco.com

DESCRIPTION

3 #20 PMII W/3 #16SC

PART NUMBER

1211

PROJECTION

