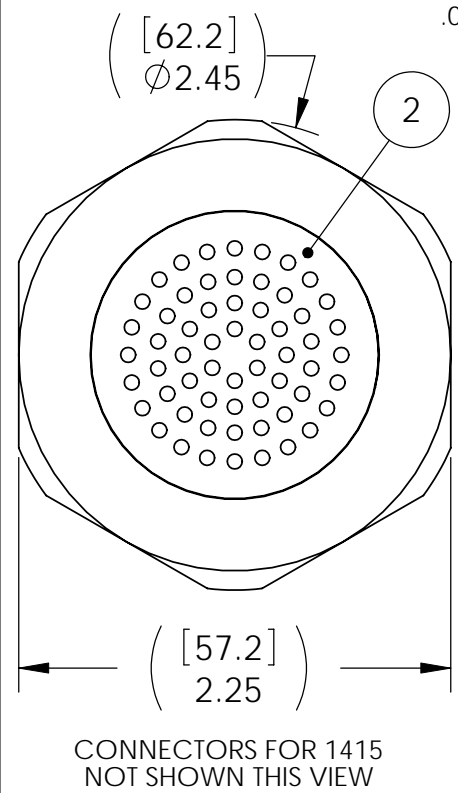
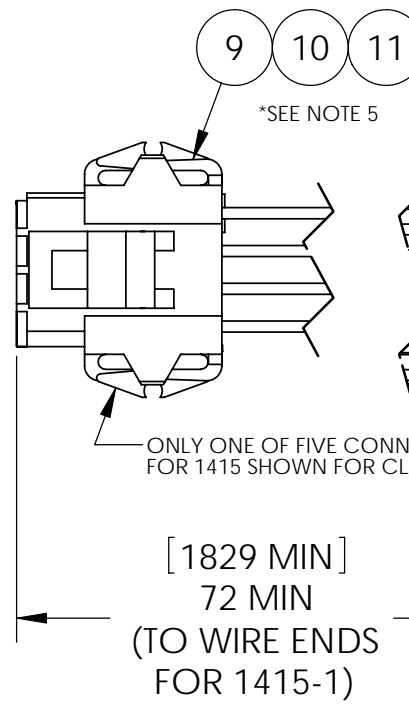


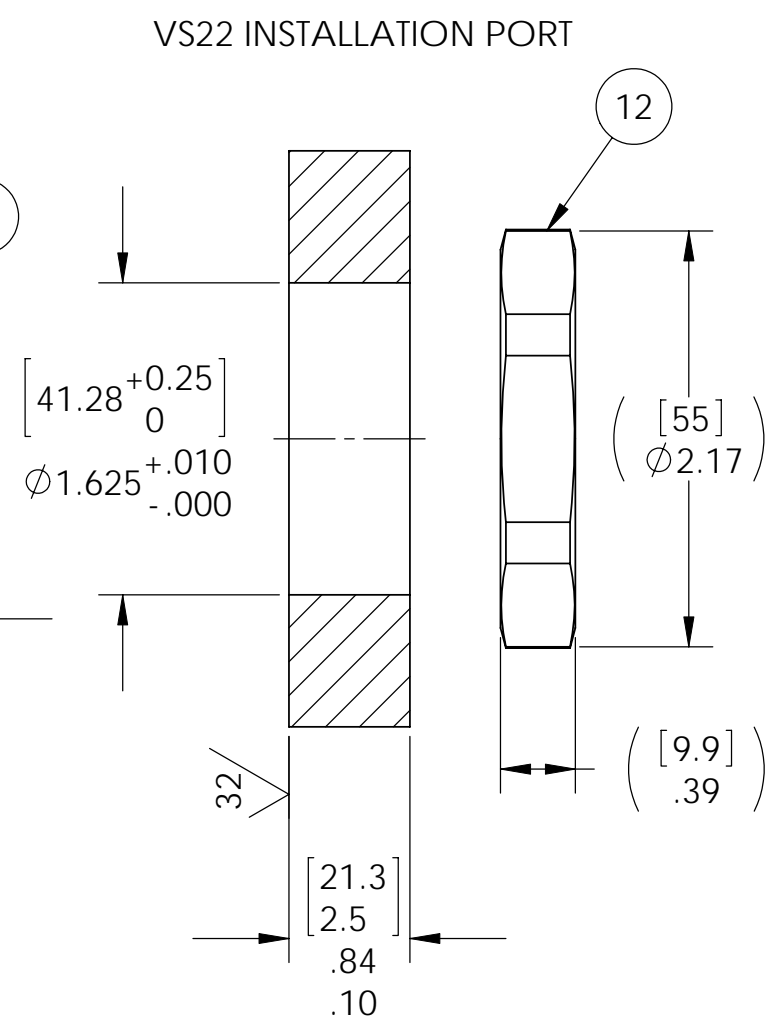
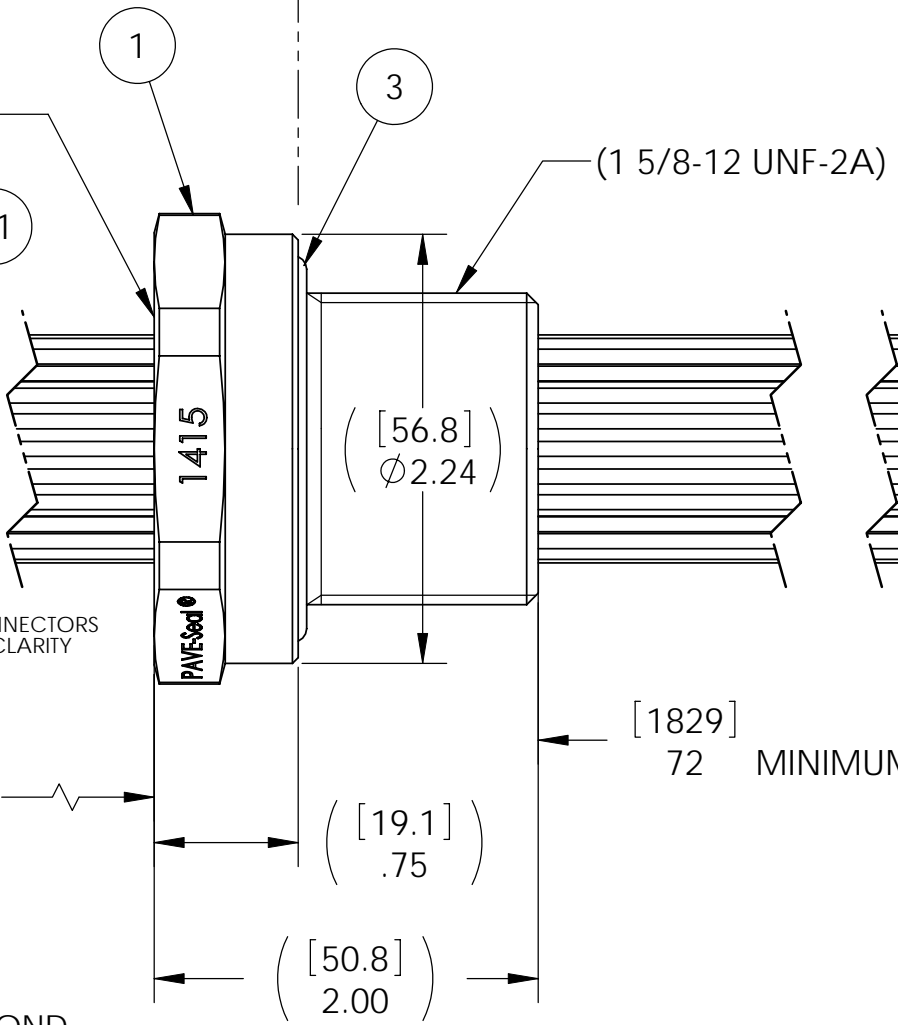
WIRE COLOR	POSITIONS
BLACK	1, 6, 11
GREEN	2, 7, 12
VIOLET	3, 8
WHITE	4, 9
YELLOW	5, 10



.06 [1.5] MAXIMUM OVER/UNDERFILL, SPACING CONTROL NOT REQUIRED BOTH SIDES



ATMOSPHERE | VACUUM



NOTES:

- HE LEAK TEST @ 1ATM 10X10⁻⁷ CC/SEC OR LESS.
- HYPOT 630 VDC 500 MEGOHMS MINIMUM 0.01 SECOND MINIMUM WIRE TO WIRE AND HOUSING.
- FOR 1415 ONLY: CONTINUITY TEST 0.5 Ohms MAXIMUM WIRE END TO MATING CONNECTOR.
- FOR 1415 ITEMS 9 & 11 ARE INCLUDED BUT NOT SHOWN.
- FOR 1415-1 ONLY: ITEMS 9, 10, & 11 ARE NOT INCLUDED.
- ALL TESTS ARE PERFORMED AT ROOM TEMPERATURE.
- ALL PARTS MUST PASS ALL TESTS.
- WIRE POSITIONING IS APPROXIMATE & VARIABLE.
- COSMETIC SURFACE VOIDS SMALLER THAN Ø .035 [0.89] ARE ACCEPTABLE.
- REF-OPERATING TEMPERATURE RANGE -20°C TO 125°C.
- DIMENSIONS ARE INCHES [millimeters].
- ALCOHOL OR FOMBLIN YVAC 3 MAY BE USED TO LUBRICATE O-RINGS FOR VACUUM HELIUM LEAK TESTING.
- PAVE-SEAL CAN BE A BI-DIRECTIONAL HERMETIC SEAL FOR VACUUM AND MOST PRESSURES. FOR PRESSURES ABOVE 150 PSI (10 BAR), CHECK WITH SALES ENGINEERING.

ITEM	QTY	PART NUMBER	DESCRIPTION
12	1	0199	NUT VS22-SS
11	60	AMP #202237-2	*SEE NOTE 5 CONTACT #16 SOC SOLDER TAB
10	5	AMP #207017-1	*SEE NOTE 5 PLUG HOUSING 12 SOCS #14
9	5	AMP #207602-1	*SEE NOTE 5 STRAIN RELIEF 12 POSITION
8	10	EE20 UL1180 YLW	WIRE 20EE UL1180 7/#28
7	10	EE20 UL1180 WHT	WIRE 20EE UL1180 7/#28
6	10	EE20 UL1180 VIO	WIRE 20EE UL1180 7/#28
5	15	EE20 UL1180 GRN	WIRE 20EE UL1180 7/#28
4	15	EE20 UL1180 BLK	WIRE 20EE UL1180 7/#28
3	1	-224 VITON LT	O-RING -224 VITON 75 LT
2	A/R	PAVE-Seal 150	EPOXY BLACK
1	1	0189/304SS	HOUSING VS22-SS

PAVE technology co.
 2751 Thunderhawk Court
 Dayton, OH 45414-3445
 U.S.A.
 tel (937) 890-1100
 fax (937) 8905165
 www.pavetechnologyco.com

DESCRIPTION	VS22-SS-150-60-TEE20-72-72	
PART NUMBER *SEE NOTE 5	MATERIAL	NOTED
1415*	REVISION LEVEL	B
	PROJECTION	

ALL DIMENSIONS AND TOLERANCES APPLY TO FINISHED PART IN INCHES.
 ALLOWABLE TOLERANCES UNLESS SPECIFIED OTHERWISE: NONE ±0.5
 X.X DECIMAL ±0.1 X.XX DECIMAL ±0.02 X.XXX DECIMAL ±0.005
 ANGLES ±1 DEGREE SURFACE FINISH 128 microinch RMS