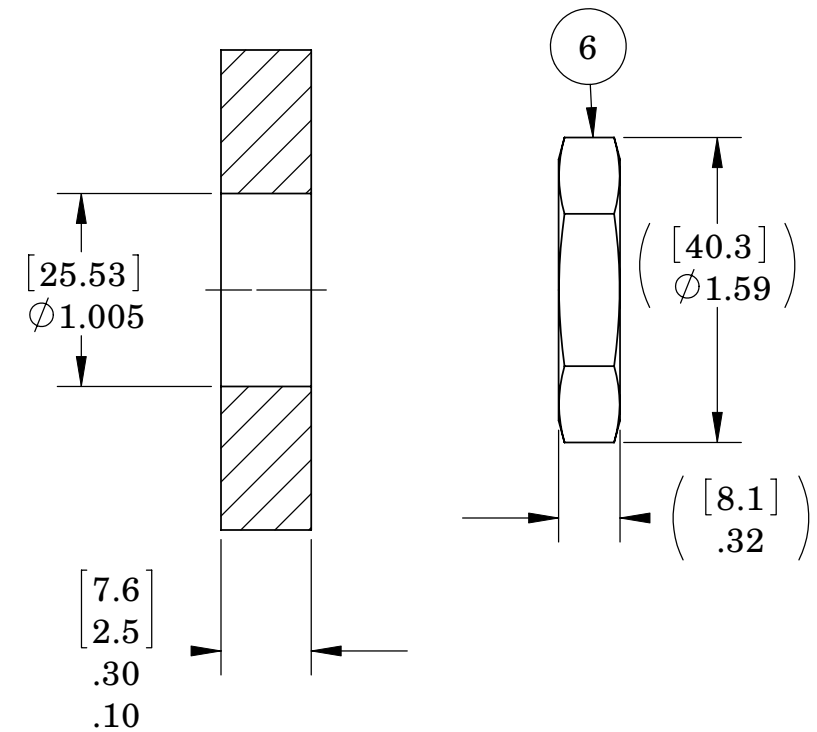


VS15 INSTALLATION PORT



NOTES:

1. HELIUM LEAK TEST VACUUM 10×10^{-8} CC/SEC OR LESS.
2. HYPO T630 VDC 500 MEG OHMS MINIMUM 0.01 SECOND MINIMUM ROD AND HOUSING.
3. ALL TESTS ARE PERFORMED AT ROOM TEMPERATURE.
4. ALL PARTS MUST PASS ALL TESTS.
5. COSMETIC SURFACE VOIDS SMALLER THAN $\phi 0.035$ [.89] ARE ACCEPTABLE.
6. REF-OPERATING TEMPERATURE -25°C TO 150°C .
7. PAVE-SEAL CAN BE A BIDIRECTIONAL HERMETIC SEAL FOR VACUUM AND MOST PRESSURES. FOR PRESSURES ABOVE 150 PSI (10 BAR), CHECK WITH SALES ENGINEERING.
8. DIMENSIONS ARE INCHES [millimeters].
9. ALCOHOL OR FORMBLIN VAC 3 MAY BE USED TO LUBE O-RINGS FOR VACUUM HELIUM LEAK TESTING.

7	A/R	PAVE-Seal 200HV	EPOXY BLUE
6	1	0183	NUT VS15-SS
5	1	-215 VITON	O-RING -215 VITON 75
4	1	0159	HOUSING VS15-SS
3	4	BRASS WASH 3/8"	WASHER 3/8" BRASS
2	4	BRASS NUT 3/8"	NUTS 3/8-16 BRASS
1	1	0049	ROD .375" COPPER HIGH CURRENT
ITEM	QTY	PARTNUMBER	DESCRIPTION

PAVE technology co.

2751 Thunderhawk Court
Dayton, OH 45414-3445
U.S.A.
tel (937) 890-1100
fax (937) 8905165
www.pave technology co.com

DESCRIPTION
VS15-SS-200HV-.38CU-1-1

PART NUMBER
1444

MATERIAL
NOTED

REVISION LEVEL
A

PROJECTION
☉ ◁

ALL DIMENSIONS AND TOLERANCES APPLY TO FINISHED PART IN INCHES.
ALLOWABLE TOLERANCES UNLESS SPECIFIED OTHERWISE: NONE ± 0.5
X.X DECIMAL ± 0.1 X.XX DECIMAL ± 0.02 X.XXX DECIMAL ± 0.005
ANGLES ± 1 DEGREE SURFACE FINISH 128 microinch RMS