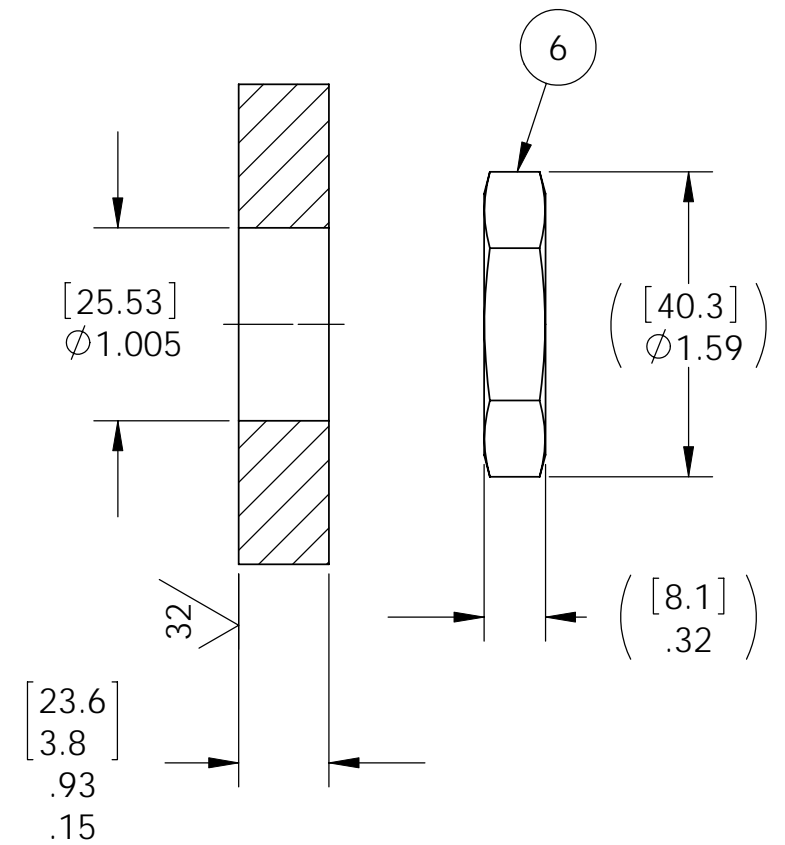


VS15L INSTALLATION PORT



NOTES:

1. A) FOR 1564: LEAK TEST 1500 PSI NITROGEN THREAD SIDE 30 SECONDS, NO BUBBLES
B) FOR 1564-1: HE LEAK TEST VACUUM 10X10⁻⁸ CC/SEC OR LESS.
2. HYPOT 630 VDC 500 MEGOHMS MINIMUM 0.01 SECOND MINIMUM PIN TO PIN AND HOUSING WITH MATING CONNECTORS.
3. CONTINUITY TEST <0.5 OHMS PIN TO SOCKET.
4. ALL TESTS ARE PERFORMED AT ROOM TEMPERATURE.
5. ALL PARTS MUST PASS ALL TESTS.
6. VOIDS LARGER THAN $\phi 0.035$ [.89] ARE NOT ACCEPTABLE.
7. REF-OPERATING TEMPERATURE -20°C TO 120°C.
8. DIMENSIONS ARE INCHES [millimeters].
9. PAVE-SEAL CAN BE A BI-DIRECTIONAL HERMETIC SEAL FOR VACUUM AND MOST PRESSURES. FOR PRESSURES ABOVE 150 PSI (10 BAR), CHECK WITH SALES ENGINEERING.
10. ITEMS 7, 8 & 9 SUPPLIED, NOT SHOWN.

9	2	M85049/52-1-10N	STRAIN RELIEF 13PIN #22
8	1	MS3476L10-6S	PLUG 6#20 CRIMP SERIES II
7	1	MS3476L10-6P	PLUG 6#20 CRIMP
6	1	0183	NUT VS15-SS
5	1	SC3112E10-6P	RCPT 6 #20 ELECTROLESS NICKEL
4	1	SC3112E10-6S	RCPT 6 #20 ELECTROLESS NICKEL
3	A/R	PAVE-Seal 150	EPOXY BLACK
2	1	-215 VITON	O-RING -215 VITON 75
1	1	0161	HOUSING VS15L-SS
ITEM	QTY	PART NUMBER	DESCRIPTION

PAVE technology co.
 2751 Thunderhawk Court
 Dayton, OH 45414-3445
 U.S.A.
 tel (937) 890-1100
 fax (937) 8905165
 www.pavetechnologyco.com

DESCRIPTION
 VS15L-SS-150-6-20-3112SP

PART NUMBER
1564

MATERIAL NOTED

REVISION LEVEL
 A

PROJECTION

ALL DIMENSIONS AND TOLERANCES APPLY TO FINISHED PART IN INCHES.
 ALLOWABLE TOLERANCES UNLESS SPECIFIED OTHERWISE: NONE ±0.5
 X.X DECIMAL ±0.1 X.XX DECIMAL ±0.02 X.XXX DECIMAL ±0.005
 ANGLES ±1 DEGREE SURFACE FINISH 128 microinch RMS