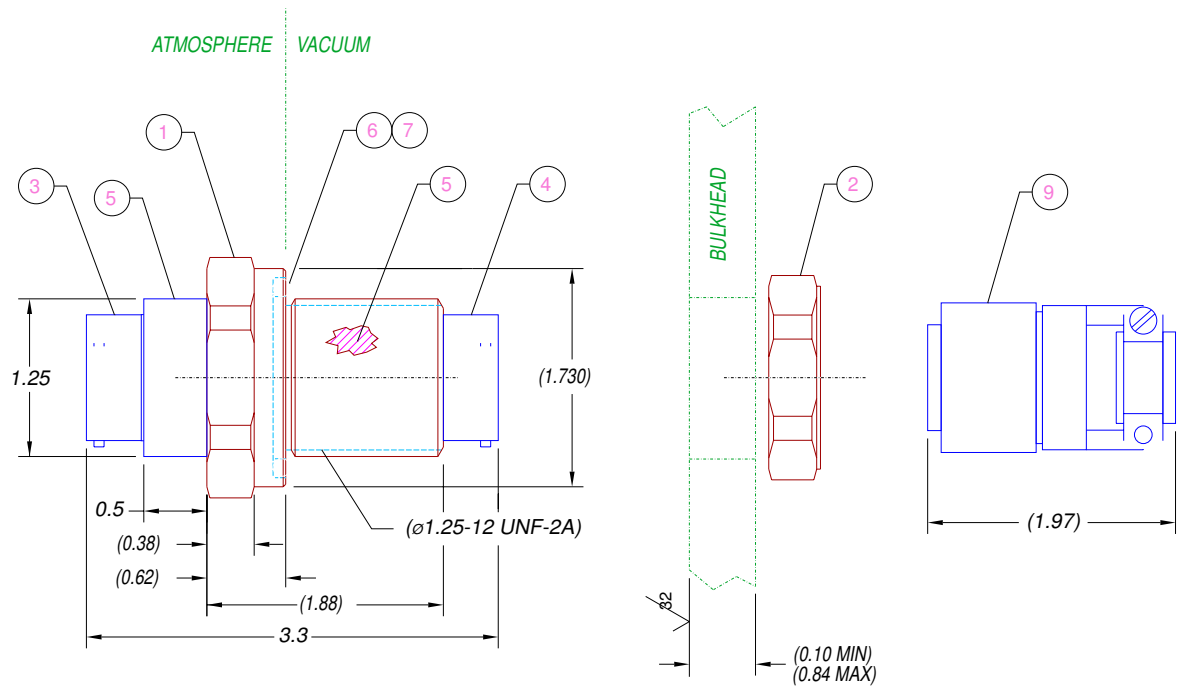


- NOTES:**
1. HE LEAK TEST @1 ATM. 10^{-7} CC/S.
 2. HYPOT 630 VDC 500 MW 0.01 SEC MINIMUM, PIN TO PIN & HOUSING
 3. ALL TESTS ARE PERFORMED AT ROOM TEMPERATURE.
 4. PERCENTAGE OF PARTS TESTED WILL BE 100% (MAY BE

A LESSER PERCENTAGE FOR LARGE PRODUCTION QUANTITIES, UNLESS OTHERWISE NOTED OR REQUIRED).



9	1	SC3126F16-8P	PLUG 8 #16 PINS
8	1	SC3126F16-8S	PLUG 8 #16 SOCKETS
7	A/R	SUPER-O-LUBE	LUBRICANT O-RING SILICONE BASED
6	1	-219 VITON	O-RING -219 VITON 75
5	A/R	PAVE-Seal 150	EPOXY BLACK
4	1	SC3112E16-8S	RCPT 3112 8 #16 SOCKETS
3	1	SC3112E16-8P	RCPT 3112 8 #16 PINS
2	1	1014 VS18 NUT	NUT VS18-SS
1	1	0660 VS18-SS	HOUSING VS18-SS
ITEM	QTY	PART#	DESCRIPTION

ALL DIMENSIONS AND TOLERANCES APPLY TO FINISHED PART IN INCHES
 ALLOWABLE TOLERANCES UNLESS SPECIFIED OTHERWISE: NONE +/-0.5
 .X DECIMAL +/- 0.1 .XX DECIMAL +/- 0.02 .XXX DECIMAL +/-0.005
 ANGLES +/- 1 DEG SURFACE FINISH 128 microinch RMS



DESCRIPTION	VS18-SS-150-8-16-3112PS	
PART NUMBER	1715	
REVISION LEVEL	A	
PROJECTION		