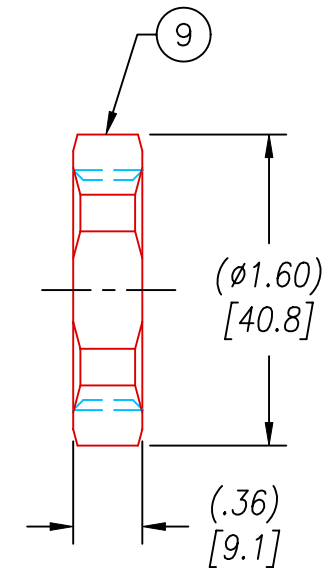
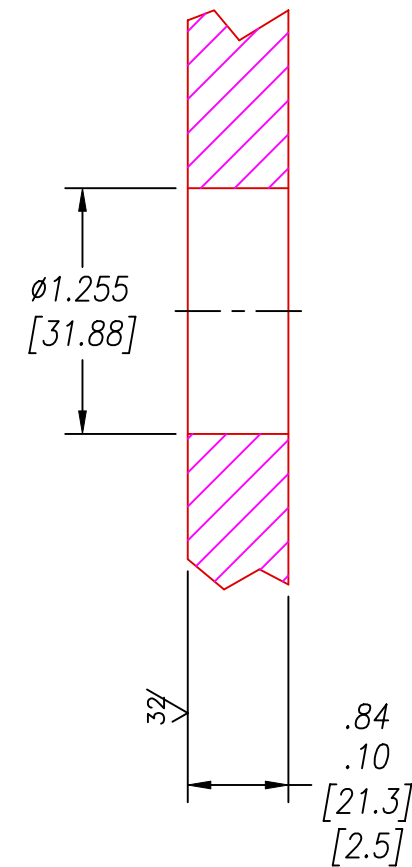


VS18 INSTALLATION PORT



NOTES:

1. HE LEAK TEST @1 ATM. 10×10^{-9} CC/S OR LESS.
2. HYPOT 630 VDC 500 MΩ 0.01 SEC MINIMUM, PIN TO PIN & HOUSING WITH MATING CONNECTORS.
3. CONTINUITY TEST < 1.0 Ω WITH MATING CONNECTORS.
4. ALL TESTS ARE PERFORMED AT ROOM TEMPERATURE.
5. ALL PARTS MUST PASS ALL TESTS.
6. ALTERNATE CLOCKING (W OR X) IS INDICATED BY APPENDING THE APPROPRIATE LETTER TO THE PART NUMBER, PAVE ORDER CODE & ITEMS 3 THRU 6.
7. ADDING "NP" TO THE PART NUMBER & PAVE ORDER CODE INDICATES THAT ITEMS 5, 6, & 7 NOT INCLUDED.
8. VOIDS LARGER THAN $\phi 0.035$ [0.89] ARE NOT ACCEPTABLE.
9. OPERATING TEMPERATURE RANGE -20°C TO 125°C.
10. DIMENSIONS ARE INCHES [millimeters].
11. PAVE-SEAL CAN BE A BI-DIRECTIONAL HERMETIC SEAL FOR VACUUM AND MOST PRESSURES. FOR PRESSURES ABOVE 150 PSI (10 BAR), CHECK WITH SALES ENGINEERING.

9	1	1014		NUT VS18 SS
8	1	-219 VITON		O-RING -219 VITON 75
7	1	M85049/52-1-12N	*SEE NOTE 7	STRAIN RELIEF FOR MS3476L12-10P & S
6	1	MS3476L12-10S*	*SEE NOTES 6 & 7	PLUG 10#20 SOC CRIMP SERIES II
5	1	SC3126F12-10P*	*SEE NOTES 6 & 7	PLUG 10 #20 Electroless Nickel
4	1	AE771L1210S*460	*SEE NOTE 6	RCPT 10#20 EPOXY INSERT SOCKET
3	1	SC3112E12-10P*	*SEE NOTE 6	RCPT 10#20 PIN ELECTROLESS NICKEL
2	A/R	PAVE-Seal 150		EPOXY BLACK
1	1	0660		HOUSING VS18-SS
ITEM	QTY	PART#		DESCRIPTION

ALL DIMENSIONS AND TOLERANCES APPLY TO FINISHED PART IN INCHES
 ALLOWABLE TOLERANCES UNLESS SPECIFIED OTHERWISE: NONE +/-0.5
 .X DECIMAL +/- 0.1 .XX DECIMAL +/- 0.02 .XXX DECIMAL +/-0.005
 ANGLES +/- 1 DEG SURFACE FINISH 128 microinch RMS



DESCRIPTION	PAVE-Mate@ I Connectors	*SEE NOTE 6
	VS18-SS-150-10-20-3112PS*	
PART NUMBER	*SEE NOTE 6	REVISION LEVEL
1864*		B
	PROJECTION	