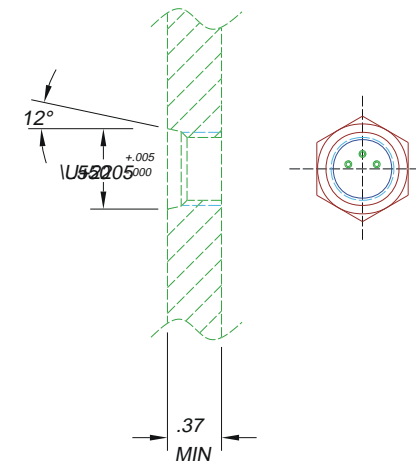


LEAK TEST PORT



ADD'L DIMS PER SAEJ1926

NOTES:

1. LEAK TEST: 10,000 PSI, NO BUBBLES 30 SECS MINIMUM.
2. HYPOT 630 VDC 500 M .01 SEC MINIMUM, WIRE TO WIRE & HOUSING.
3. MAX SOLDER TIME 3 SECONDS W/ 600°F IRON & 10 SEC DWELL BETWEEN EACH SOLDERING.
4. ALL TESTS ARE PERFORMED AT ROOM TEMPERATURE.
5. ALL SPECIFICATIONS AND TESTS SUPERSEDE PAVE CATALOG SPECIFICATIONS.
6. PLUG DISCONNECT FORCE: ~6 lbs.

8	1	124-3F-60	PLUG SUBMERSIBLE SERIES 124 3 #24 SOCS
7	3	1485	SOLDER CUP
6	3	M39029/58-360	CONTACT #22 PIN
5	A/R	EN-1556 BLACK	URETHANE BLACK
4	A/R	PAVE-Seal 150	EPOXY BLACK
3	A/R	PARKER O-LUBE	LUBRICANT O-RING BARIUM
2	1	-905 BUNA	O-RING -905 BUNA 75
1	1	2003	HOUSING SO8M-SS HI-P THRD

ITEM	QTY	PART#	DESCRIPTION
------	-----	-------	-------------

ALL DIMENSIONS AND TOLERANCES APPLY TO FINISHED PART IN INCHES  
 ALLOWABLE TOLERANCES UNLESS SPECIFIED OTHERWISE: NONE +/- .5  
 .X DECIMAL +/- .1 .XX DECIMAL +/- .02 .XXX DECIMAL +/- .005  
 ANGLES +/- 1 DEG SURFACE FINISH 128 microinch RMS

2751 Thunderhawk Court  
 Dayton, Ohio 45414-3445  
 U.S.A.  
 (937)890-1100  
 fax (937)890-5165  
 www.pavetechnologyco.com

DESCRIPTION PAVE-Mate® II Connectors  
**SO8M-SS-150-3-24-QD-SC**

PART NUMBER **1922** PROJECTION