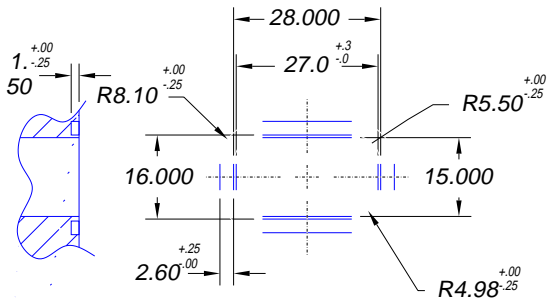


THROUGH HOLE & O-RING GROOVE



NOTES:

1. HE LEAK TEST @1 ATM. 10^{-6} CC/S W/ 2X24 O-RING.
2. HYPOT 630 VDC 500 MW .01 SEC MINIMUM, WIRE TO WIRE & HOUSING. DO NOT INCLUDE FLEX CABLE.
3. ALL TESTS ARE PERFORMED AT ROOM TEMPERATURE.

12	A/R	PAVE-Seal 150	EPOXY BLACK
11	1@400	ET20 RED	WIRE 20ET MIL-W-16878/6 .006 7/#28
10	1@400	ET20 GREEN	WIRE 20ET MIL-W-16878/6 .006 7/#28
9	1@400	ET20 YELLOW	WIRE 20ET MIL-W-16878/6 .006 7/#28
8	1@400	ET20 BLUE	WIRE 20ET MIL-W-16878/6 .006 7/#28
7	1@400	ET24 BLUE	WIRE 24ET MIL-W-16878/6 .006 7/#32
6	1@400	ET24 YELLOW	WIRE 24ET MIL-W-16878/6 .006 7/#32
5	1@400	ET24 GREEN	WIRE 24ET MIL-W-16878/6 .006 7/#32
4	1@400	ET24 RED	WIRE 24ET MIL-W-16878/6 .006 7/#32
3	1@400	ET24 BROWN	WIRE 24ET MIL-W-16878/6 .006 7/#32
2	1	1934	HOUSING BD-AL
1	1	SMFLX-1	CABLE FLEX PLATINE BDD SMFLX-1
ITEM	QTY	PART#	DESCRIPTION

ALL DIMENSIONS AND TOLERANCES APPLY TO FINISHED PART IN MM
 ALLOWABLE TOLERANCES UNLESS SPECIFIED OTHERWISE: NONE +/-13
 .X DECIMAL +/- .25 .XX DECIMAL +/- .50 .XXX DECIMAL +/- .100
 ANGLES +/- 1 DEG SURFACE FINISH 3.2 micrometers RMS



DESCRIPTION PAVE-Flex® Cable Harnesses
BD-AL-150-4/5/1-ET20/24/FLEX-12-3

PART NUMBER

1945

PROJECTION

