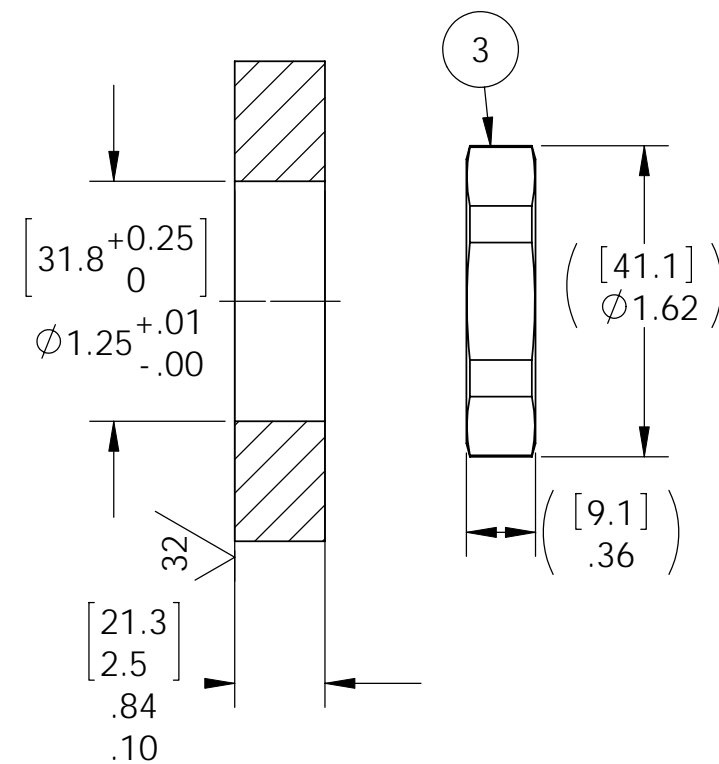


VS18 INSTALLATION PORT



PART #	DESCRIPTION	X	Y
2009	VS18-SS-200-5P/8P-KT20/RT20-180-180	180 [4572]	180 [4572]
2009-1	VS18-SS-200-5P/8P-KT20/RT20-120-40	120 [3048]	40 [1016]

NOTES:

1. HE LEAK TEST @ 1ATM. 10X10⁻⁸ CC/SEC OR LESS.
2. HYPOT 630 VDC 500 MEGOHMS MINIMUM 0.01 SECOND MINIMUM WIRE TO WIRE AND HOUSING.
3. ALL TESTS ARE PERFORMED AT ROOM TEMPERATURE.
4. ALL PARTS MUST PASS ALL TESTS.
5. WIRE POSITIONING IS APPROXIMATE & VARIABLE.
6. COSMETIC SURFACE VOIDS SMALLER THAN $\phi 0.035$ [.89] ARE ACCEPTABLE.
7. REF-OPERATING TEMPERATURE -20°C TO 150°C.
8. PAVE-SEAL CAN BE A BI-DIRECTIONAL HERMETIC SEAL FOR VACUUM AND MOST PRESSURES. FOR PRESSURES ABOVE 150 PSI (10 BAR), CHECK WITH SALES ENGINEERING.
9. DIMENSIONS ARE INCHES [millimeters].
10. ALCOHOL OR FOMBLIN YVAC 3 MAY BE USED TO LUBE O-RINGS FOR VACUUM HELIUM LEAK TESTING.

6	8	RXT20, RX/SX	CABLE T/C 20 TYPE RX TEFLON PFA
5	5	KT20	CABLE T/C TYPE K 20AWG TEFLON
4	A/R	PAVE-Seal 200	EPOXY BLACK
3	1	1014	NUT VS18-SS
2	1	-219 VITON	O-RING -219 VITON 75
1	1	0660	HOUSING VS18-SS
ITEM	QTY	PART NUMBER	DESCRIPTION

PAVE technology co.

2751 Thunderhawk Court
Dayton, OH 45414-3445
U.S.A.
tel (937) 890-1100
fax (937) 8905165
www.pavetechnologyco.com

DESCRIPTION
VS18-SS-200-5P/8P-KT20/RT20-*-*

PART NUMBER
2009*

MATERIAL NOTED

REVISION LEVEL
A

PROJECTION

ALL DIMENSIONS AND TOLERANCES APPLY TO FINISHED PART IN INCHES.
ALLOWABLE TOLERANCES UNLESS SPECIFIED OTHERWISE: NONE ± 0.5
X.X DECIMAL ± 0.1 X.XX DECIMAL ± 0.02 X.XXX DECIMAL ± 0.005
ANGLES ± 1 DEGREE SURFACE FINISH 128 microinch RMS