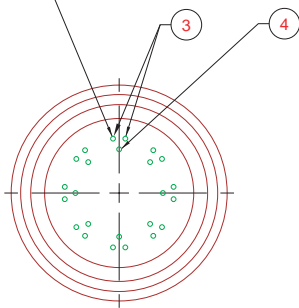
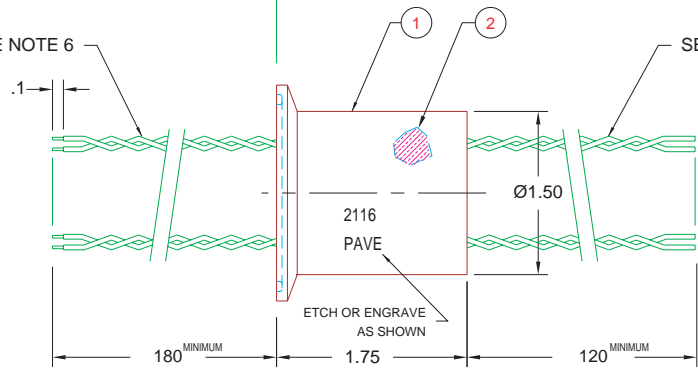


8 GROUPS OF 3 WIRES
 SPACED APPROX AS SHOWN
 & TWISTED TOGETHER 1-3 TWISTS/INCH
 EACH GROUP MADE UP OF:
 2x ITEM 3
 1x ITEM 4



VACUUM PRESSURE ATMOSPHERE SEE NOTE 1
 ATMOSPHERE SEE NOTE 2

SEE NOTE 6



SEE NOTE 6

- NOTES:
- HE LEAK TEST @ 1 ATM. 10^{-7} CC/S.
 - PRESSURE TEST @ 40 PSI N2 FOR 12 MINUTES
NO BUBBLING.
 - HYPOT 630 VDC 500 MW .01 SEC MINIMUM, WIRE TO WIRE & HOUSING.
 - ALL TESTS ARE PERFORMED AT ROOM TEMPERATURE.
 - LUBRICATE GASKET (CUSTOMER SUPPLIED) WITH SUPER O-RING LUBRICANT FOR LEAK TESTING ON NOTES 1 & 2. DO NOT SHIP GASKET OR LTP.
 - MARK EACH GROUP WITH UNIQUE WIRE MARKERS BOTH ENDS. (E.G., A,B,C, ETC OR 1,2,3, ETC)
 - WIPE OFF EXCESS LUBRICANT & COVER VACUUM SIDE WITH PLASTISOL BOOT CUT WITH Ø1.5 OPENING.

4	8x28FT	TE24 BLACK	WIRE 24E MIL-W-16878/4 7/#32
3	16x28FT	TE24 RED	WIRE 24E MIL-W-16878/4 7/#32
2	A/R	PAVE-Seal 150	EPOXY BLACK
1	1	BS14AM-1.5-316L	HOUSING BPE1.5-SS TRI-WELD
ITEM	QTY	PART#	DESCRIPTION

PAVE technology co.

2751 Thunderhawk Court
 Dayton, Ohio 45414-3445
 U.S.A.
 (937)890-1100
 fax (937)890-5165
 www.paveedtechnology.com

DESCRIPTION PAVE-Seal/E Cable Harnesses
 BPE1.5-SS-150-24-TE22-180-120

ALL DIMENSIONS AND TOLERANCES APPLY TO FINISHED PART IN INCHES
 ALLOWABLE TOLERANCES UNLESS SPECIFIED OTHERWISE: NONE +/- .5
 .X DECIMAL +/- .1 .XX DECIMAL +/- .02 .XXX DECIMAL +/- .005
 ANGLES +/- 1 DEG SURFACE FINISH 128 microinch RMS

PART NUMBER
2116

PROJECTION