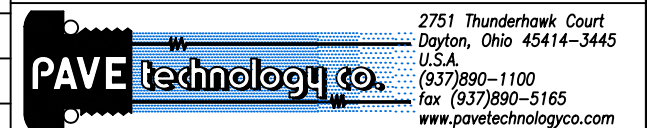


NOTES:

1. HE LEAK TEST @1 ATM.  $10 \times 10^{-7}$  CC/S OR LESS.
2. HYPOT 630 VDC 500 MEGOHMS 0.01 SEC MINIMUM, PINS TO SOCKETS & THREADS W/MATING PLUGS.
3. CONTINUITY TEST PIN TO SOCKET <0.5  $\Omega$ .
4. ALL TESTS ARE PERFORMED AT ROOM TEMPERATURE.
5. ALL PARTS MUST PASS ALL TESTS.
6. NO VOIDS ARE ACCEPTABLE ON O-RING SEALING SURFACES, VOIDS SMALLER THAN  $\phi 0.035$  [.89] ARE ACCEPTABLE ON ALL OTHER SURFACES.
7. THERMAL CYCLE PRIOR TO LEAK TESTING,  $-40^{\circ}\text{C}$  TO  $125^{\circ}\text{C}$  3 CYCLES, 2 HR HOLD.
8. REF-OPERATING TEMPERATURE  $-20^{\circ}\text{C}$  TO  $125^{\circ}\text{C}$ .
9. TORQUE LABEL -PAVE (2167) Dayton, OH USA TIGHTEN TO 27.12 Nm MAXIMUM
10. DIMENSIONS ARE INCHES [millimeters].

9	1	0183	NUT VS15-SS
8	1	-215 VITON	O-RING -215 VITON 75
7	1	0181	INSERT VS15L-SS
6	2	M85049/52-1-12N	STRAIN RELIEF FOR MS3476L12
5	1	MS3476L12-3S	PLUG 3#16 ELECTROLESS NICKEL PLATING SOC
4	1	776L12-3P-460	PLUG 3#16 EPOXY INSERT PIN
3	1	771L12-3S-460	RCPT 3#16 EPOXY INSERT SOC
2	1	SC3112E12-3P	RCPT 3#16 ELECTROLESS NICKEL PLATING PIN
1	A/R	PAVE-Seal 150	EPOXY BLACK
ITEM	QTY	PART#	DESCRIPTION

ALL DIMENSIONS AND TOLERANCES APPLY TO FINISHED PART IN INCHES  
 ALLOWABLE TOLERANCES UNLESS SPECIFIED OTHERWISE: NONE +/-0.5  
 .X DECIMAL +/- 0.1 .XX DECIMAL +/- 0.02 .XXX DECIMAL +/-0.005  
 ANGLES +/- 1 DEG SURFACE FINISH 128 microinch RMS



DESCRIPTION PAVE-Mate® I Connectors  
 VS15L-E-150-3-16-3112PS

PART NUMBER  
 2167

REVISION LEVEL B  
 PROJECTION