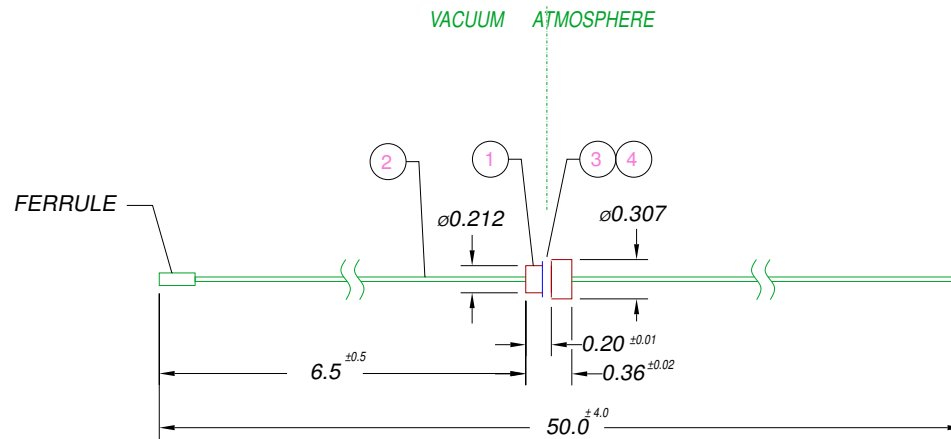
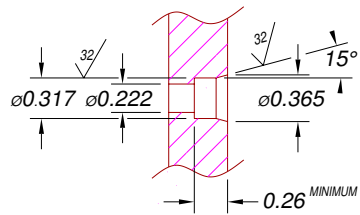


LEAK TEST PORT



NOTES:

1. HE LEAK TEST @1 ATM. 10^{-7} CC/S.
2. ALL TESTS ARE PERFORMED AT ROOM TEMPERATURE.
3. OPTICAL CONTINUITY TEST (VISUAL).
4. ITEM 2 MAY BE SUPPLIED WITHOUT FERRULE.

4	A/R	SUPER O-LUBE	LUBRICANT O-RING SILICONE-BASED
3	1	-008 E0667	O-RING -008 ETHYLENE PROPYLENE 70
2	1	400501	FIBER OPTICAL 900um 4/125 TERMINATED W/ FERRULE
1	A/R	PAVE-Seal 150	EPOXY BLACK
ITEM	QTY	PART#	DESCRIPTION

ALL DIMENSIONS AND TOLERANCES APPLY TO FINISHED PART IN INCHES
 ALLOWABLE TOLERANCES UNLESS SPECIFIED OTHERWISE: NONE +/- .5
 .X DECIMAL +/- .1 .XX DECIMAL +/- .02 .XXX DECIMAL +/- .005
 ANGLES +/- 1 DEG SURFACE FINISH 128 microinch RMS

PAVE Technology 2751 Thunderhawk Court
 Dayton, Ohio 45414-3445
 U.S.A.
 (937)890-1100
 fax (937)890-5165
 www.pavetechnologyco.com

DESCRIPTION PAVE-Opti SealFromans.shx; Cable Harnesses
SP4.9-E-150-1-SMFO-6.5-39

PART NUMBER **2176** PROJECTION