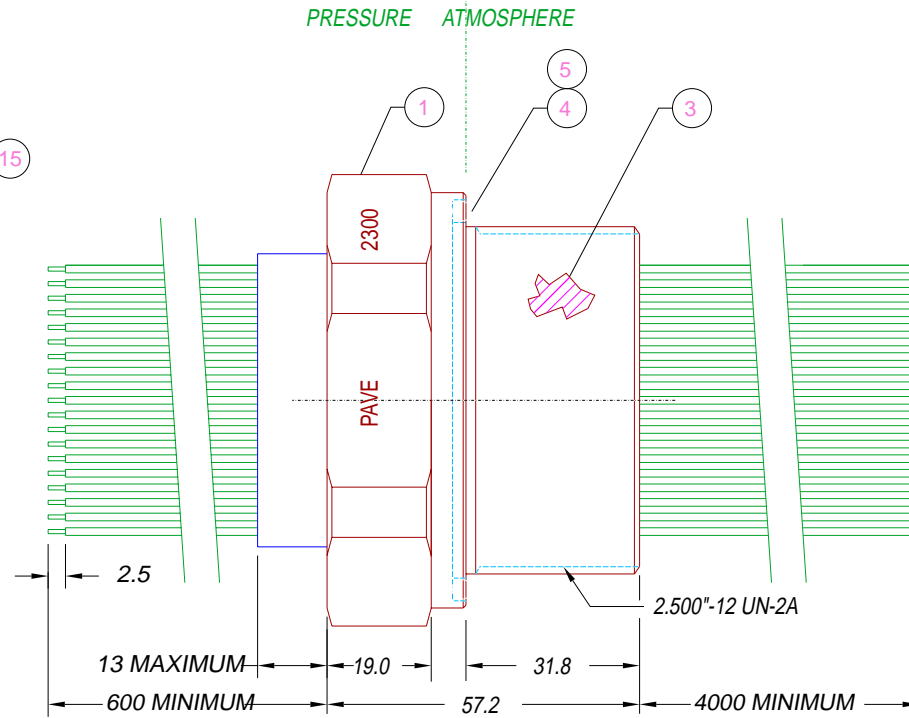
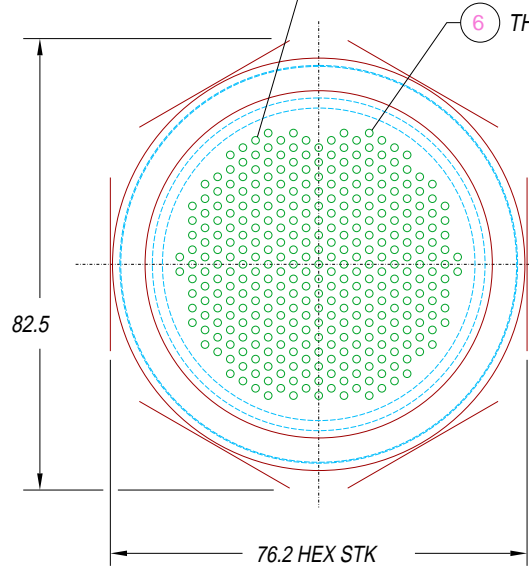
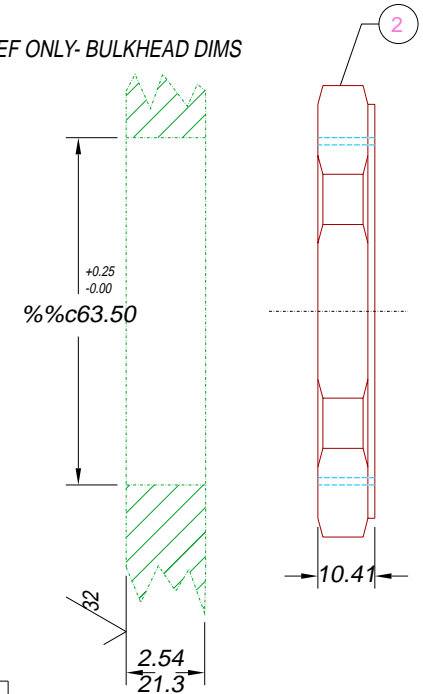


METRIC DRAWING

GROUPS OF 34 EACH
COLOR TOGETHER



REF ONLY- BULKHEAD DIMS



15	34@4757	ET22 BLACK	WIRE 22ET MIL-W-16878/6 7/#30
14	34@4757	ET22 BLUE	WIRE 22ET MIL-W-16878/6 7/#30
13	34@4757	ET22 GRAY	WIRE 22ET MIL-W-16878/6 7/#30
12	34@4757	ET22 GREEN	WIRE 22ET MIL-W-16878/6 7/#30
11	34@4757	ET22 ORANGE	WIRE 22ET MIL-W-16878/6 7/#30
10	34@4757	ET22 RED	WIRE 22ET MIL-W-16878/6 7/#30
9	34@4757	ET22 YELLOW	WIRE 22ET MIL-W-16878/6 7/#30
8	34@4757	ET22 VIOLET	WIRE 22ET MIL-W-16878/6 7/#30
7	34@4757	ET22 BROWN	WIRE 22ET MIL-W-16878/6 7/#30
6	34@4757	ET22 WHITE	WIRE 22ET MIL-W-16878/6 7/#30
5	A/R	SUPER O-LUBE	LUBRICANT O-RING SILICONE BASED
4	1	-231 VITON LT	O-RING -231 VITON LOW-TEMP 75
3	A/R	PAVE-Seal 150	EPOXY BLACK
2	1	0102	NUT VS32-SS
1	1	0101	HOUSING VS32-SS

PAVE will meet the assembly and test specifications of the customer as documented on this assembly drawing. Any changes must be approved by PAVE.



DESCRIPTION PAVE-Seal@ Cable Harnesses
VS32-SS-150-340-TE22-600MM-4000MM

PART NUMBER

2300

PROJECTION



NOTES:

1. LEAK TEST 725 PSI, NO BUBBLES 8 MINUTES MINIMUM.
2. HYPOT 630 VDC 500 MEGOHMS 0.01 SEC MINIMUM, WIRE TO WIRE & HOUSING
3. ALL TESTS ARE PERFORMED AT ROOM TEMPERATURE.

ITEM QTY PART# DESCRIPTION

ALL DIMENSIONS AND TOLERANCES APPLY TO FINISHED PART IN INCHES
ALLOWABLE TOLERANCES UNLESS SPECIFIED OTHERWISE: NONE +/- .5
.X DECIMAL +/- .1 .XX DECIMAL +/- .02 .XXX DECIMAL +/- .005
ANGLES +/- 1 DEG SURFACE FINISH 128 microinch RMS