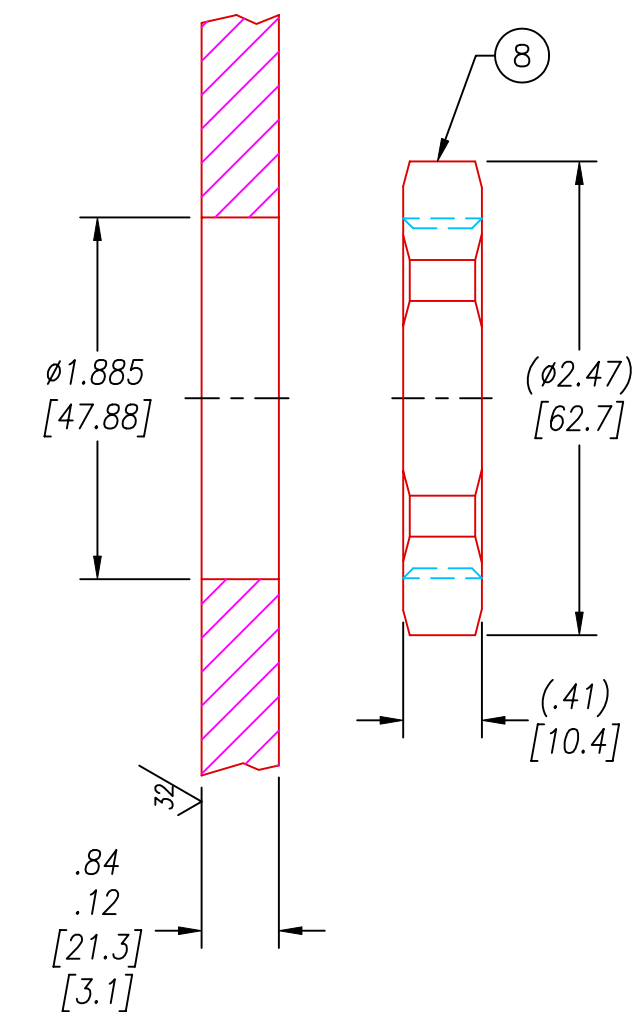


VS26 INSTALLATION PORT



NOTES:

1. HE LEAK TEST @1 ATM. 10×10^{-9} CC/S OR LESS.
2. HYPOT 630 VDC 500 M Ω 0.01 SEC MINIMUM, PIN TO PIN & THREADS WITH MATING CONNECTORS.
3. CONTINUITY TEST < 0.5 Ω WITH MATING CONNECTORS.
4. ALL TESTS ARE PERFORMED AT ROOM TEMPERATURE.
5. ALL PARTS MUST PASS ALL TESTS.
6. ALTERNATE CLOCKING (W, X, OR Y) IS INDICATED BY APPENDING THE APPROPRIATE LETTER TO THE PART NUMBER, PAVE ORDER CODE & ITEMS 3 & 4.
7. ADDING "NP" TO THE PART NUMBER & PAVE ORDER CODE INDICATES THAT ITEMS 3 & 4 ARE NOT INCLUDED.
8. NO VOIDS ARE ACCEPTABLE ON O-RING SEALING SURFACES, VOIDS SMALLER THAN $\phi.035$ [.89] ARE ACCEPTABLE ON ALL OTHER SURFACES.
9. REF-OPERATING TEMPERATURE RANGE -20°C TO 125°C.
10. DIMENSIONS ARE INCHES [millimeters].
11. PAVE-SEAL CAN BE A BI-DIRECTIONAL HERMETIC SEAL FOR VACUUM AND MOST PRESSURES. FOR PRESSURES ABOVE 150 PSI (10 BAR), CHECK WITH SALES ENGINEERING.

8	1	0185	NUT VS26-SS
7	A/R	PAVE-Seal 150	EPOXY BLACK
6	1	-226 VITON	O-RING -226 VITON 75A
5	1	0222	THREAD INSERT VS26-SS
4	1	SCP06DM28-11S* *SEE NOTES 6 & 7	PLUG 22(4#12/18#16) ELECTROLESS NICKEL PLATED SOCKET W/ STRAIN RELIEF
3	1	SCP06DM28-11P* *SEE NOTES 6 & 7	PLUG 22(4#12/18#16) ELECTROLESS NICKEL PLATED PIN W/ STRAIN RELIEF
2	1	SCP02PM28-11S* *SEE NOTE 6	RCPT 22(4#12/18#16) ELECTROLESS NICKEL PLATED SOCKET BLUE INSERT
1	1	SCP02PM28-11P* *SEE NOTE 6	RCPT 22(4#12/18#16) ELECTROLESS NICKEL PLATED PIN BLUE INSERT
ITEM	QTY	PART#	DESCRIPTION

ALL DIMENSIONS AND TOLERANCES APPLY TO FINISHED PART IN INCHES
 ALLOWABLE TOLERANCES UNLESS SPECIFIED OTHERWISE: NONE +/-0.5
 .X DECIMAL +/- 0.1 .XX DECIMAL +/- 0.02 .XXX DECIMAL +/-0.005
 ANGLES +/- 1 DEG SURFACE FINISH 128 microinch RMS

PAVE technology co.
 2751 Thunderhawk Court
 Dayton, Ohio 45414-3445
 U.S.A.
 (937)890-1100
 fax (937)890-5165
 www.pavetechnologyco.com

DESCRIPTION **PAVE-Mate@I Connectors** *SEE NOTES 6 & 7
VS26-E-150-18/4-16/12-3102PS*

PART NUMBER *SEE NOTES 6 & 7
2329*

REVISION LEVEL **A**

PROJECTION