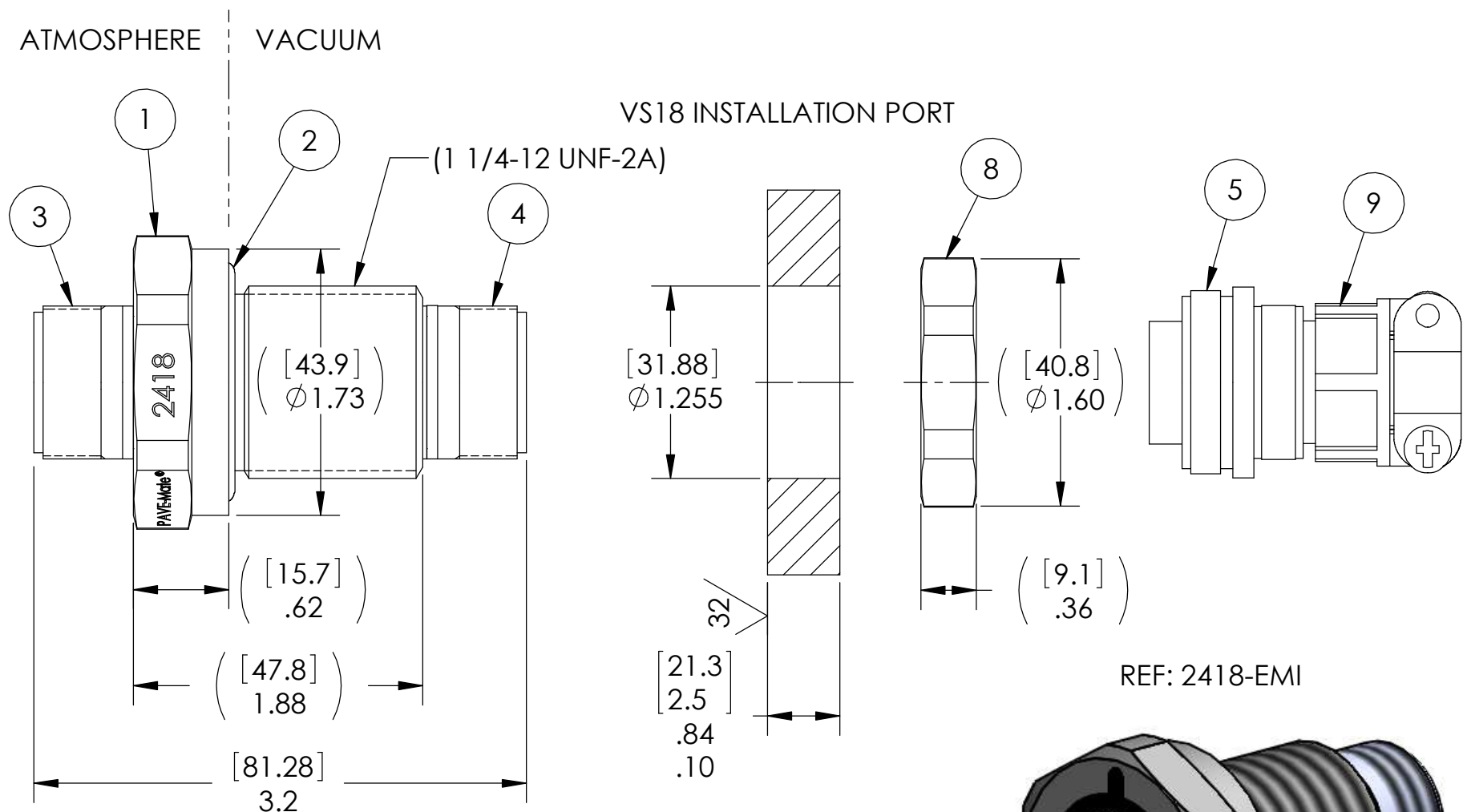
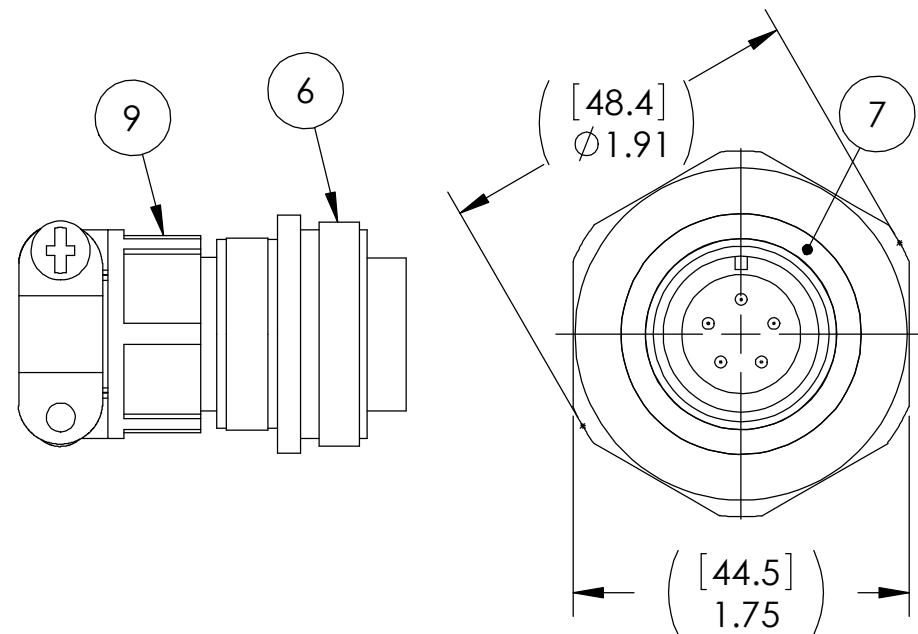


PAVE#	ITEM 1	PAVE DESCRIPTION
2418	3207	VS18-SS-150-5-16-3102PS
2418-EMI	5315	VS18-SS-150-5-16-3102PS GROUNDED SHIELD



REF: 2418-EMI

NOTES:

- HE LEAK TEST @ 1 ATM. 1×10^{-7} CC/SEC OR LESS. A GREEN PAINT DOT ON THE ATMOSPHERE SIDE INDICATES THE PART HAS PASSED THE TEST.
- HYPOT 630 VDC 500 MEGOHMS MINIMUM 0.01 SECOND MINIMUM PIN TO PIN AND HOUSING WITH MATING CONNECTORS (2418 HAS NO SHIELDING, 2418-EMI HAS A GROUNDED SHIELD).
- CONTINUITY TEST PIN TO SOCKET 0.5 OHM MAXIMUM WITH MATING CONNECTORS.
- FOR 2418-EMI ONLY SHELLS FOR ITEMS 3 & 4 TO HAVE ELECTRICAL CONTINUITY WITH HOUSING (ITEM 1).
- ALCOHOL OR FOMBLIN YVAC 3 MAY BE USED TO LUBRICATE O-RINGS FOR VACUUM HELIUM LEAK TESTING.
- ALL TESTS ARE PERFORMED AT ROOM TEMPERATURE.
- ALL PARTS MUST PASS ALL TESTS.
- COSMETIC SURFACE VOIDS NOT ON O-RING SEALING SURFACES ARE ACCEPTABLE BASED ON THE SEAL'S DIAMETER:
 $\leq .5$ [12.7] SEAL DIAMETER: $\phi .035$ [.89] MAX ALLOWED VOID SIZE
 $> .5$ [12.7] SEAL DIAMETER: $\phi .060$ [1.5] MAX ALLOWED VOID SIZE
- REF-OPERATING TEMPERATURE -20°C TO 125°C .
- DIMENSIONS ARE INCHES [millimeters].
- PAVE-SEAL CAN BE A BI-DIRECTIONAL HERMETIC SEAL FOR VACUUM AND MOST PRESSURES. FOR PRESSURES ABOVE 150 PSI (10 BAR), CHECK WITH SALES ENGINEERING.

ITEM	QTY	PART #	DESCRIPTION
9	2	MS3057-8AN	STRAIN RELIEF 5015 SHELL SIZE 16 NICKEL PLATED ALUMINUM STRAIGHT WITH CABLE CLAMP
8	1	1014	NUT VS18-SS
7	A/R	PAVE-Seal 150	EPOXY BLACK
6	1	SC3106A16S-8S	PLUG 5#16 SOC NICKEL PLATED ALUMINUM SHELL SILVER PLATED COPPER ALLOY SOLDER CUP CONTACTS
5	1	SCP06PM16S-8P	PLUG 5#16 PIN NICKEL PLATED ALUMINUM SHELL SILVER PLATED COPPER ALLOY SOLDER CUP CONTACTS
4	1	SCP02PM16S-8S	RCPT 5#16 SOC NICKEL PLATED ALUMINUM SHELL SILVER PLATED COPPER ALLOY CONTACTS
3	1	SC3102A16S-8P	RCPT 5#16 PIN NICKEL PLATED ALUMINUM SHELL SILVER PLATED COPPER ALLOY CONTACTS
2	1	-219 VITON	O-RING -219 VITON 75
1	1	SEE TABLE	HOUSING VS18-SS

PAVE technology co.

2751 Thunderhawk Court
Dayton, OH 45414-3445
U.S.A.
tel (937) 890-1100
fax (937) 8905165
www.pavetechnologyco.com

DESCRIPTION
SEE TABLE

PART NUMBER *SEE TABLE MATERIAL NOTED

2418*

REVISION LEVEL B

PROJECTION

ALL DIMENSIONS AND TOLERANCES APPLY TO FINISHED PART IN INCHES.
ALLOWABLE TOLERANCES UNLESS SPECIFIED OTHERWISE: NONE ± 0.5
X.X DECIMAL ± 0.1 X.XX DECIMAL ± 0.02 X.XXX DECIMAL ± 0.005
ANGLES ± 1 DEGREE SURFACE FINISH 128 microinch RMS