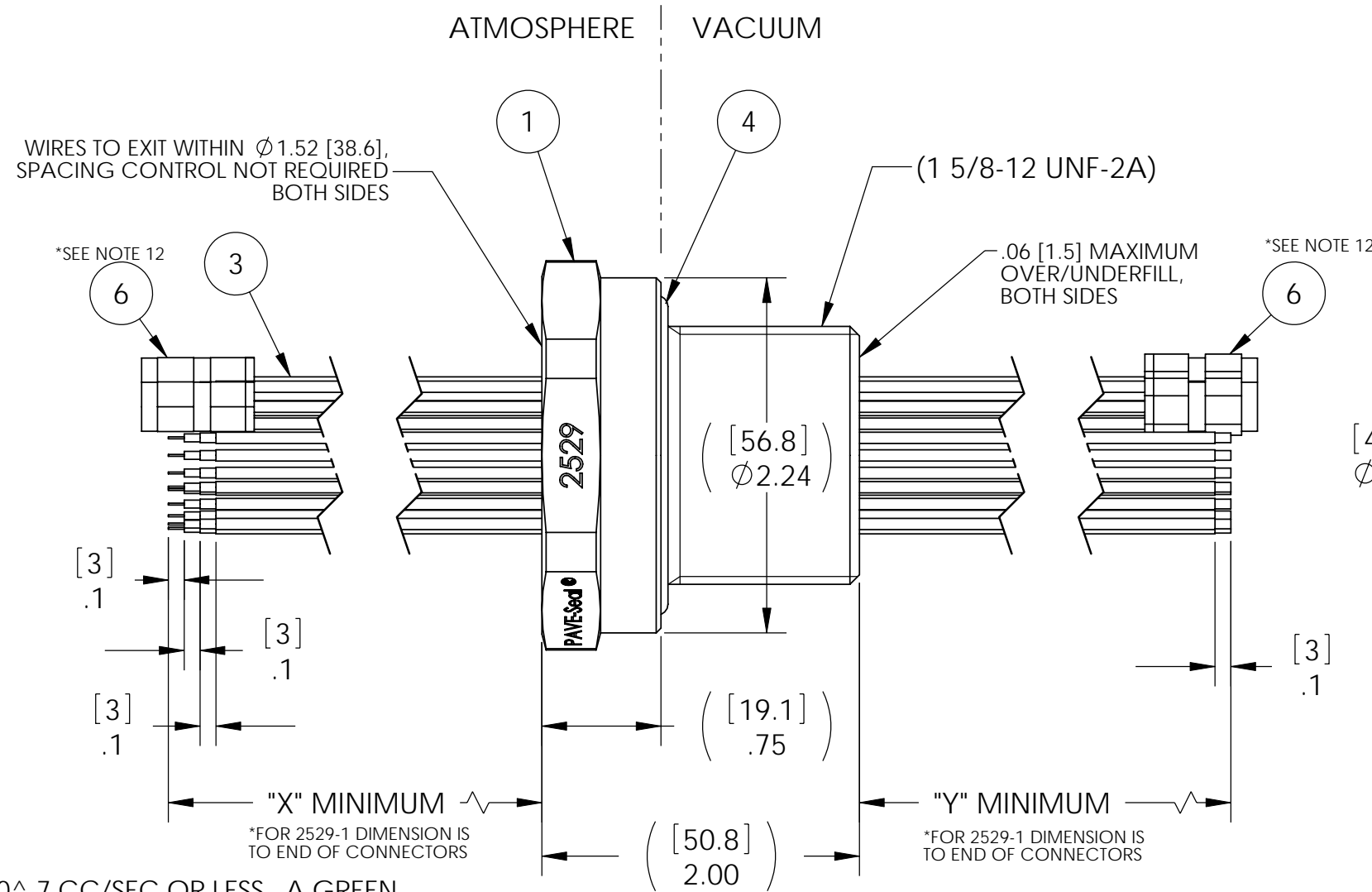
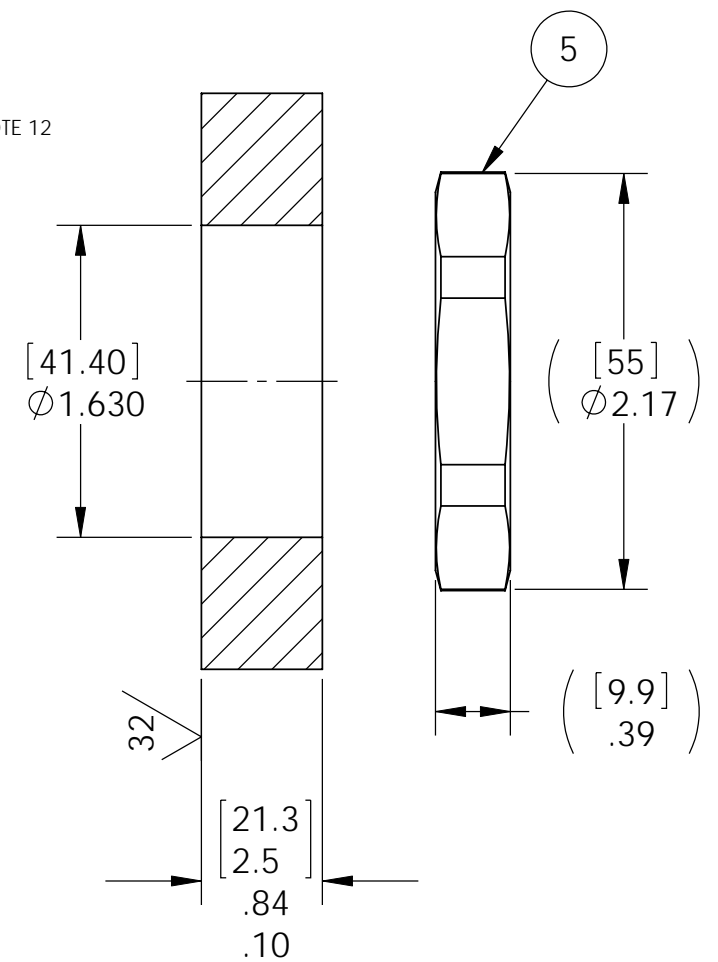


NO CONNECTORS SHOWN IN THIS VIEW



VS22 INSTALLATION PORT



NOTES:

1. HE LEAK TEST VACUUM 10X10⁻⁷ CC/SEC OR LESS. A GREEN PAINT DOT INDICATES PART HAS PASSED THE TEST.
2. HYPOT 630 VDC 500 MEGOHMS MINIMUM 0.01 SECOND MINIMUM WIRE TO WIRE, SHIELDS & HOUSING.
3. CONTINUITY TEST <.5 Ohms SHIELDING END TO END.
4. 2529-1 ONLY: CONTINUITY TEST CENTER CONDUCTOR END TO END <1.0 Ohms W/ MATING CONNECTORS.
5. ALL TESTS ARE PERFORMED AT ROOM TEMPERATURE.
6. ALL PARTS MUST PASS ALL TESTS.
7. WIRE POSITIONING IS APPROXIMATE & VARIABLE.
8. VOIDS LARGER THAN Ø .035 [.89] ARE NOT ACCEPTABLE.
9. REF-OPERATING TEMPERATURE -20 °C TO 125 °C.
10. DIMENSIONS ARE INCHES [millimeters].
11. PAVE-SEAL CAN BE A BI-DIRECTIONAL HERMETIC SEAL FOR VACUUM AND MOST PRESSURES. FOR PRESSURES ABOVE 150 PSI (10 BAR), CHECK WITH SALES ENGINEERING.
12. 2529-1 ITEM 6 IS ADDED TO BOTH ENDS FOR EACH COAX CABLE.
13. ALCOHOL OR FOMBLIN YVAC 3 MAY BE USED TO LUBE O-RINGS FOR VACUUM HELIUM LEAK TESTING.

PART #	"X"	"Y"	DESCRIPTION
2529	60 [1524]	60 [1524]	VS22-SS-150-20-RG178-60-60
2529-1	24 [610]	12 [305]	VS22-SS-150-20-RG178-24T-12T

ITEM	QTY	PART NUMBER	DESCRIPTION
6	40	PE4214 *SEE NOTE 12	CONNECTOR MALE SMA PASTERNAK
5	1	0199	NUT VS22-SS
4	1	-224 VITON	O-RING -224 VITON 75
3	20	RG178	WIRE COAX M17/93 FEP 7 STRAND SILVER-COATED WIRE O.D. .071
2	1	PAVE-Seal 150	EPOXY BLACK
1	1	0189/304SS	HOUSING VS22-SS

ALL DIMENSIONS AND TOLERANCES APPLY TO FINISHED PART IN INCHES.
 ALLOWABLE TOLERANCES UNLESS SPECIFIED OTHERWISE: NONE ±0.5
 X.X DECIMAL ±0.1 X.XX DECIMAL ±0.02 X.XXX DECIMAL ±0.005
 ANGLES ±1 DEGREE SURFACE FINISH 128 microinch RMS

PAVE technology co.
 2751 Thunderhawk Court
 Dayton, OH 45414-3445
 U.S.A.
 tel (937) 890-1100
 fax (937) 8905165
 www.pavetechnologyco.com

DESCRIPTION
 VS22-SS-150-20-RG178-*-*

PART NUMBER 2529	MATERIAL NOTED
REVISION LEVEL B	PROJECTION ☉ ◻