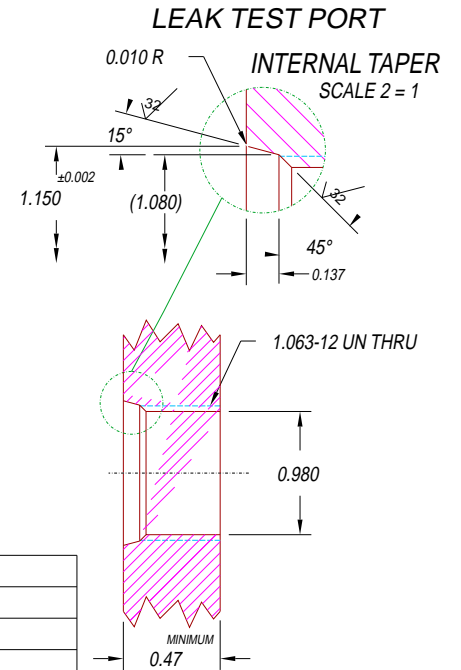
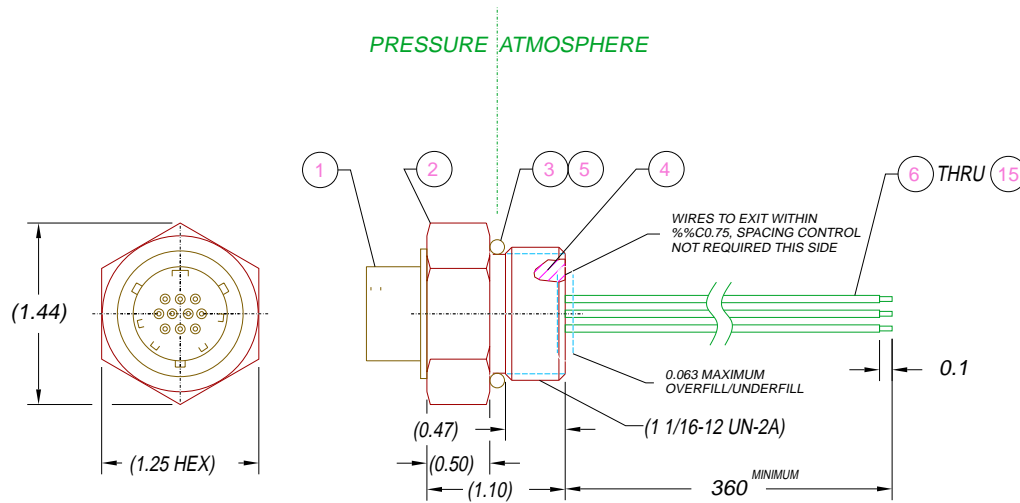


K	YELLOW
J	WHITE
H	VIOLET
G	RED
F	ORANGE
E	GREEN
D	GRAY
C	BROWN
B	BLUE
A	BLACK
SOC.	WIRE



- NOTES:**
1. LEAK TEST: 1000 PSI, NO BUBBLES 2 MINUTES MINIMUM.
 2. HYPOT 630 VDC 500 MW 0.01 SEC MINIMUM, WIRE TO WIRE & HOUSING WITH MATING PLUG
 3. ALL TESTS ARE PERFORMED AT ROOM TEMPERATURE.
 4. PERCENTAGE OF PARTS TESTED WILL BE 100% (MAY BE A LESSER PERCENTAGE FOR LARGE PRODUCTION QUANTITIES, UNLESS OTHERWISE NOTED OR REQUIRED).
 5. NO VOIDS LARGER THAN ± 0.035 ARE ACCEPTABLE.

15	30'	E20 YELLOW	WIRE 20E MIL-W-16878 .010 7/28
14	30'	E20 WHITE	WIRE 20E MIL-W-16878 .010 7/28
13	30'	E20 VIOLET	WIRE 20E MIL-W-16878 .010 7/28
12	30'	E20 RED	WIRE 20E MIL-W-16878 .010 7/28
11	30'	E20 ORG	WIRE 20E MIL-W-16878 .010 7/28
10	30'	E20 GREEN	WIRE 20E MIL-W-16878 .010 7/28
9	30'	E20 GRAY	WIRE 20E MIL-W-16878 .010 7/28
8	30'	E20 BROWN	WIRE 20E MIL-W-16878 .010 7/28
7	30'	E20 BLUE	WIRE 20E MIL-W-16878 .010 7/28
6	30'	E20 BLACK	WIRE 20E MIL-W-16878 .010 7/28
5	A/R	PARKER O-LUBE	LUBRICANT O-RING BARIUM-BASED
4	A/R	PAVE-Seal 80	EPOXY BLACK
3	1	-912 VITON	O-RING -912 VITON 75A
2	1	1386	HOUSING SO16-SS
1	1	SC3112E12-10S	RCPT 10 #20 SOCKETS
ITEM	QTY	PART NUMBER	DESCRIPTION

ALL DIMENSIONS AND TOLERANCES APPLY TO FINISHED PART IN INCHES
 ALLOWABLE TOLERANCES UNLESS SPECIFIED OTHERWISE: NONE +/-0.5
 .X DECIMAL +/- 0.1 .XX DECIMAL +/- 0.02 .XXX DECIMAL +/-0.005
 ANGLES +/- 1 DEG SURFACE FINISH 128 microinch RMS



DESCRIPTION PAVE-Mate® II Connectors
SO16-SS-80-10-TE20-3112S-360(NP)

PART NUMBER	REVISION LEVEL
2555	-
PROJECTION	