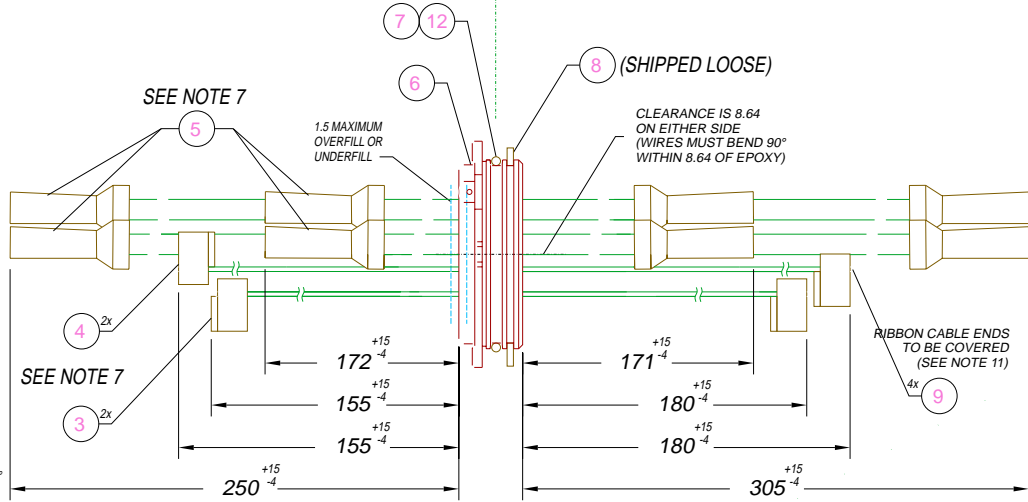
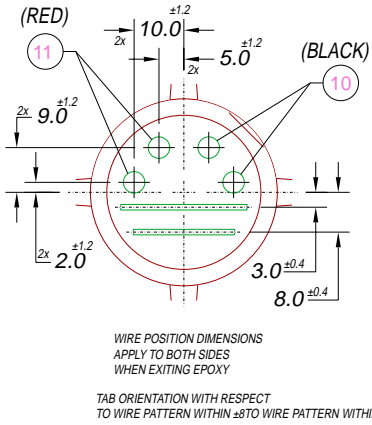
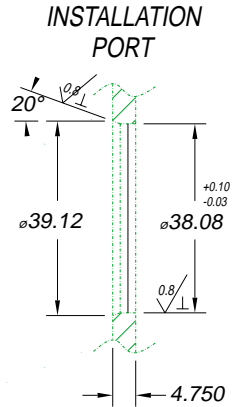
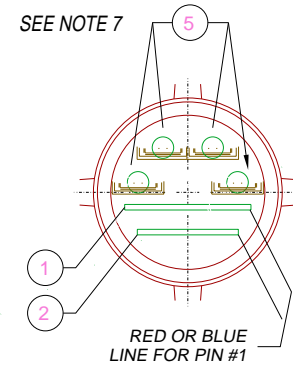


ATMOSPHERE VACUUM

FOR CLARITY, ITEMS 3, 4 & 5 ARE NOT SHOWN IN THIS VIEW



FOR CLARITY, ITEMS 3, 4 & 8 ARE NOT SHOWN IN THIS VIEW



- NOTES:**
1. THERMAL CYCLE: -40 TO 75°C BEFORE TESTING: 1 HOUR HOLD AT TEMP, 3 CYCLES. QUALIFICATION ONLY: 10 CYCLES.
 2. HE LEAK TEST @1 ATM. 10^{-6} CC/S.
 3. HYPOT 100 VDC 50 MW 0.01 SEC MINIMUM, WIRE TO WIRE.
 4. ALL TESTS ARE PERFORMED AT ROOM TEMPERATURE.
 5. PERCENTAGE OF PARTS TESTED WILL BE 100% (MAY BE A LESSER PERCENTAGE FOR LARGE PRODUCTION QUANTITIES, UNLESS OTHERWISE NOTED OR REQUIRED).
 6. CONTINUITY TESTS: ITEM 5 TO ITEM 5 (4X) <math><5\text{mW}</math>. ITEMS 3 & 4 CONTACT TO CONTACT (36X) <math><200\text{ mW}</math>.
 7. ALIGN TERMINALS (ITEMS 3, 4 & 5) AS SHOWN.
 8. DO NOT USE PULL STRENGTH TEST OF TERMINAL UNLESS FORCE IS ISOLATED FROM ITEM 9.
 9. ITEMS 1 & 2 MUST BE CENTERED INSIDE OF ITEM 6 ± 0.8 .
 10. NO VOIDS LARGER THAN % C0.89 ARE ACCEPTABLE.
 11. VISUALLY INSPECT (WITHOUT MAGNIFICATION) FOR EXPOSED CONDUCTORS.

12	A/R	SUPER O-LUBE	LUBRICANT O-RING SILICONE-BASED
11	2	PC10 RED	WIRE 10PC 413/#36 N30-36B-657-3UC1
10	2	PC10 BLK	WIRE 10PC 413/#36 N30-36B-657-2UC1
9	A/R	PAVE-Seal 150	EPOXY BLACK
8	1	SH-150-STZD	RETAINING RING 1.50 STEEL ZINC-PLATED
7	1	-028 V19457	O-RING -028 VITON 19457
6	1	2483	HOUSING SP24-F
5	8	AMP#4-520447-2	TERMINAL #10-12 RCPT
4	2	AMP #746285-4	CONNECTOR RIBBON 20 #28-30
3	2	AMP #746285-3	CONNECTOR RIBBON 16 #28-30
2	1	2518	CABLE RIBBON 16 #28 SOLID (3M #3709/16)
1	1	2517	CABLE RIBBON 20 #28 SOLID (3M #3709/20)
ITEM	QTY	PART#	DESCRIPTION

ALL DIMENSIONS AND TOLERANCES APPLY TO FINISHED PART IN MM
 ALLOWABLE TOLERANCES UNLESS SPECIFIED OTHERWISE: NONE ± 0.13
 X.X DECIMAL ± 0.25 X.XX DECIMAL ± 0.50 X.XXX DECIMAL ± 0.100
 ANGLES ± 1 DEG SURFACE FINISH 3.2 micrometers RMS

PAVE technology

2751 Thunderhawk Court
 Dayton, Ohio 45414-3445
 U.S.A.
 (937)890-1100
 fax (937)890-5165
 www.pave-technology.com

DESCRIPTION PAVE-Seal® Cable Harnesses
2483-E-150-4/1/1-PC10/20RIB/16RIB-*

PART NUMBER **2698**

REVISION LEVEL -

PROJECTION