

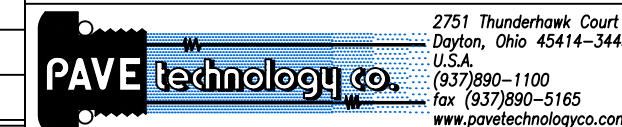
NOTES:

1. HE LEAK TEST:
2716 & 2716-2: @1 ATM 10×10^{-8} CC/S OR LESS.
2716-1: @900 PSI 10×10^{-7} CC/S OR LESS.
A GREEN PAINT DOT INDICATES PART HAS PASSED THE TEST.
2. HYPOT 630 VDC 500 MΩ .01 SEC MINIMUM, WIRE TO WIRE & HOUSING.
3. ALL TESTS ARE PERFORMED AT ROOM TEMPERATURE.
4. ALL PARTS MUST PASS ALL TESTS.
5. FINISH APPLIES TO SPOTFACE FOR O-RING SEAL ONLY.
6. DIMENSIONS ARE INCHES [millimeters].
7. NO VOIDS LARGER THAN $\phi 0.035$ [0.89] ARE ACCEPTABLE.
8. REF - OPERATING TEMPERATURE RANGE: -20 TO 125°C.
9. PAVE-SEAL CAN BE A BI-DIRECTIONAL HERMETIC SEAL FOR VACUUM AND MOST PRESSURES. FOR PRESSURES ABOVE 150 PSI (10 BAR), CHECK WITH SALES ENGINEERING.

PART #	"X"	ITEM #
2716	10 [254]	2
2716-1	10 [254]	2
2716-2	12 [305]	5

5	5	KT24 TCB	*SEE TABLE	CABLE T/C TYPE K 24AWG TEFLON W/ WELDED BEAD
4	A/R	PAVE-Seal 150		EPOXY BLACK
3	1	-112 VITON		O-RING -112 VITON 75
2	5	KT24	*SEE TABLE	CABLE T/C TYPE K 24AWG TEFLON
1	1	0892		HOUSING VS8-SS 316SS
ITEM	QTY	PART#		DESCRIPTION

ALL DIMENSIONS AND TOLERANCES APPLY TO FINISHED PART IN INCHES
 ALLOWABLE TOLERANCES UNLESS SPECIFIED OTHERWISE: NONE +/-0.5
 .X DECIMAL +/- 0.1 .XX DECIMAL +/- 0.02 .XXX DECIMAL +/-0.005
 ANGLES +/- 1 DEG SURFACE FINISH 128 microinch RMS



DESCRIPTION	PAVE-Seal Cable Harnesses	*SEE TABLE
VS8-SS-150-5P-KT24-X-X		
PART NUMBER	*SEE TABLE	REVISION LEVEL
2716*		B
PROJECTION		