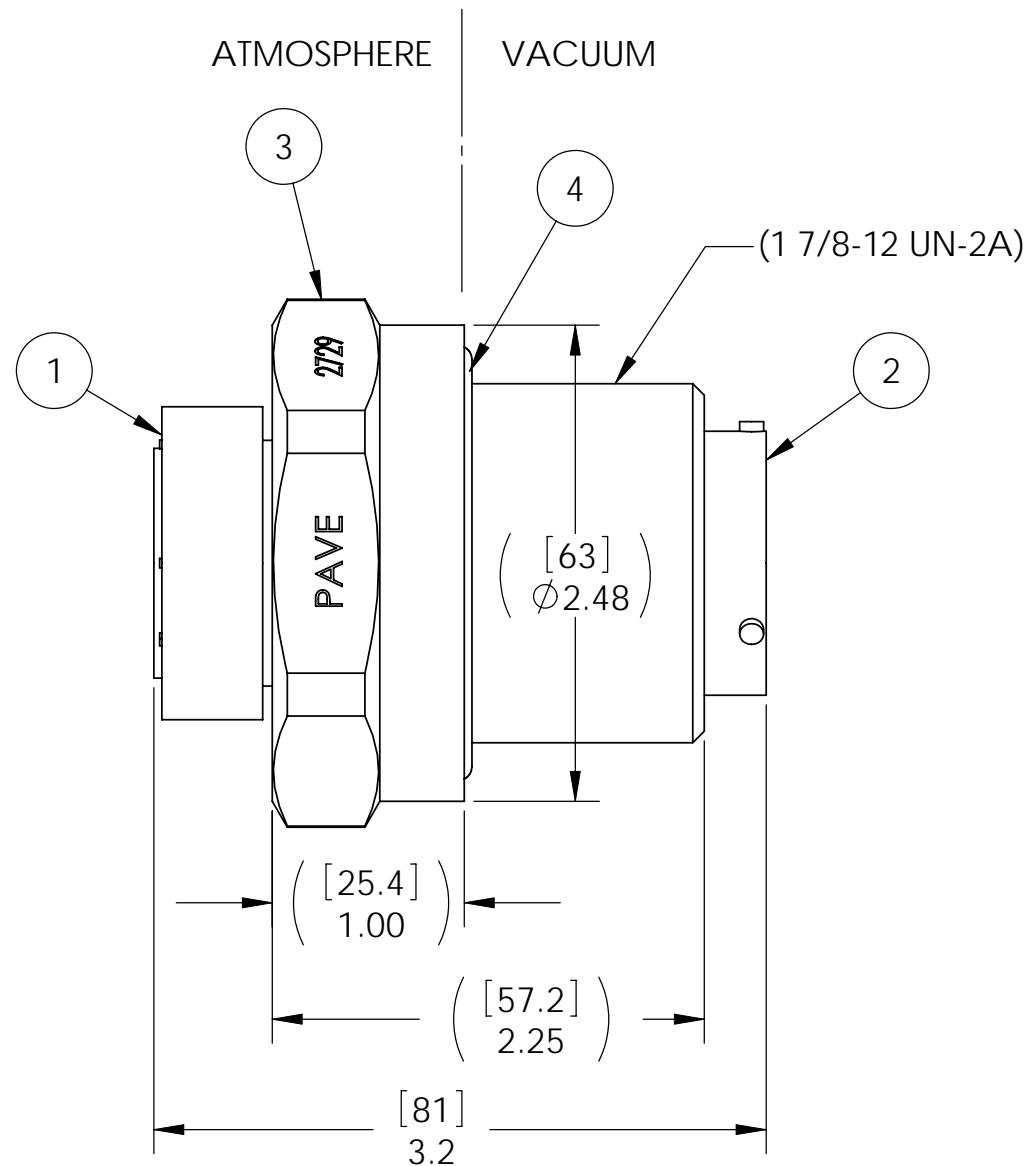
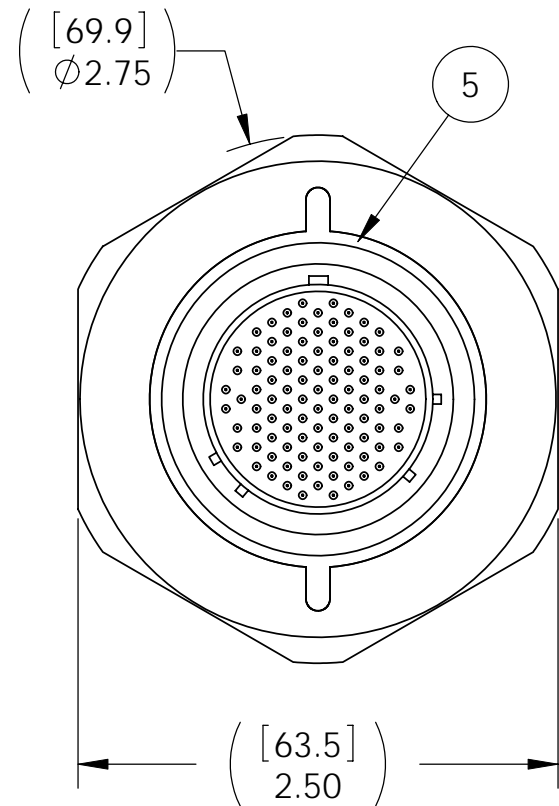
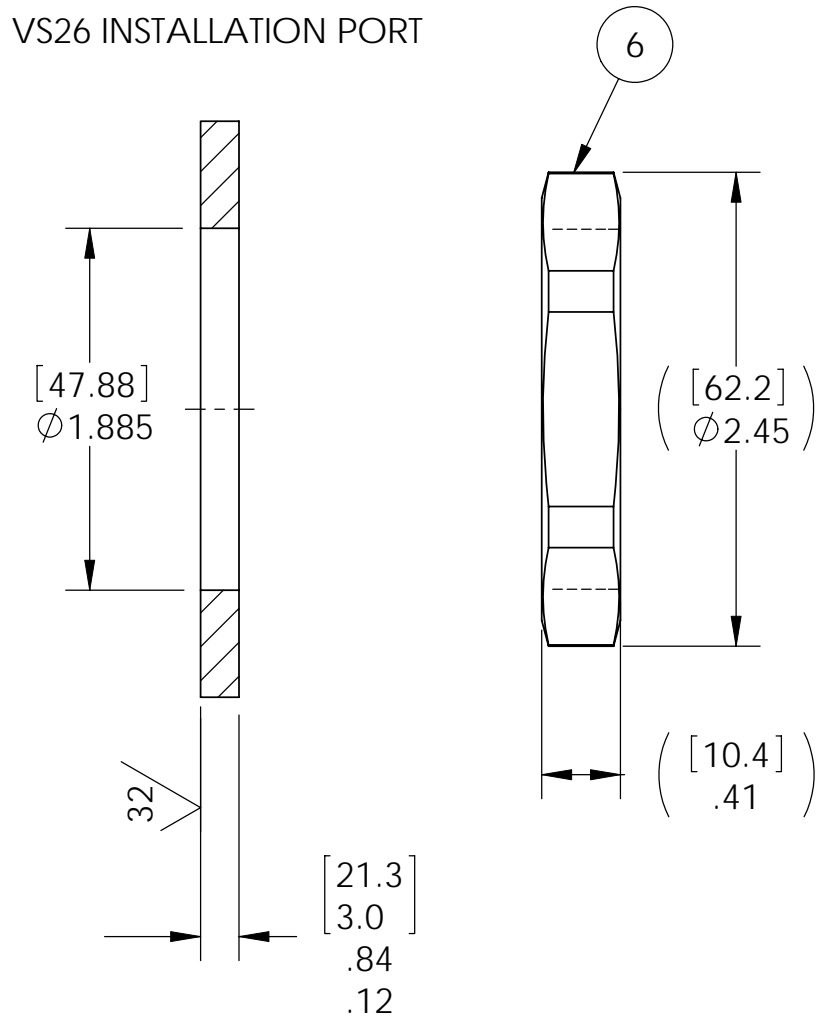


2729	MS27484T22F35P	MS27472T22F35S	KT11553-13
2729A	MS27484T22F35PA	MS27472T22F35SA	KT11553-26
PART#	ITEM 1	ITEM 2	KAMAN#



VS26 INSTALLATION PORT



NOTES:

1. HE LEAK TEST @1 ATM.  $5 \times 10^{-8}$  CC/S OR LESS.
2. HYPOT 630 VDC 500 MEGAOHMS MINIMUM 0.01 SECOND MINIMUM PIN TO PIN AND HOUSING WITH MATING CONNECTORS.
3. CONTINUITY TEST W/ MATING CONNECTORS <0.5 OHMS.
4. SHELLS FOR ITEMS 1 & 2, AND HOUSING (ITEM 3) TO HAVE ELECTRICAL CONTINUITY.
5. ALL TESTS ARE PERFORMED AT ROOM TEMPERATURE.
6. ALL PARTS MUST PASS ALL TESTS.
7. REF-OPERATING TEMPERATURE: -25 TO 125 °C
8. DIMENSIONS ARE INCHES [millimeters].
9. PAVE-SEAL CAN BE A BI-DIRECTIONAL HERMETIC SEAL FOR VACUUM AND MOST PRESSURES. FOR PRESSURES ABOVE 150 PSI (10 BAR), CHECK WITH SALES ENGINEERING.

ITEM	QTY	PART NUMBER	DESCRIPTION
6	1	0185	NUT VS26-SS
5	A/R	PAVE-Seal 150	EPOXY BLACK
4	1	-226 VITON	O-RING -226 VITON 75
3	1	3664	HOUSING VS26-SS
2	1	SEE TABLE	RCPT 100 #22 SOCS
1	1	SEE TABLE	PLUG 100 #22 PINS

**PAVE technology co.**  
 2751 Thunderhawk Court  
 Dayton, OH 45414-3445  
 U.S.A.  
 tel (937) 890-1100  
 fax (937) 8905165  
 www.pavetechnologyco.com

DESCRIPTION VS26-SS-150-100-22-27472PS	
PART NUMBER <b>2729</b>	MATERIAL NOTED REVISION LEVEL A
PROJECTION ⊙ ◻	

ALL DIMENSIONS AND TOLERANCES APPLY TO FINISHED PART IN INCHES.  
 ALLOWABLE TOLERANCES UNLESS SPECIFIED OTHERWISE: NONE ±0.5  
 X.X DECIMAL ±0.1 X.XX DECIMAL ±0.02 X.XXX DECIMAL ±0.005  
 ANGLES ±1 DEGREE SURFACE FINISH 128 microinch RMS