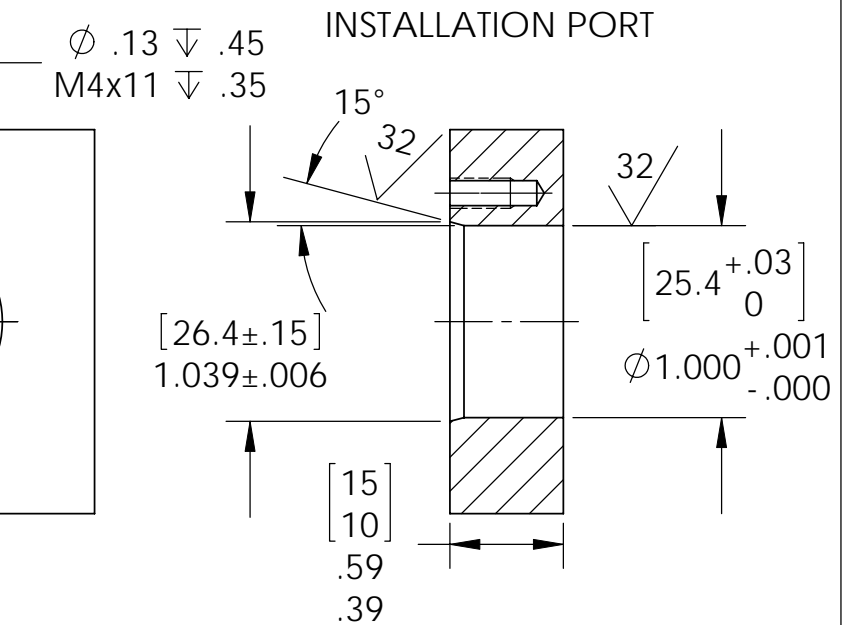
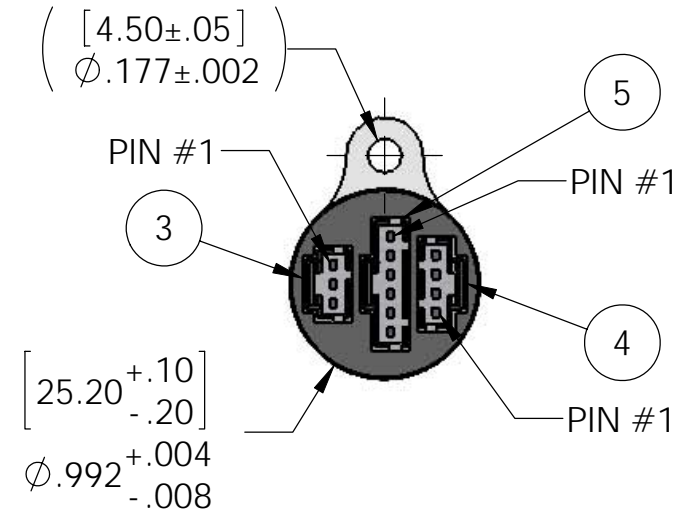
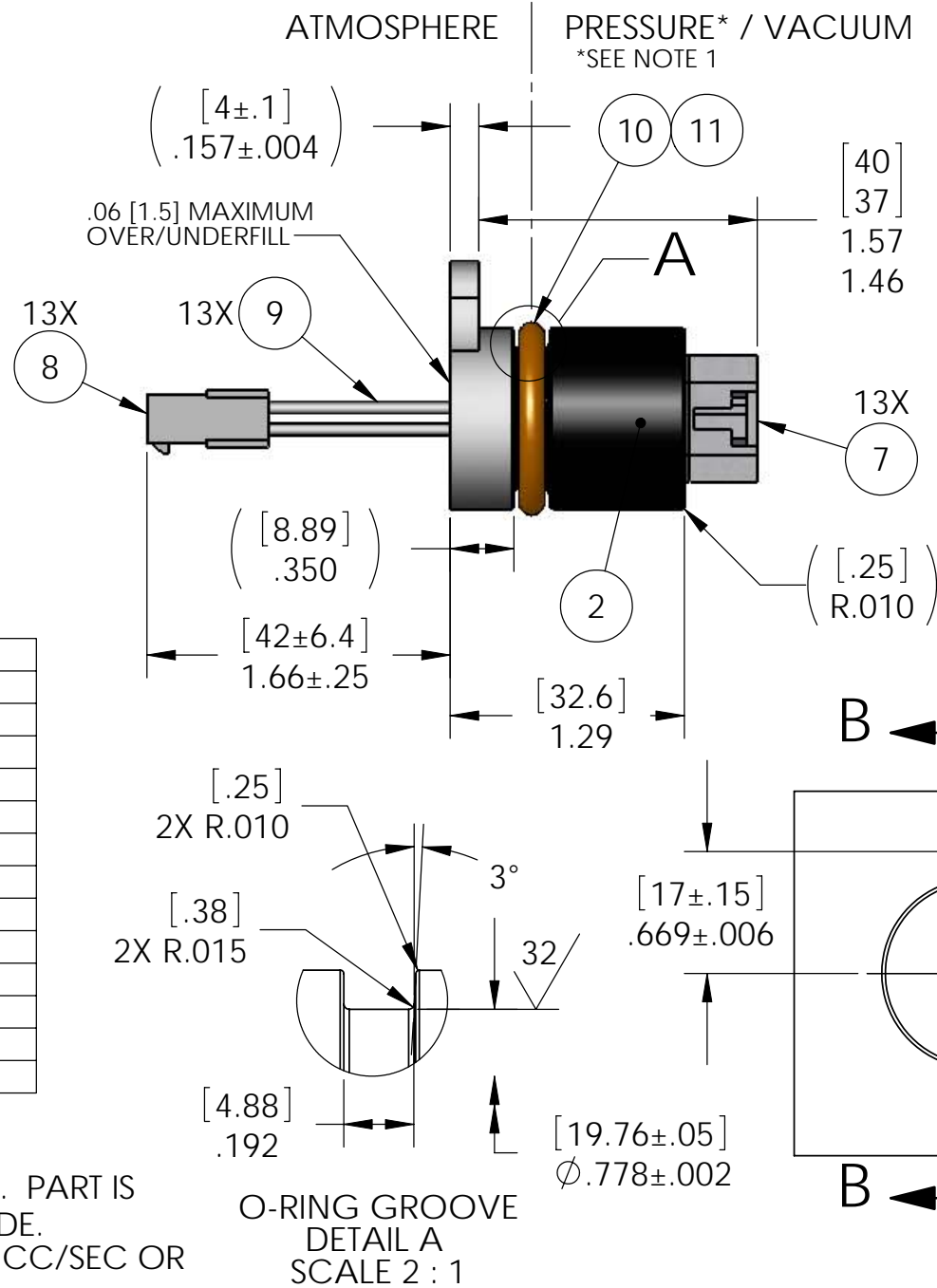


NOTE: MOLEX PLUG HAS PIN LOCATION NOTED ON HOUSING, PIN 14 IS NOT USED

AMP CIRCUIT	MOLEX CIRCUIT	PART #
(4 PIN) 1	1	PC22 A1855 BLK
(4 PIN) 2	2	PC22 A1855 BRN
(4 PIN) 3	3	PC22 A1855 RED
(4 PIN) 4	4	PC22 A1855 ORG
(3 PIN) 1	5	PC22 A1855 YLW
(3 PIN) 2	6	PC22 A1855 GRN
(3 PIN) 3	7	PC22 A1855 BLUE
(6 PIN) 1	8	PC22 A1855 VIO
(6 PIN) 2	9	PC22 A1855 GRAY
(6 PIN) 3	10	PC22 A1855 WHT
(6 PIN) 4	11	PC22 A1855 WBLU
(6 PIN) 5	12	PC22 A1855 WRED
(6 PIN) 6	13	PC22 A1855 WGRN

NOTES:

- LEAK TEST: 80 PSI, NO BUBBLES 1 MINUTE MINIMUM. PART IS TESTED WITH PRESSURE FROM THE ATMOSPHERE SIDE.
- QUALIFICATION: HE LEAK TEST VACUUM 10×10^{-7} CC/SEC OR LESS. PART IS TESTED AS SHOWN.
- HYPOT 630 VDC 500 MEGOHMS MINIMUM 0.01 SECOND MINIMUM WIRE TO WIRE.
- ALL TESTS ARE PERFORMED AT ROOM TEMPERATURE.
- ALL PARTS MUST PASS ALL TESTS.
- WIRE POSITIONING IS APPROXIMATE & VARIABLE.
- NO VOIDS ARE ACCEPTABLE ON O-RING SEALING SURFACES, VOIDS SMALLER THAN $\phi .035$ [.89] ARE ACCEPTABLE ON ALL OTHER SURFACES.
- REF-OPERATING TEMPERATURE -40°C TO 105°C .
- DIMENSIONS ARE INCHES [millimeters].



11	A/R	SUPER O-LUBE	LUBRICANT O-RING SILICONE-BASED
10	1	-210 SILICONE	O-RING -210 SILICONE 70
9	1 EA	*SEE TABLE	WIRE 22PVC MIL-W-16878E TYPE B 19/34 ALPHA 1855/19
8	13	MOL # 43031-0003	CONTACT PIN #20-24AWG CRIMP GOLD PLATED
7	13	AMP #104505-6	CONTACT PIN 22-26 AWG GOLD CRIMP
6	1	MOL 43020-1401	PLUG 14 PIN
5	1	AMP #103653-5	CONNECTOR 6 PIN
4	1	AMP #103653-3	CONNECTOR 4 PIN
3	1	AMP #103653-2	CONNECTOR 3 PIN
2	A/R	PAVE-Seal 150	EPOXY BLACK
1	1	3423	HOUSING SP16E-AL
ITEM	QTY	PART NUMBER	DESCRIPTION

PAVE technology co.

2751 Thunderhawk Court
Dayton, OH 45414-3445
U.S.A.
tel (937) 890-1100
fax (937) 8905165
www.pavetechnologyco.com

DESCRIPTION
SP16E-AL-150-13-PC22-MOLEX-1

PART NUMBER
2865

MATERIAL NOTED

REVISION LEVEL
F

PROJECTION
☉ ◁

ALL DIMENSIONS AND TOLERANCES APPLY TO FINISHED PART IN INCHES.
ALLOWABLE TOLERANCES UNLESS SPECIFIED OTHERWISE: NONE ±0.5
X.X DECIMAL ±0.1 X.XX DECIMAL ±0.02 X.XXX DECIMAL ±0.005
ANGLES ±1 DEGREE SURFACE FINISH 128 MICROINCH RMS