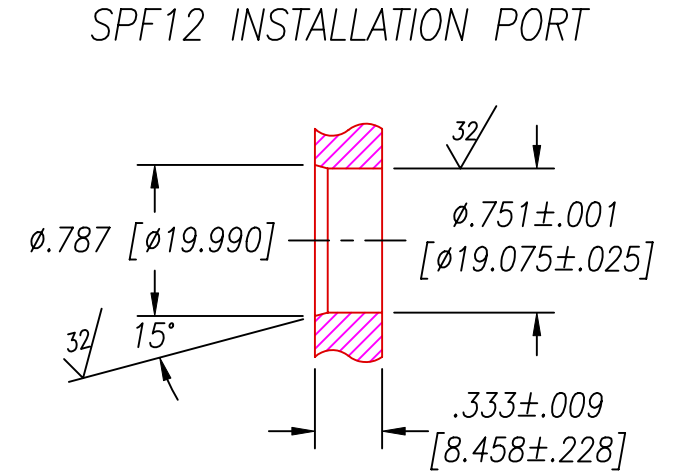
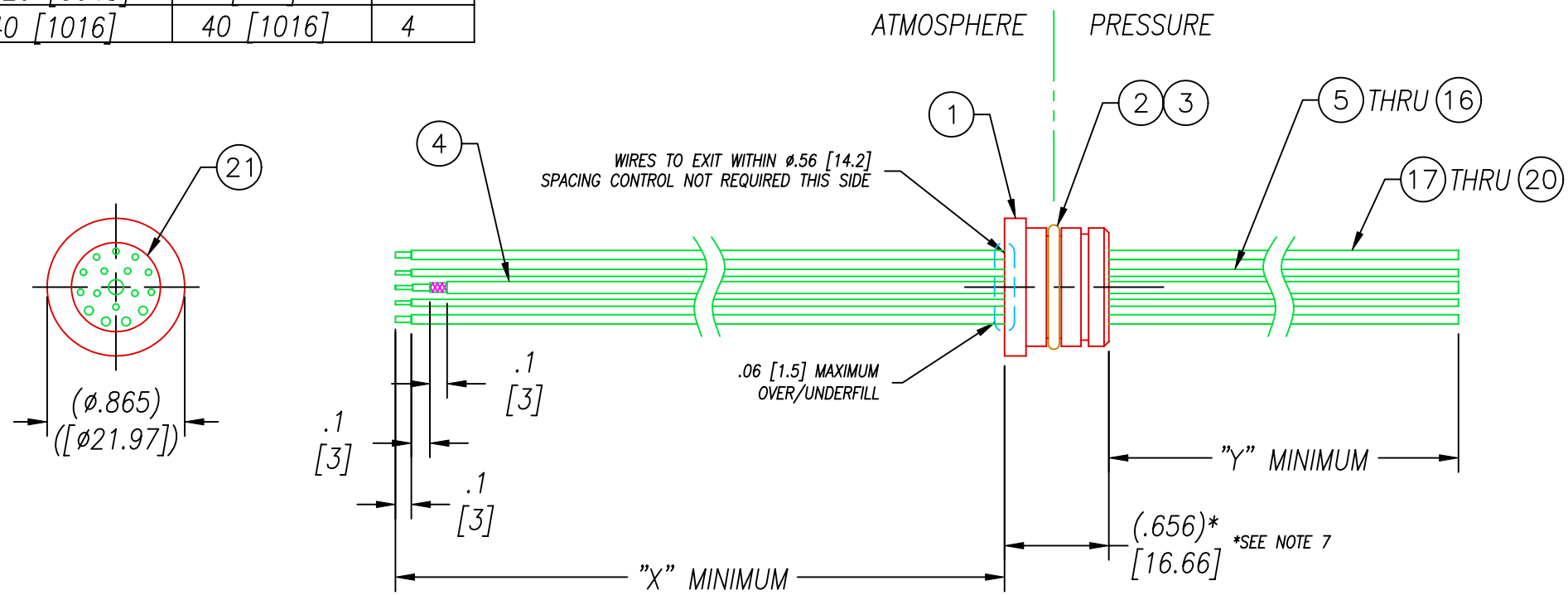


| PART# | "X" | "Y" | "Z" |
|--------|------------|-----------|-----|
| 2903 | 120 [3048] | 6 [152] | 5 |
| 2903-1 | 40 [1016] | 40 [1016] | 4 |



RECOMMENDED RETAINING RING
TRUARC #5100-75 OR EQUAL

| 21 | A/R | PAVE-Seal 150 | EPOXY BLACK |
|------|-----|----------------|--------------------------------|
| 20 | 1 | E20 ORG | WIRE 20E MIL-W-16878 .010 7/28 |
| 19 | 1 | E20 YELLOW | WIRE 20E MIL-W-16878 .010 7/28 |
| 18 | 1 | E20 GRAY | WIRE 20E MIL-W-16878 .010 7/28 |
| 17 | 1 | E20 BLACK | WIRE 20E MIL-W-16878 .010 7/28 |
| 16 | 1 | E24 RED/WHITE | WIRE 24E MIL-W-16878/4 7/#32 |
| 15 | 1 | E24 GRN/WHITE | WIRE 24E MIL-W-16878/4 7/#32 |
| 14 | 1 | E24 BLUE/WHITE | WIRE 24E MIL-W-16878/4 7/#32 |
| 13 | 1 | E24 BLACK | WIRE 24E MIL-W-16878/4 7/#32 |
| 12 | 1 | E24 WHITE | WIRE 24E MIL-W-16878/4 7/#32 |
| 11 | 1 | E24 RED | WIRE 24E MIL-W-16878/4 7/#32 |
| 10 | 1 | E24 VIOLET | WIRE 24E MIL-W-16878/4 7/#32 |
| 9 | 1 | E24 ORANGE | WIRE 24E MIL-W-16878/4 7/#32 |
| 8 | 1 | E24 GREEN | WIRE 24E MIL-W-16878/4 7/#32 |
| 7 | 1 | E24 GRAY | WIRE 24E MIL-W-16878/4 7/#32 |
| 6 | 1 | E24 BROWN | WIRE 24E MIL-W-16878/4 7/#32 |
| 5 | 1 | E24 BLUE | WIRE 24E MIL-W-16878/4 7/#32 |
| 4 | 1 | RG188A | CABLE COAX .108DIA TFE+TFE |
| 3 | A/R | PARKER O-LUBE | LUBRICANT O-RING BARIUM-BASED |
| 2 | 1 | -016 BUNA | O-RING -016 BUNA 75 |
| 1 | 1 | 0130 | HOUSING SPF12-E |
| ITEM | QTY | PART # | DESCRIPTION |

- NOTES:
1. LEAK TEST: 80 PSI, NO BUBBLES "Z" MINUTES MINIMUM.
 2. HYPOT 630 VDC 500 M Ω 0.01 SEC MINIMUM, WIRE TO WIRE & SHIELD.
 3. ALL TESTS ARE PERFORMED AT ROOM TEMPERATURE.
 4. ALL PARTS MUST PASS ALL TESTS.
 5. WIRES ARE NOT REQUIRED TO BEND SHARPLY AT EPOXY SEAL SURFACE.
 6. WIRE COLOR POSITIONS ARE APPROXIMATE AND VARIABLE.
 7. DIMENSION IS OVERALL LENGTH EXCLUDING OVERFILL ON ATMOSPHERE SIDE OF HOUSING.
 8. DIMENSIONS ARE INCHES [millimeters].
 9. NO VOIDS ARE ACCEPTABLE ON O-RING SEALING SURFACES, VOIDS SMALLER THAN $\phi 0.035$ [.89] ARE ACCEPTABLE ON ALL OTHER SURFACES.
 10. REF-PARTS ARE DEFLASHED ON PARTING LINE $+0.005$ [.13] MAXIMUM.
 11. REF - OPERATING TEMPERATURE RANGE: -30 TO 100°C .
 12. PAVE-SEAL CAN BE A BI-DIRECTIONAL HERMETIC SEAL FOR VACUUM AND MOST PRESSURES. FOR PRESSURES ABOVE 150 PSI (10 BAR), CHECK WITH SALES ENGINEERING.

ALL DIMENSIONS AND TOLERANCES APPLY TO FINISHED PART IN INCHES
ALLOWABLE TOLERANCES UNLESS SPECIFIED OTHERWISE: NONE ± 0.5
.X DECIMAL ± 0.1 .XX DECIMAL ± 0.02 .XXX DECIMAL ± 0.005
ANGLES ± 1 DEG SURFACE FINISH 128 microinch RMS

PAVE technology co. 2751 Thunderhawk Court
Dayton, Ohio 45414-3445
U.S.A.
(937)890-1100
fax (937)890-5165
www.pavetechnologyco.com

DESCRIPTION PAVE-Seal® Cable Harnesses
SPF12-E-150-1/4/12-RG188AU/TE20/24-X-Y

PART NUMBER *SEE TABLE
2903*

REVISION LEVEL C

PROJECTION