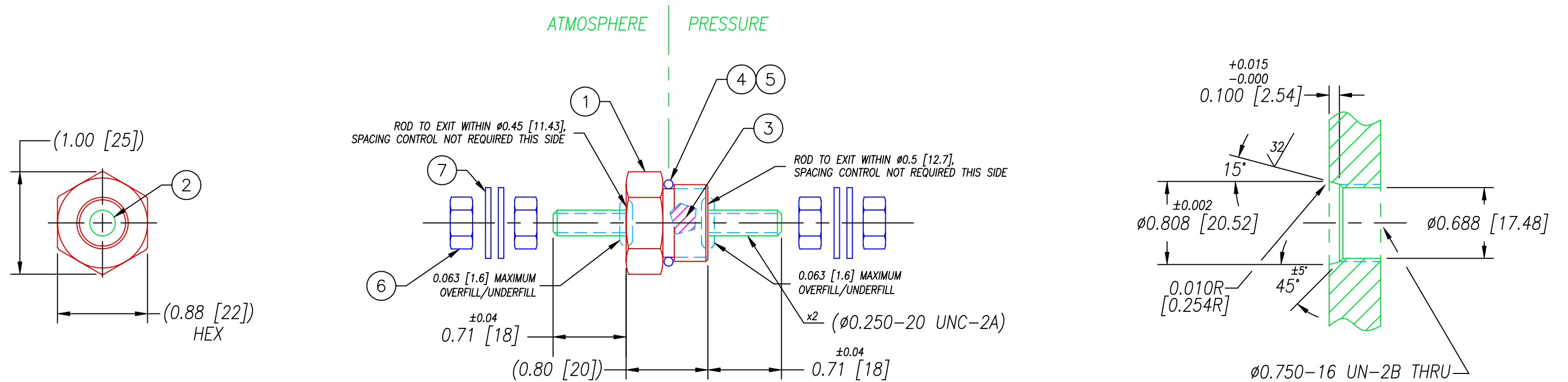


INSTALLATION/
LEAK TEST PORT



NOTES:

1. LEAK TEST: 300 PSI, NO BUBBLES 5 SECONDS MINIMUM.
2. HYPOT 630 VDC 500 MΩ 0.01 SEC MINIMUM, COPPER ROD TO HOUSING.
3. ALL TESTS ARE PERFORMED AT ROOM TEMPERATURE.
4. ALL PARTS MUST PASS ALL TESTS.
5. REF-OPERATING TEMPERATURE -40°C TO 155°C.
6. DIMENSIONS ARE INCHES [millimeters].
7. PAVE-SEAL CAN BE A BI-DIRECTIONAL HERMETIC SEAL FOR VACUUM AND MOST PRESSURES. FOR PRESSURES ABOVE 150 PSI (10 BAR), CHECK WITH SALES ENGINEERING.

7	4	BRASS WASH 1/4"	WASHER BRASS ID 0.260 OD 0.6875 THK 0.051
6	4	BRASS NUTS 1/4"	NUT BRASS WAF 7/16 THK 7/32
5	A/R	PARKER O-LUBE	LUBRICANT O-RING BARIUM BASED
4	1	-908 BUNA	O-RING -908 BUNA 75
3	A/R	PAVE-Seal 200HV	EPOXY BLUE
2	1	3116	1/4-20 UNC THREADED COPPER ROD
1	1	2147	HOUSING S012-SS
ITEM	QTY	PART#	DESCRIPTION

ALL DIMENSIONS AND TOLERANCES APPLY TO FINISHED PART IN INCHES
ALLOWABLE TOLERANCES UNLESS SPECIFIED OTHERWISE: NONE +/-0.5
.X DECIMAL +/- 0.1 .XX DECIMAL +/- 0.02 .XXX DECIMAL +/-0.005
ANGLES +/- 1 DEG SURFACE FINISH 128 microinch RMS

PAVE technology co. 2751 Thunderhawk Court
Dayton, Ohio 45414-3445
U.S.A.
(937)890-1100
fax (937)890-5165
www.pavetechnologyco.com

DESCRIPTION PAVE-Seal® Cable Harnesses
S012-SS-200HV-.25CU-.7-.7

PART NUMBER 2910

REVISION LEVEL C

PROJECTION