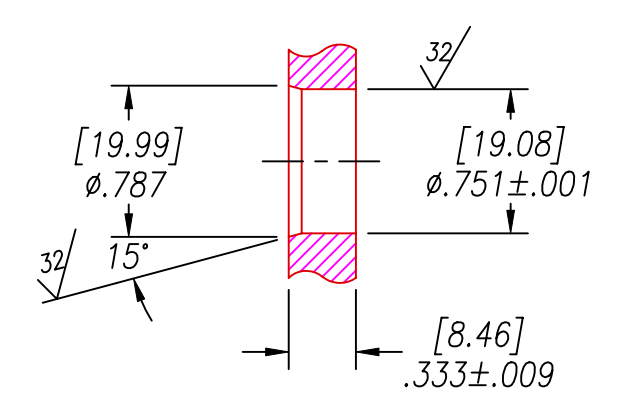


SPF12 INSTALLATION PORT



RECOMMENDED RETAINING RING  
TRUARC #5100-75 OR EQUAL

NOTES:

1. HE LEAK TEST @1 ATM.  $10 \times 10^{-8}$  CC/S OR LESS. CLEAN O-RING WITH METHANOL BEFORE INSERTING INTO TEST PORT.
2. HYPOT 630 VDC 500 MΩ 0.01 SEC MINIMUM, CENTER CONDUCTOR TO SHIELD.  
1 KVDC HYPOT TEST WITH 5 μA MAXIMUM LEAKAGE CENTER CONDUCTOR TO LEAK TEST PORT.
3. ALL TESTS ARE DONE AT ROOM TEMPERATURE & HUMIDITY.
4. ALL PARTS MUST PASS ALL TESTS.
5. O-RING TO BE SHIPPED DRY, NO O-LUBE ALLOWED.
6. CONTINUOUS CONTACT OF METHANOL TO VITON O-RING WILL CAUSE O-RING TO SWELL AND NOT SEAL PROPERLY.
7. "PAVE" & "2921" MARKINGS APPROXIMATELY AS SHOWN.
8. CONTINUITY TEST FROM END OF MATING CONNECTOR TO END OF BUS WIRE TERMINAL < 95 mΩ,  
TO END OF BLACK WIRE TERMINAL < 24 mΩ.
9. LABEL W/"HV RAD FDTHRU", "1017758/E", "PAV".
10. LABEL W/INFORMATION SPECIFIED, ALL LABELS TO BE INSTALLED SO THAT ALL INFORMATION ON LABEL IS VISIBLE.
11. PACKAGE ASSEMBLY INDIVIDUALLY IN A PLASTIC BAG AND INCLUDE "1017758 REV:E" ON BAG LABEL.
12. NO VOIDS ARE ACCEPTABLE ON O-RING SEALING SURFACES, VOIDS SMALLER THAN 0.035 ARE ACCEPTABLE ON ALL OTHER SURFACES.
13. DIMENSIONS ARE INCHES[mm].

WIRING CHART		
ITEM 6-COND	ITEM 4 BUS	16.0[406]
ITEM 6-SHIELD	ITEM 5 BLK	15.0[381]
FROM	TO	X

ITEM	QTY	PART#	DESCRIPTION
10	1	UPCSCI#1521 ORL	TUBING FEP 1/16"ID X 1/8"OD
9	1	PE4098	CONNECTOR MHV MALE RG59 CLAMP
8	1	CRS-TO-2202	TERMINAL RING #2 26-24 AWG
7	2	-	PRINTABLE LABEL
6	1	RG59/U	BELDEN 8241A OR EQUAL COAX
5	1	E20 SOLID BLK	WIRE 20E UL1213 SOLID CONDUCTOR
4	1	TIN COPPER #20	WIRE 20 TINNED SOLID
3	1	-016 VITON	O-RING -016 VITON 75
2	A/R	PAVE-Seal 150	EPOXY BLUE
1	1	0130	HOUSING SPF12-E

ALL DIMENSIONS AND TOLERANCES APPLY TO FINISHED PART IN INCHES  
ALLOWABLE TOLERANCES UNLESS SPECIFIED OTHERWISE: NONE +/-0.5  
.X DECIMAL +/- 0.1 .XX DECIMAL +/- 0.02 .XXX DECIMAL +/-0.005  
ANGLES +/- 1 DEG SURFACE FINISH 128 microinch RMS

2751 Thunderhawk Court  
Dayton, Ohio 45414-3445  
U.S.A.  
(937)890-1100  
fax (937)890-5165  
www.pavetechnologyco.com

**PAVE technology co.**

DESCRIPTION PAVE-Seal Cable Harnesses  
SPF12-E-150-1/1/1-RG59U/E20/BUS20-17-15/16

PART NUMBER **2921**

REVISION LEVEL **F**

PROJECTION