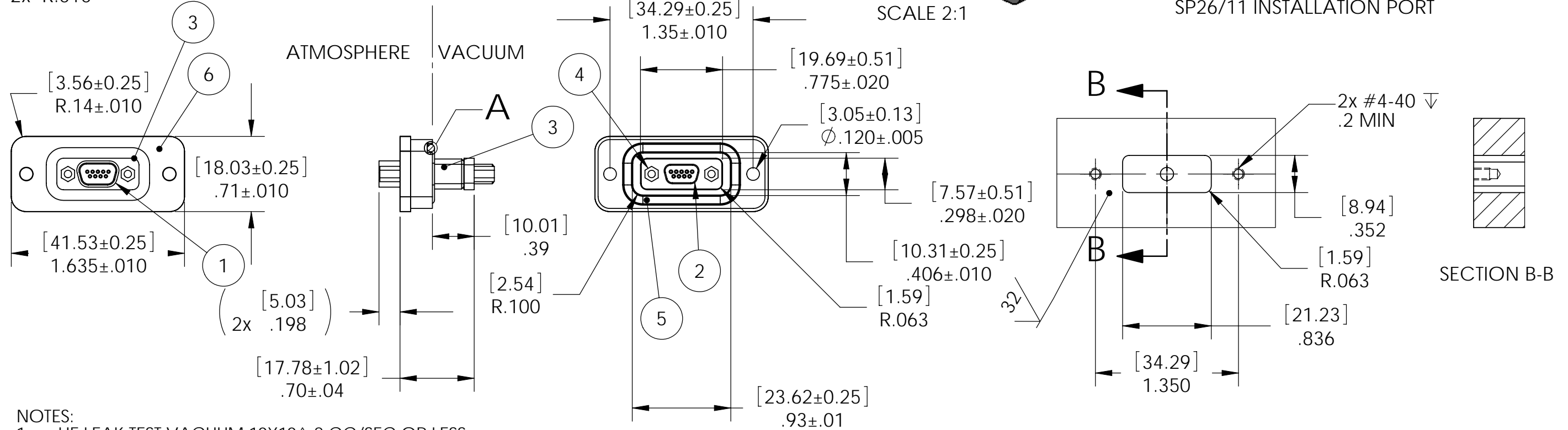


SCALE 2:1

SP26/11 INSTALLATION PORT



NOTES:

1. HE LEAK TEST VACUUM 10×10^{-8} CC/SEC OR LESS.
2. HYPOT 500 VDC 200 MEGOHMS MINIMUM 0.01 SECOND MINIMUM WIRE TO WIRE AND HOUSING.
3. CONTINUITY TEST 0.5 OHMS MAXIMUM MATING CONNECTOR TO MATING CONNECTOR.
4. ALL TESTS ARE PERFORMED AT ROOM TEMPERATURE.
5. ALL PARTS MUST PASS ALL TESTS.
6. NO VOIDS ARE ACCEPTABLE ON O-RING SEALING SURFACES, VOIDS SMALLER THAN $\phi 0.035$ ARE ACCEPTABLE ON ALL OTHER SURFACES.
7. REF-OPERATING TEMPERATURE -20°C TO 125°C .
8. DIMENSIONS ARE INCHES [MILLIMETERS].
9. ORDER PAVE#3501R FOR PINS ON THE ATMOSPHERE SIDE & SOCKETS ON THE VACUUM SIDE (REVERSE ITEMS 1&2).
10. PAVE-MATE CAN BE A BI-DIRECTIONAL HERMETIC SEAL FOR VACUUM AND MOST PRESSURES. FOR PRESSURES ABOVE 150 PSI (10 BAR), CHECK WITH SALES ENGINEERING.

*SEE NOTE 9

ITEM	QTY	PART NUMBER	DESCRIPTION
6	1	3515	PLATE TOP SS MIRCO D 9 PIN
5	1	-019 VITON	O-RING -019 VITON 75
4	4	JACKPOST	"P" STYLE 2-56 UNC
3	A/R	PAVE-Seal 150	EPOXY BLACK
2	1	M8351301-AN*	CONNECTOR 9 PIN 83513 MICRO D
1	1	M8351302-AN*	CONNECTOR 9 SOC 83513 MICRO D

PAVE technology co.
 2751 Thunderhawk Court
 Dayton, OH 45414-3445
 U.S.A.
 tel (937) 890-1100
 fax (937) 8905165
 www.pavetechnologyco.com

DESCRIPTION
 SP26/11-SS-150-9-26-M83513SP*

PART NUMBER
3501*

MATERIAL NOTED

REVISION LEVEL
 C

PROJECTION

ALL DIMENSIONS AND TOLERANCES APPLY TO FINISHED PART IN INCHES.
 ALLOWABLE TOLERANCES UNLESS SPECIFIED OTHERWISE: NONE ± 0.5
 X.X DECIMAL ± 0.1 X.XX DECIMAL ± 0.02 X.XXX DECIMAL ± 0.005
 ANGLES ± 1 DEGREE SURFACE FINISH 128 microinch RMS