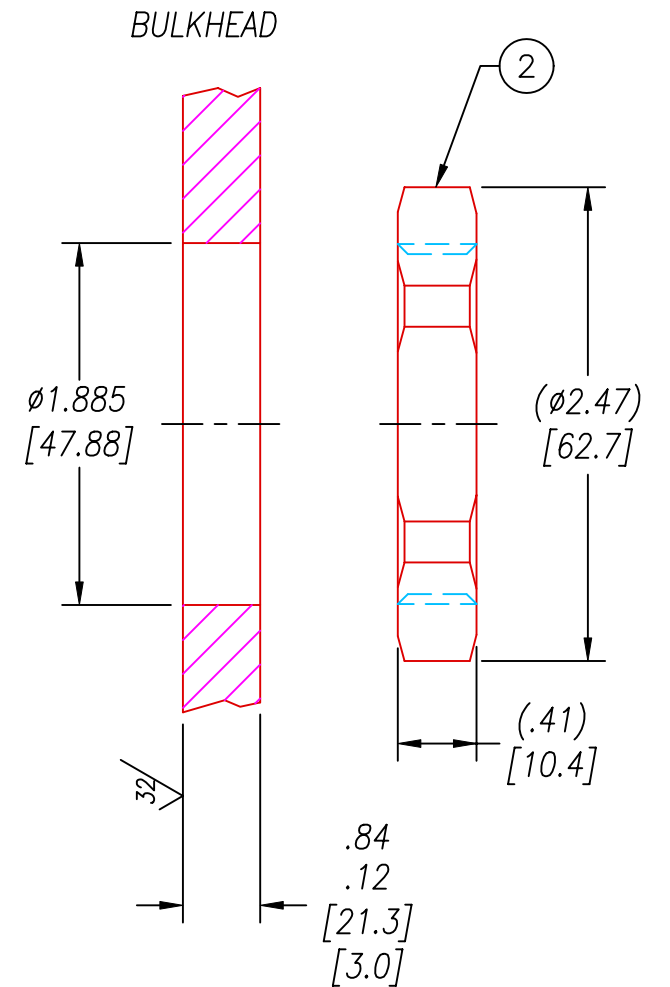
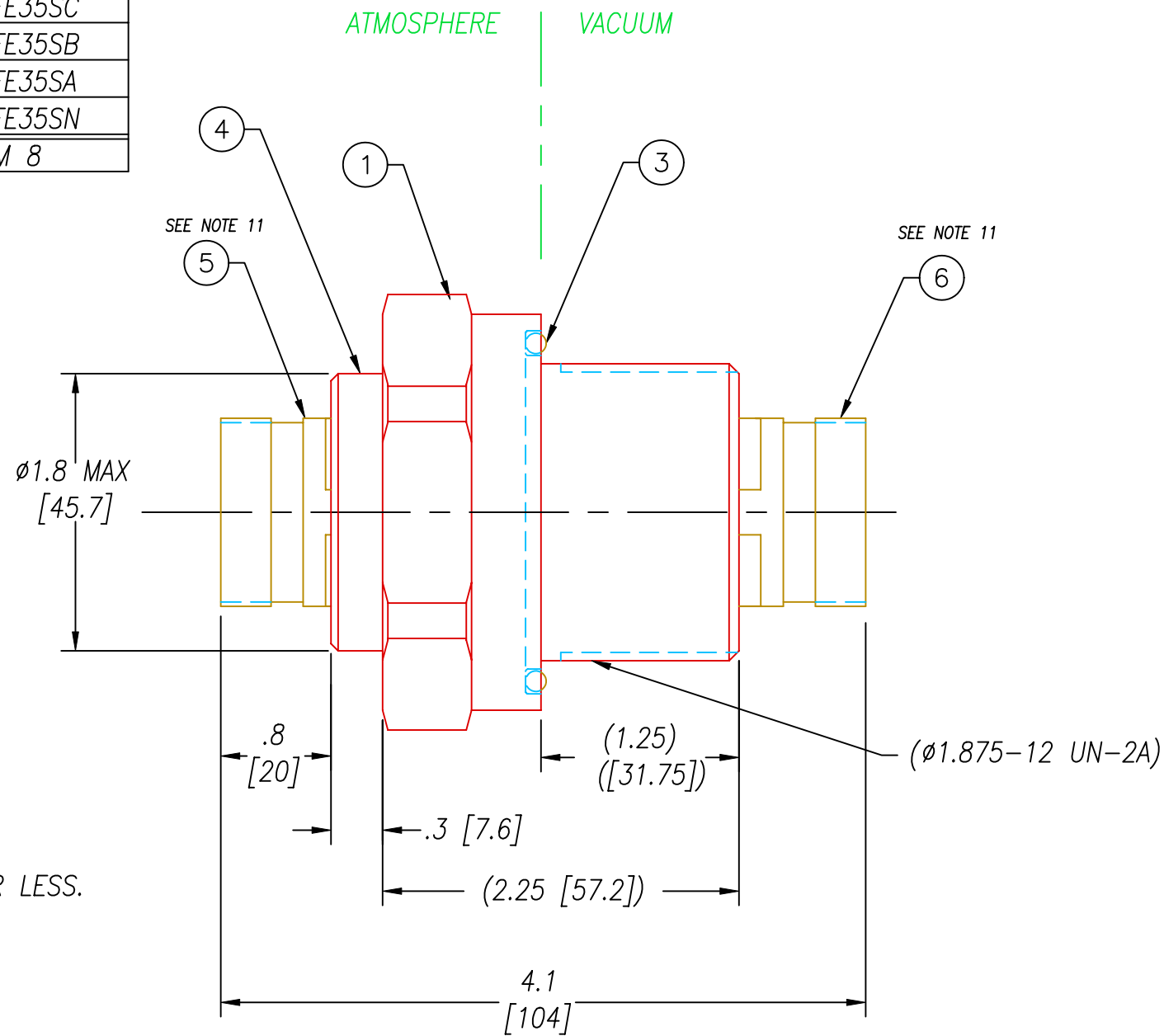
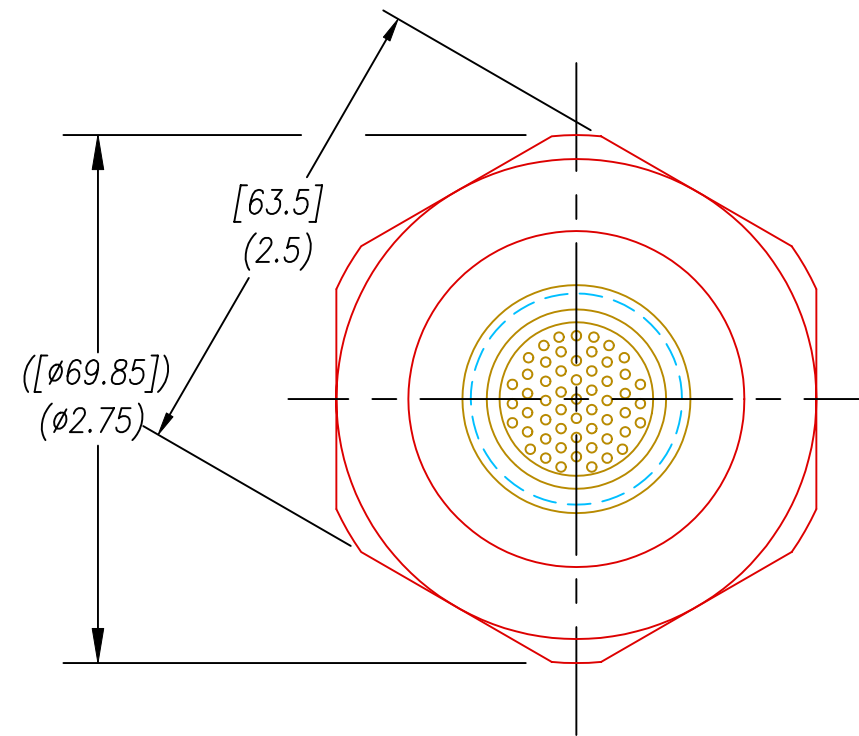


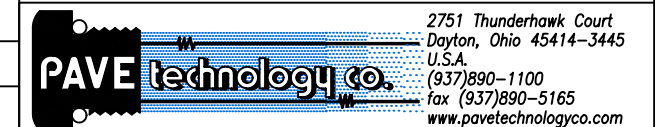
3566-C	20FE35PC	20FE35SC	26FE35PC	26FE35SC
3566-B	20FE35PB	20FE35SB	26FE35PB	26FE35SB
3566-A	20FE35PA	20FE35SA	26FE35PA	26FE35SA
3566	20FE35PN	20FE35SN	26FE35PN	26FE35SN
PAVE #	ITEM 5	ITEM 6	ITEM 7	ITEM 8



- NOTES:
1. LEAK TEST: HE LEAK TEST @ 1 ATM.  $10 \times 10^{-7}$  CC/S OR LESS.
  2. HYPOT 630 VDC 500 M $\Omega$  0.01 SEC MINIMUM, PIN TO SOCKET & HOUSING W/MATING CONNECTORS.
  3. CONTINUITY TEST: < 1  $\Omega$  PIN TO SOCKET.
  4. ALL TESTS ARE PERFORMED AT ROOM TEMPERATURE.
  5. ALL PARTS MUST PASS ALL TESTS.
  6. ITEMS 7, 8 & 9 INCLUDED (NOT SHOWN) UNLESS "NP" IS ADDED TO THE PAVE PART NUMBER.
  7. NO COSMETIC SURFACE VOIDS LARGER THAN  $\phi$ .035 [.89] ARE ACCEPTABLE.
  8. DIMENSIONS ARE INCHES [millimeters].
  9. REF-OPERATING TEMPERATURE RANGE -20°C TO 125°C.
  10. PAVE-SEAL CAN BE A BI-DIRECTIONAL HERMETIC SEAL FOR VACUUM AND MOST PRESSURES. FOR PRESSURES ABOVE 150 PSI (10 BAR), CHECK WITH SALES ENGINEERING.
  11. 3566R IS REVERSED, WITH SOCKETS ON THE HEX (ATMOSPHERE) SIDE AND PINS ON THE THREAD (VACUUM) SIDE

9	2	M85049/38-17N	STRAIN RELIEF 999 17
8	1	SEE TABLE	PLUG 55#22
7	1	SEE TABLE	PLUG 55#22
6	1	SEE TABLE	RCPT 55#22 SOC
5	1	SEE TABLE	RCPT 55#22 PIN
4	A/R	PAVE-Seal 150	EPOXY BLACK
3	1	-226 VITON	O-RING -226 VITON 75
2	1	0185	NUT VS26-SS
1	1	1531	HOUSING VS26-SS
ITEM	QTY	PART#	DESCRIPTION

ALL DIMENSIONS AND TOLERANCES APPLY TO FINISHED PART IN INCHES  
ALLOWABLE TOLERANCES UNLESS SPECIFIED OTHERWISE: NONE +/-0.5  
.X DECIMAL +/- 0.1 .XX DECIMAL +/- 0.02 .XXX DECIMAL +/-0.005  
ANGLES +/- 1 DEG SURFACE FINISH 128 microinch RMS



DESCRIPTION PAVE-Mate I Connectors  
**VS26-SS-150-55-22-99920PS**

PART NUMBER \*SEE TABLE & NOTES 6 & 11  
**3566\***

REVISION LEVEL **B**  
PROJECTION