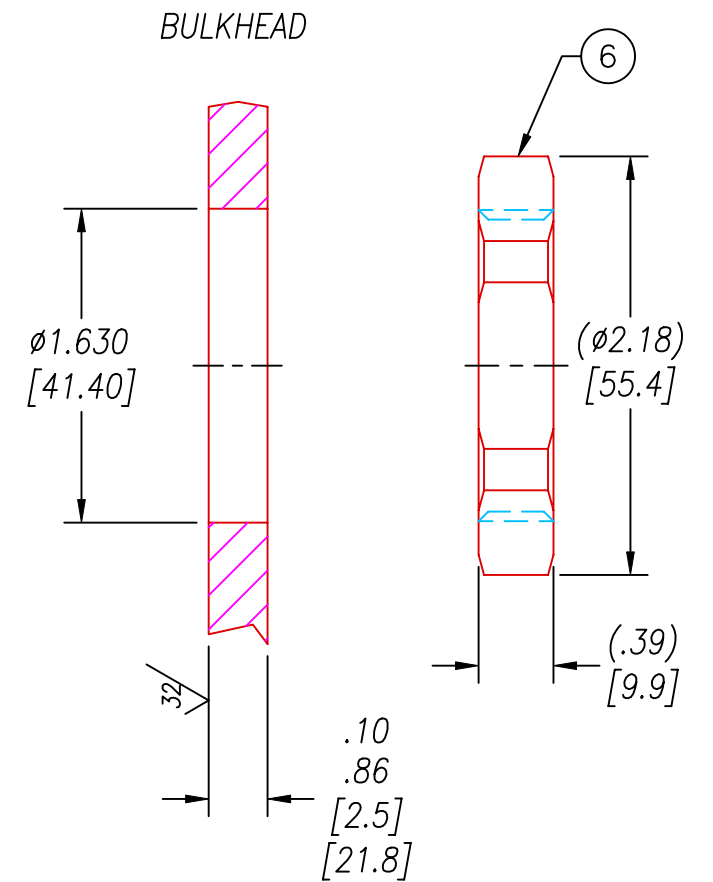
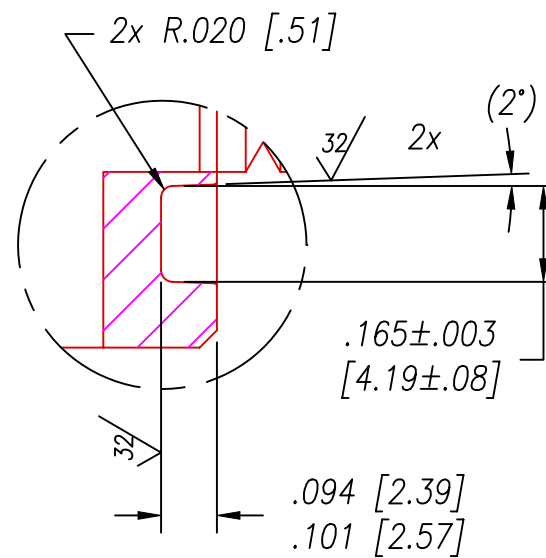


DETAIL A  
O-RING GROOVE  
SCALE: 1=3



NOTES:

1. LEAK TEST: 220 PSI N<sub>2</sub>, NO BUBBLES 30 SECONDS MINIMUM.
2. QUALIFICATION ONLY: 220 PSI N<sub>2</sub>, NO BUBBLES 1 MINUTE MINIMUM, AFTER HEATING LEAK TEST PORT & ASSEMBLY TO 150°C.
3. HYPOT 630 VDC 500 MΩ 0.01 SEC MINIMUM, PIN TO PIN & THREADED INSERT WITH MATING CONNECTORS.
4. CONTINUITY TEST <.5 Ω PIN TO SOCKET WITH MATING CONNECTORS.
5. ALL TESTS ARE PERFORMED AT ROOM TEMPERATURE.
7. ALL PARTS MUST PASS ALL TESTS.
7. NO VOIDS ARE ACCEPTABLE ON O-RING SEALING SURFACES, VOIDS SMALLER THAN ø.035 [.89] ARE ACCEPTABLE ON ALL OTHER SURFACES.
8. REF-OPERATING TEMPERATURE RANGE -40°C TO 150°C.
9. DIMENSIONS ARE INCHES [millimeters].

6	1	0199	NUT VS22-SS (316SS)
5	1	-224 VITON LT	O-RING -224 VITON 75 LT
4	1	SC3112E22-55S	RCPT 55#20 ELCTROLESS NICKEL PLATED SOC
3	1	771L22-55P	RCPT 55#20 EPOXY INSERT PIN
2	A/R	PAVE-Seal 200	EPOXY BLACK
1	1	0225	THREAD INSERT VS22-SS
ITEM	QTY	PART#	DESCRIPTION

**PAVE technology co.**  
 2751 Thunderhawk Court  
 Dayton, Ohio 45414-3445  
 U.S.A.  
 (937)890-1100  
 fax (937)890-5165  
 www.pavetechnologyco.com

DESCRIPTION **PAVE-Mate® I Connectors**  
**VS22-E-200-55-20-3112PS (NP)**  
 PART NUMBER **3613**  
 REVISION LEVEL **A**  
 PROJECTION

ALL DIMENSIONS AND TOLERANCES APPLY TO FINISHED PART IN INCHES  
 ALLOWABLE TOLERANCES UNLESS SPECIFIED OTHERWISE: NONE +/-0.5  
 .X DECIMAL +/- 0.1 .XX DECIMAL +/- 0.02 .XXX DECIMAL +/-0.005  
 ANGLES +/- 1 DEG SURFACE FINISH 128 microinch RMS