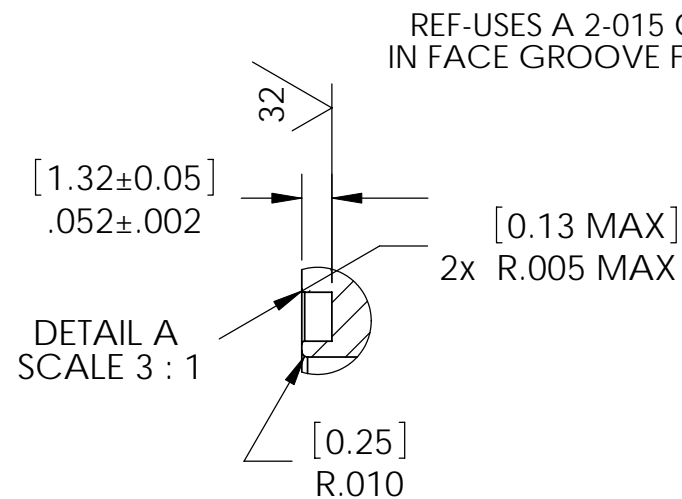
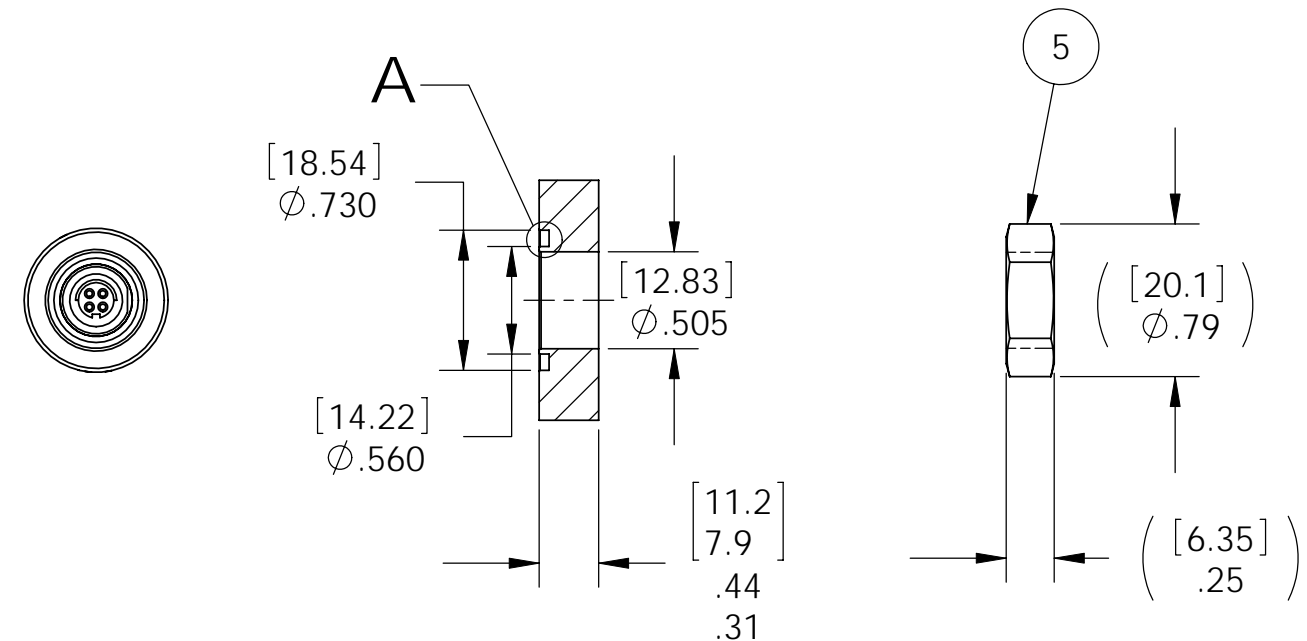


VS8SX INSTALLATION PORT



NOTES:

1. HE LEAK TEST VACUUM 10×10^{-7} CC/SEC OR LESS. LEAK TEST IS PERFORMED USING A -015 VITON O-RING, NOT SUPPLIED.
2. HYPOT 500 VDC 100 MΩ 0.01 SECOND MINIMUM, WIRE TO WIRE AND HOUSING WITH MATING CONNECTOR.
3. CONTINUITY TEST $<.5 \Omega$ SOCKET TO WIRE END WITH MATING CONNECTOR.
4. ALL TESTS ARE PERFORMED AT ROOM TEMPERATURE.
5. ALL PARTS MUST PASS ALL TESTS.
6. VOIDS LARGER THAN $\phi 0.035$ [.89] ARE NOT ACCEPTABLE.
7. REF-OPERATING TEMPERATURE RANGE -20°C TO 125°C .
8. DIMENSIONS ARE INCHES [millimeters].

ITEM	QTY	PART NUMBER	DESCRIPTION
5	1	0894	NUT VS8-SS
4	4	TZ24 BLACK	WIRE 24TZ XL MIL 22759/32-24-0 19/#36
3	1	DG A102A053-130	RCPT FISCHER 4 SOC
2	A/R	PAVE-Seal 150	EPOXY BLACK
1	1	2945	HOUSING VS8SX-SS

PAVE technology co.
 2751 Thunderhawk Court
 Dayton, OH 45414-3445
 U.S.A.
 tel (937) 890-1100
 fax (937) 8905165
 www.pavetechnologyco.com

DESCRIPTION VS8SX-SS-150-4-TZ24-6- QD	
PART NUMBER 3807	MATERIAL NOTED
REVISION LEVEL -	PROJECTION

ALL DIMENSIONS AND TOLERANCES APPLY TO FINISHED PART IN INCHES.
 ALLOWABLE TOLERANCES UNLESS SPECIFIED OTHERWISE: NONE ± 0.5
 X.X DECIMAL ± 0.1 X.XX DECIMAL ± 0.02 X.XXX DECIMAL ± 0.005
 ANGLES ± 1 DEGREE SURFACE FINISH 128 microinch RMS