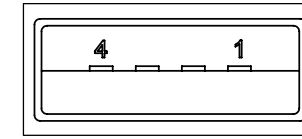


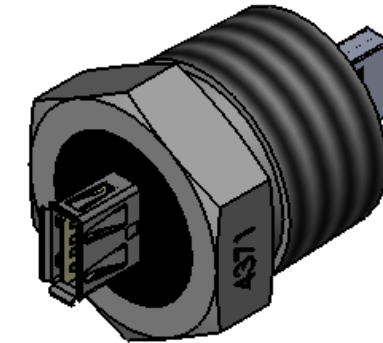
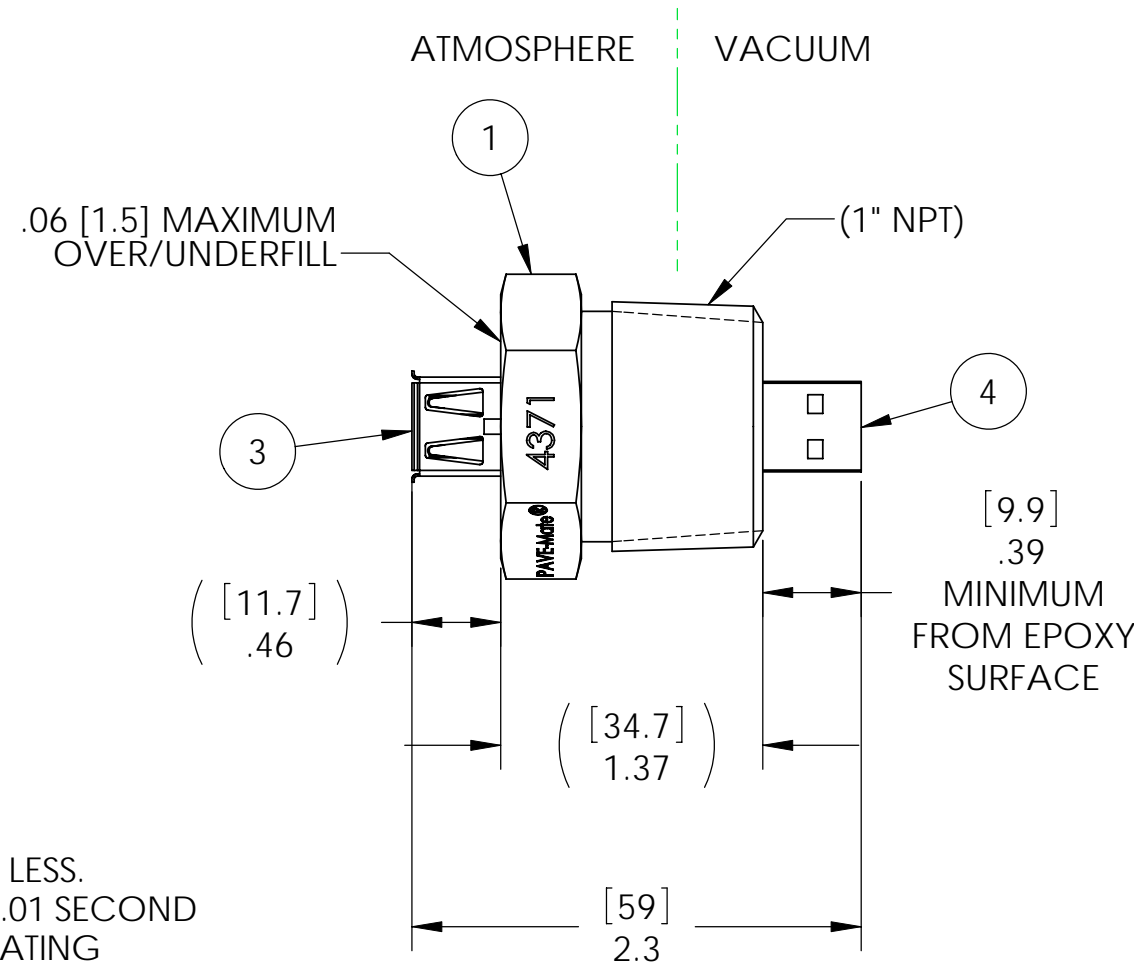
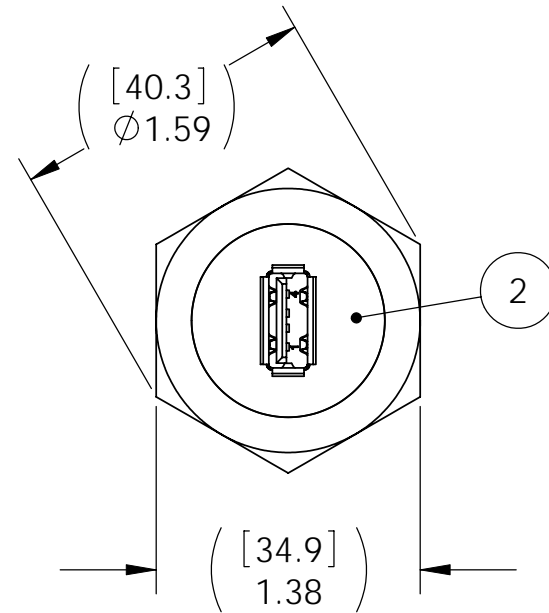
ATMOSPHERE / FEMALE
PIN LOCATION
SCALE: 3:1

| ATMOSPHERE | VACUUM |
|------------|--------|
| PIN1 | PIN1 |
| PIN2 | PIN2 |
| PIN3 | PIN3 |
| PIN4 | PIN4 |

PIN-OUT CHART



VACUUM / MALE
PIN LOCATION
SCALE: 3:1



NOTES:

1. HE LEAK TEST @ 1 ATM 10X10⁻⁷ CC/SEC OR LESS.
2. HYPOT 630 VDC 500 MEGOHMS MINIMUM 0.01 SECOND MINIMUM PIN TO PIN AND HOUSING WITH MATING CONNECTORS.
3. CONTINUITY CHECK <.5Ω PIN TO PIN PER CHART.
4. ALL TESTS ARE PERFORMED AT ROOM TEMPERATURE.
5. ALL PARTS MUST PASS ALL TESTS.
6. VOIDS LARGER THAN Ø.035 [.89] ARE NOT ACCEPTABLE.
7. REF-OPERATING TEMPERATURE RANGE OF USB CONNECTORS (ITEMS 3 AND 4) -55 °C TO 85 °C.
8. REF-OPERATING TEMPERATURE RANGE OF SEAL -20 °C TO 125 °C.
9. DIMENSIONS ARE INCHES [millimeters].
10. PAVE-SEAL CAN BE A BI-DIRECTIONAL HERMETIC SEAL FOR VACUUM AND MOST PRESSURES. FOR PRESSURES ABOVE 150 PSI (10 BAR), CHECK WITH SALES ENGINEERING.

| ITEM | QTY | PART NUMBER | DESCRIPTION |
|------|-----|--------------------|------------------------------------|
| 4 | 1 | KUSBX-SMT2AP1S-B30 | PLUG USB A-TYPE SMT 4 POS 30u" Au |
| 3 | 1 | KUSBVX-AS-1-N-B30 | RCPT USB A-TYPE PCBV 4 POS 30u" Au |
| 2 | A/R | PAVE-Seal 150 | EPOXY BLACK |
| 1 | 1 | 1625 | HOUSING PT16-SS |

ALL DIMENSIONS AND TOLERANCES APPLY TO FINISHED PART IN INCHES.
ALLOWABLE TOLERANCES UNLESS SPECIFIED OTHERWISE: NONE ±0.5
X.X DECIMAL ±0.1 X.XX DECIMAL ±0.02 X.XXX DECIMAL ±0.005
ANGLES ±1 DEGREE SURFACE FINISH 128 microinch RMS

PAVE technology co.
2751 Thunderhawk Court
Dayton, OH 45414-3445
U.S.A.
tel (937) 890-1100
fax (937) 8905165
www.pavetechnologyco.com

DESCRIPTION
PT16-SS-150-1-USBAfemale-USBAmale

PART NUMBER
4371

MATERIAL NOTED

REVISION LEVEL -

PROJECTION