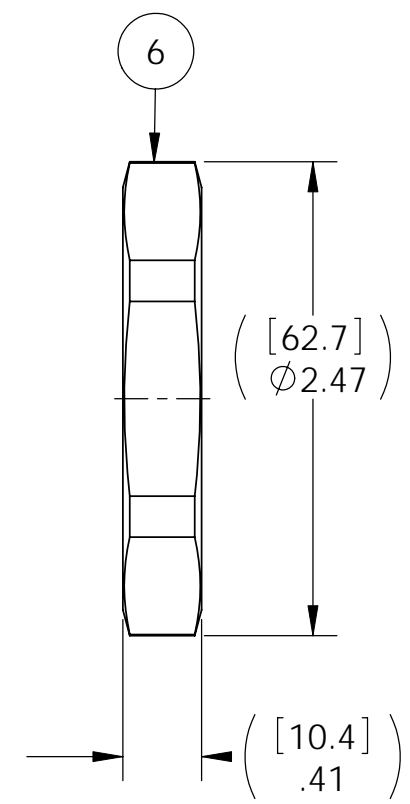
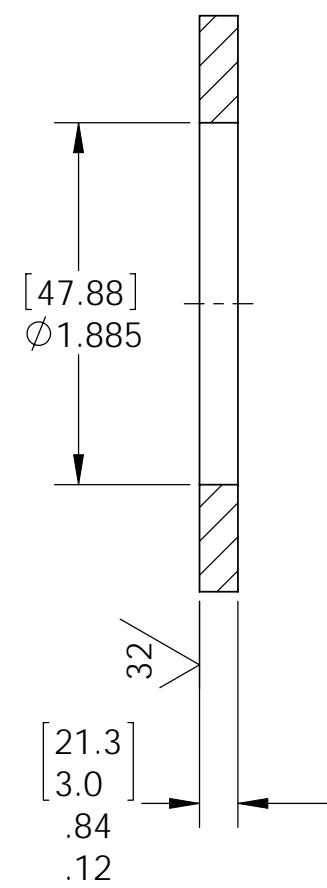


VS26 INSTALLATION PORT



NOTES:

1. HE LEAK TEST VACUUM 10X10<sup>-7</sup> CC/SEC OR LESS.
2. HYPOT 630 VDC 500 MEGOHMS MINIMUM 0.01 SECOND MINIMUM PIN TO PIN AND HOUSING WITH MATING CONNECTORS.
3. CONTINUITY TEST <0.5 OHM PIN TO SOCKET WITH MATING CONNECTORS.
4. ALL TESTS ARE PERFORMED AT ROOM TEMPERATURE.
5. ALL PARTS MUST PASS ALL TESTS.
6. COSMETIC SURFACE VOIDS SMALLER THAN Ø0.035 [.89] ARE ACCEPTABLE.
7. REF-OPERATING TEMPERATURE -20°C TO 125°C.
8. DIMENSIONS ARE INCHES [millimeters].
9. PAVE-SEAL CAN BE A BI-DIRECTIONAL HERMETIC SEAL FOR VACUUM AND MOST PRESSURES. FOR PRESSURES ABOVE 150 PSI (10 BAR), CHECK WITH SALES ENGINEERING.
10. ALCOHOL OR FOMBLIN YVAC 3 MAY BE USED TO LUBE O-RINGS FOR VACUUM HELIUM LEAK TESTING.

ITEM	QTY	PART NUMBER	DESCRIPTION
6	1	0185	NUT VS26-SS
5	1	-226 VITON	O-RING -226 VITON 75
4	1	MS27472E14F-35S	RCPT 37#22 SOC ELECTROLESS NICKEL PLATED
3	1	MS27473E14F-35P	PLUG 37#22 PIN ELECTROLESS NICKEL PLATED
2	A/R	PAVE-Seal 150	EPOXY BLACK
1	1	1531	HOUSING VS26-SS

ALL DIMENSIONS AND TOLERANCES APPLY TO FINISHED PART IN INCHES.  
 ALLOWABLE TOLERANCES UNLESS SPECIFIED OTHERWISE: NONE ±0.5  
 X.X DECIMAL ±0.1 X.XX DECIMAL ±0.02 X.XXX DECIMAL ±0.005  
 ANGLES ±1 DEGREE SURFACE FINISH 128 microinch RMS

**PAVE technology co.**  
 2751 Thunderhawk Court  
 Dayton, OH 45414-3445  
 U.S.A.  
 tel (937) 890-1100  
 fax (937) 8905165  
 www.pavetechnologyco.com

DESCRIPTION  
 VS26-SS-150-37-22-27472PS

PART NUMBER  
**4464**

MATERIAL NOTED

REVISION LEVEL -

PROJECTION