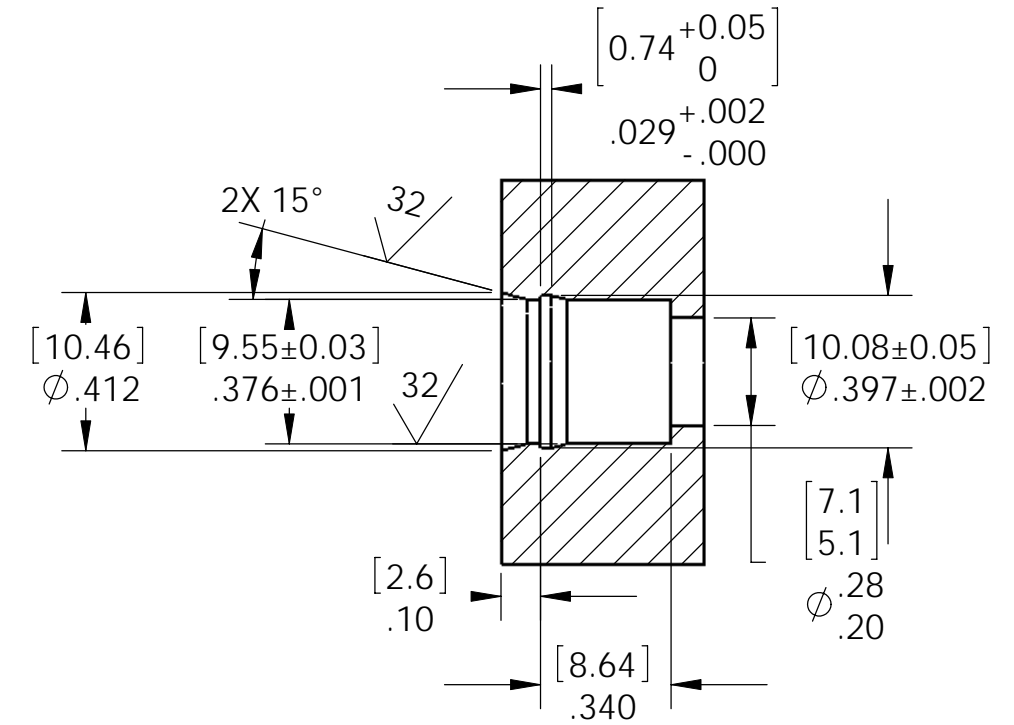
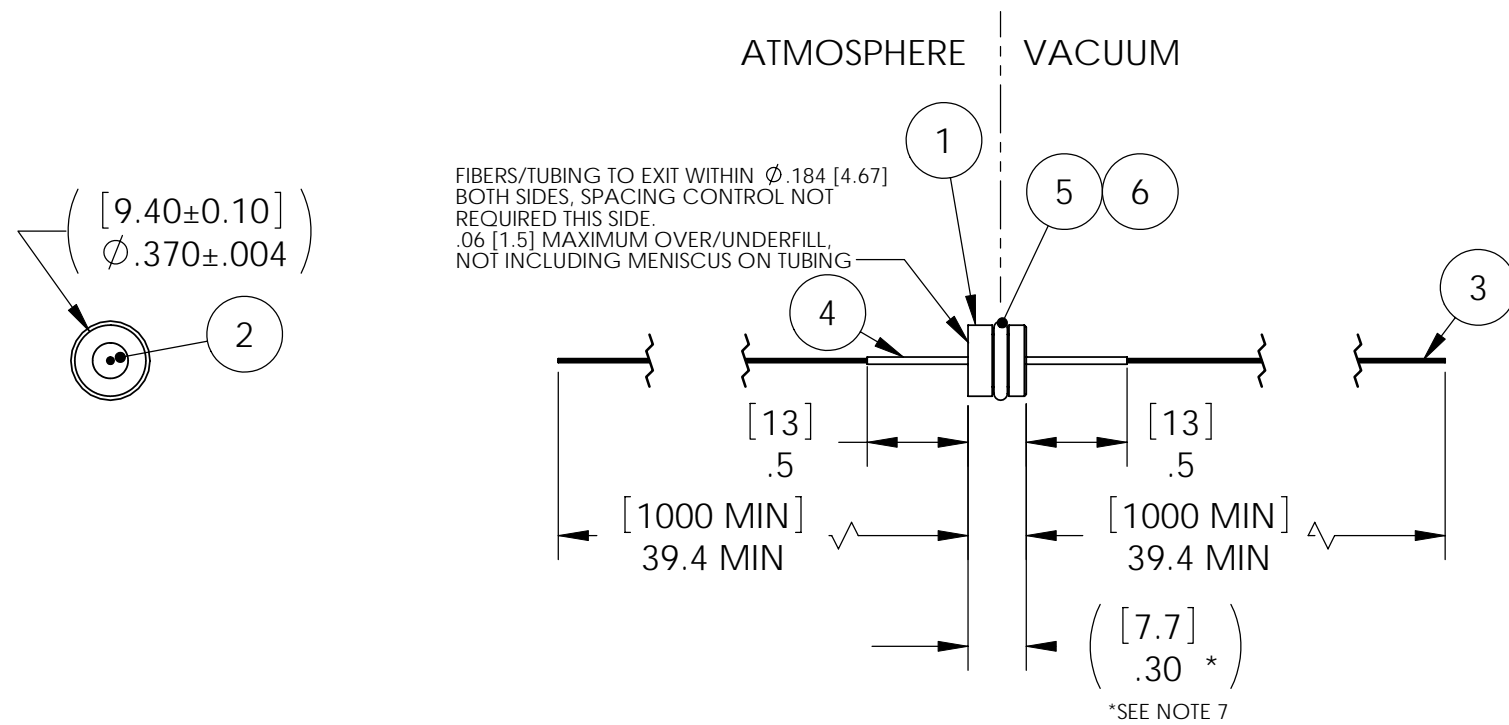


SP6 INSTALLATION PORT
SCALE: 2:1



NOTES:

1. HE LEAK TEST VACUUM 10×10^{-7} CC/SEC OR LESS.
2. CONTINUITY TEST: OPTICAL CONTINUITY USING RED LASER.
3. ALL TESTS ARE PERFORMED AT ROOM TEMPERATURE.
4. ALL PARTS MUST PASS ALL TESTS.
5. FIBER POSITIONING IS APPROXIMATE & VARIABLE.
6. NO COSMETIC SURFACE VOIDS ARE ACCEPTABLE ON O-RING SEALING SURFACES, COSMETIC SURFACE VOIDS SMALLER THAN $\phi 0.035$ [.89] ARE ACCEPTABLE ON ALL OTHER SURFACES.
7. DIMENSION IS OVER-ALL-LENGTH EXCLUDING OVERFILL ON ATMOSPHERE SIDE OF HOUSING.
8. REF-OPERATING TEMPERATURE -20°C TO 125°C .
9. REF-PARTS ARE DEFLASHED ON PARTING LINE $+0.001$ [.03] MAXIMUM.
10. PAVE-SEAL CAN BE A BI-DIRECTIONAL HERMETIC SEAL FOR VACUUM AND MOST PRESSURES. FOR PRESSURES ABOVE 150 PSI (10 BAR), CHECK WITH SALES ENGINEERING.
11. DIMENSIONS ARE INCHES [millimeters].

6	A/R	FOMBLIN YVAC 3	LUBRICANT O-RING FOMBLIN GREASE
5	1	-010 VITON	O-RING -010 VITON 75
4	2	PTFE 23	TUBING .026 ID X .038 OD PTFE
3	2	SMF-28E+FIBER	FIBER OPTIC SINGLE MODE 28e+FIBER
2	A/R	PAVE-Seal 150	EPOXY BLACK
1	1	0168	HOUSING SP6-E
ITEM	QTY	PART NUMBER	DESCRIPTION

ALL DIMENSIONS AND TOLERANCES APPLY TO FINISHED PART IN INCHES.
ALLOWABLE TOLERANCES UNLESS SPECIFIED OTHERWISE: NONE ± 0.5
X.X DECIMAL ± 0.1 X.XX DECIMAL ± 0.02 X.XXX DECIMAL ± 0.005
ANGLES ± 1 DEGREE SURFACE FINISH 128 microinch RMS

PAVE technology co.
2751 Thunderhawk Court
Dayton, OH 45414-3445
U.S.A.
tel (937) 890-1100
fax (937) 8905165
www.pavetechnologyco.com

DESCRIPTION
SP6-E-150-2-SMF28E-1M-1M

PART NUMBER
4508

MATERIAL NOTED

REVISION LEVEL -

PROJECTION