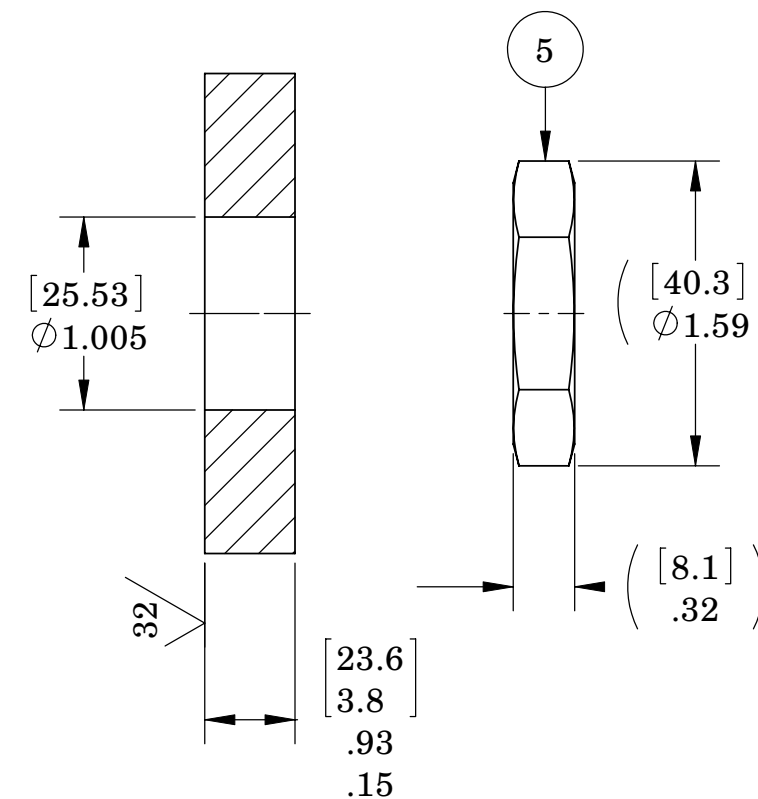


VS15L INSTALLATION PORT



NOTES:

1. HELIUM LEAK TEST VACUUM 10×10^{-7} CC/SEC OR LESS.
2. HYPOT 630 VDC 500 MEG OHMS MINIMUM 0.01 SECOND MINIMUM WIRE TO WIRE AND HOUSING.
3. ALL TESTS ARE PERFORMED AT ROOM TEMPERATURE.
4. ALL PARTS MUST PASS ALL TESTS.
5. WIRE POSITIONING IS APPROXIMATE & VARIABLE.
6. VOIDS SMALLER THAN $\phi 0.035$ [0.89] ARE ACCEPTABLE.
7. REF-OPERATING TEMPERATURE -20°C TO 125°C .
8. PAVE-SEAL CAN BE A BIDIRECTIONAL HERMETIC SEAL FOR VACUUM AND MOST PRESSURES. FOR PRESSURES ABOVE 150 PSI (10 BAR), CHECK WITH SALES ENGINEERING.
9. DIMENSIONS ARE INCHES [millimeters].
10. ALCOHOL OR FORMBLIN VAC 3 MAY BE USED TO LUBEO-RINGS FOR VACUUM HELIUM LEAK TESTING.

5	1	0183	NUT VS15-SS
4	1	-215 VITON	O-RING -215 VITON 75
3	A/R	PAVE-Seal 150	EPOXY BLACK
2	12	KI24	CABLE T/C TYPE K24AWG TEFLO N
1	1	0161	HOUSING VS15L-SS
ITEM	QTY	PART NUMBER	DESCRIPTION

PAVE technology co.
 2751 Thunderhawk Court
 Dayton, OH 45414-3445
 U.S.A.
 tel (937) 890-1100
 fax (937) 8905165
 www.pave technology co.com

DESCRIPTION
 VS15L-SS-150-12P-KI24-300mm-300mm

PART NUMBER
4524

MATERIAL NOTED

REVISION LEVEL -

PROJECTION

ALL DIMENSIONS AND TOLERANCES APPLY TO FINISHED PART IN INCHES.
 ALLOWABLE TOLERANCES UNLESS SPECIFIED OTHERWISE: NONE ± 0.5
 X.X DECIMAL ± 0.1 X.XX DECIMAL ± 0.02 X.XXX DECIMAL ± 0.005
 ANGLES ± 1 DEGREE SURFACE FINISH 128 microinch RMS