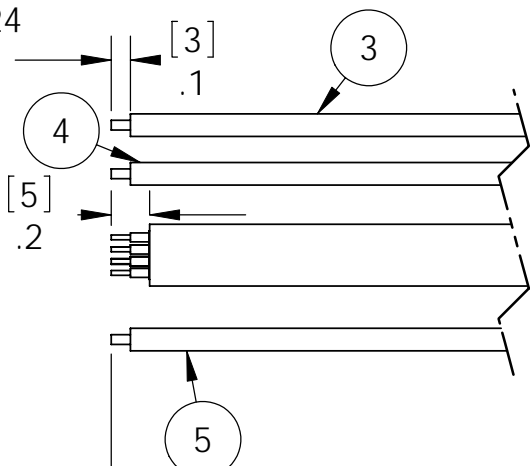
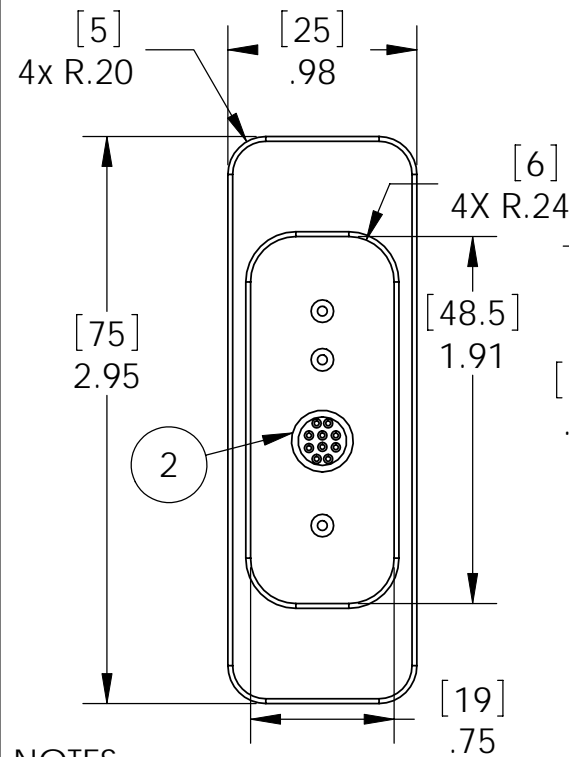
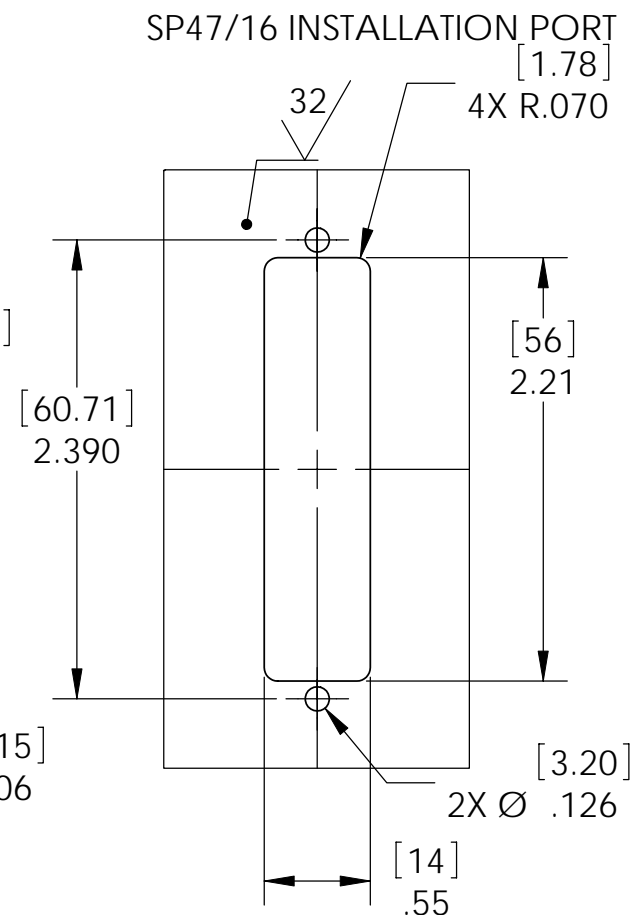
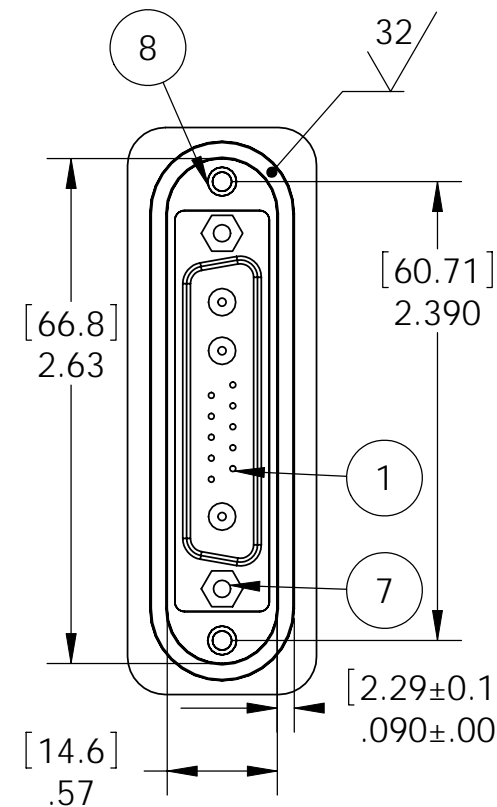
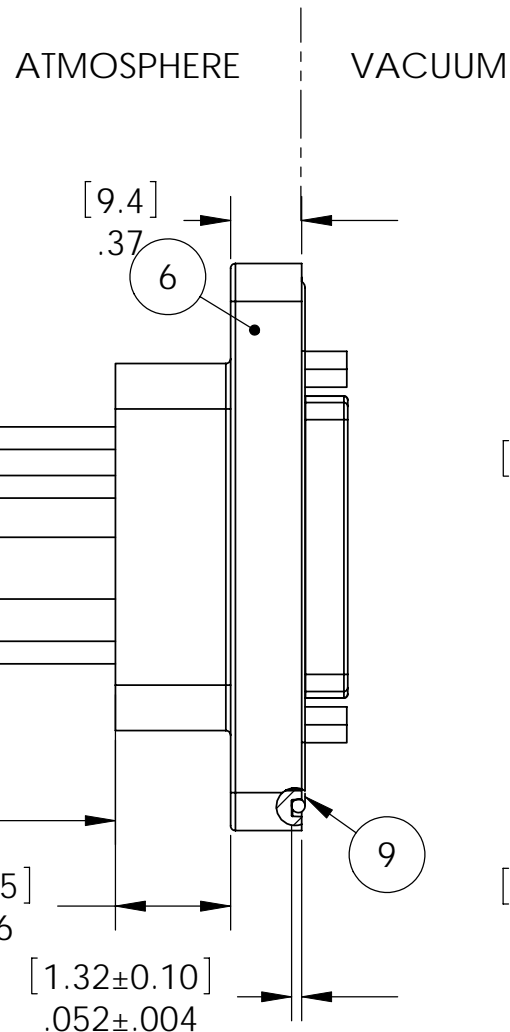


PIN #	ITEM #	COLOR
A1	5	RED
A2	4	WHITE
A3	3	BLACK

PIN #	COLOR WIRE	TWISTED PAIR
1	GREEN	BLACK/GREEN
2	BLUE	BLACK/BLUE
3	BLACK	BLACK/BLUE
4	RED	BLACK/RED
5	BLACK	BLACK/RED
6	BLACK	BLACK/GREEN
7	YELLOW	BLACK/YELLOW
8	BLACK	BLACK/YELLOW
9	WHITE	BLACK/WHITE
10	BLACK	BLACK/WHITE



[1000 MIN]
39.4 MIN



REF- TWO M3X.5 SCREWS
USED FOR INSTALLATION

NOTES:

- HE LEAK TEST @ 1 ATM. 10X10⁻⁷ CC/SEC OR LESS.
- HYPOT 630 VDC 500 MEGOHMS MINIMUM 0.01 SECOND MINIMUM PIN TO WIRE.
- CONTINUITY TEST <.5OHMS MATING PIN TO END OF WIRES.
- ALL TESTS ARE PERFORMED AT ROOM TEMPERATURE.
- ALL PARTS MUST PASS ALL TESTS.
- WIRE/CABLE POSITIONING IS APPROXIMATE & VARIABLE.
- NO COSMETIC SURFACE VOIDS ARE ACCEPTABLE ON O-RING SEALING SURFACES, COSMETIC SURFACE VOIDS SMALLER THAN $\phi 0.035$ [.89] ARE ACCEPTABLE ON ALL OTHER SURFACES.
- REF-OPERATING TEMPERATURE -20 °C TO 80 °C.
- PAVE-SEAL CAN BE A BI-DIRECTIONAL HERMETIC SEAL FOR VACUUM AND MOST PRESSURES. FOR PRESSURES ABOVE 150 PSI (10 BAR), CHECK WITH SALES ENGINEERING.
- DIMENSIONS ARE INCHES [millimeters].
- ALCOHOL OR FOMBLIN YVAC 3 MAY BE USED TO LUBE O-RINGS FOR VACUUM HELIUM LEAK TESTING.

9	1	-032 VITON	O-RING -032 VITON 75
8	2	YARDLEY3005A5-8	THREAD INSERT SS M3X.5
7	2	JACKPOST 4-40	"P" STYLE 4-40 UNC
6	1	PAVE-Seal 150	EPOXY BLACK
5	1	PC16 600V RED	WIRE 16PVC UL1015 .031 26/#30 BELDEN 8917=
4	1	PC16 600V WHT	WIRE 16PVC UL1015 .031 26/#30 BELDEN 8917=
3	1	PC16 600V BLK	WIRE 16PVC UL1015 .031 26/#30 BELDEN 8917=
2	1	BELDEN 8305	CABLE 22 AWG PVC INSULATION, 5 TWISTED PAIRS, PVC JACKET
1	1	680M13W3103L201	PLUG D-SUB COMBO 10 PIN 20 AWG & 3 PIN 8 AWG, NICKEL SHELL AND GOLD FLASH PINS
ITEM	QTY	PART NUMBER	DESCRIPTION

ALL DIMENSIONS AND TOLERANCES APPLY TO FINISHED PART IN INCHES.
ALLOWABLE TOLERANCES UNLESS SPECIFIED OTHERWISE: NONE ±0.5
X.X DECIMAL ±0.1 X.XX DECIMAL ±0.02 X.XXX DECIMAL ±0.005
ANGLES ±1 DEGREE SURFACE FINISH 128 microinch RMS

PAVE technology co.
2751 Thunderhawk Court
Dayton, OH 45414-3445
U.S.A.
tel (937) 890-1100
fax (937) 8905165
www.pavetechnologyco.com

DESCRIPTION	SP47/16-E-150-10/3-BELDEN8305/PC16-39-DSUB	
PART NUMBER	4625	MATERIAL NOTED
REVISION LEVEL	A	PROJECTION