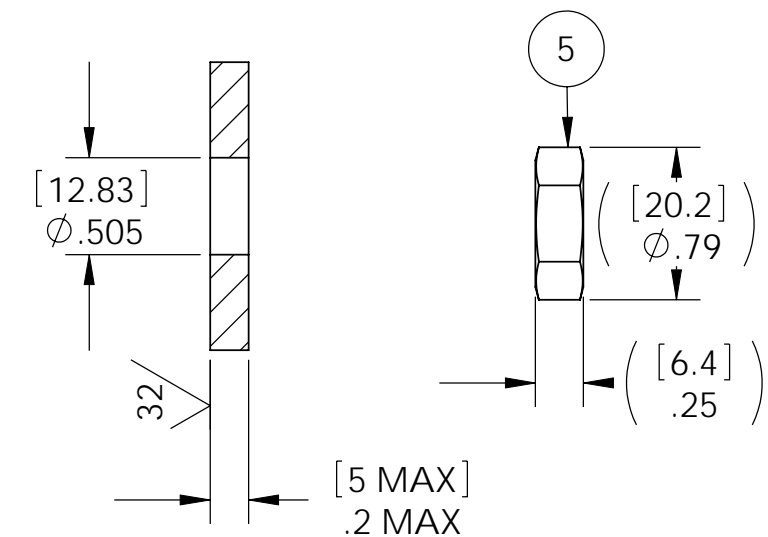


VS8 INSTALLATION PORT



NOTES:

1. HE LEAK TEST @ 1 ATM.  $1 \times 10^{-6}$  CC/SEC OR LESS. A GREEN PAINT DOT INDICATES THE PART HAS PASSED THE TEST.
2. HYPOT 630 VDC 500 MEGOHMS MINIMUM 0.01 SECOND MINIMUM WIRE TO WIRE AND HOUSING.
3. ALCOHOL OR FOMBLIN YVAC 3 MAY BE USED TO LUBRICATE O-RINGS FOR VACUUM HELIUM LEAK TESTING.
4. ALL TESTS ARE PERFORMED AT ROOM TEMPERATURE.
5. ALL PARTS MUST PASS ALL TESTS.
6. WIRE POSITIONING IS APPROXIMATE & VARIABLE.
7. COSMETIC SURFACE VOIDS SMALLER THAN  $\phi 0.035$  [0.89] ARE ACCEPTABLE.
8. REF-OPERATING TEMPERATURE  $-20^{\circ}\text{C}$  TO  $125^{\circ}\text{C}$ .
9. DIMENSIONS ARE INCHES [millimeters].
10. PAVE-SEAL CAN BE A BI-DIRECTIONAL HERMETIC SEAL FOR VACUUM AND MOST PRESSURES. FOR PRESSURES ABOVE 150 PSI (10 BAR), CHECK WITH SALES ENGINEERING.

5	1	0894	NUT VS8-SS
4	1	-112 VITON	O-RING -112 VITON 75
3	1	KK-K-20-25	WIRE THERMOCOUPLE #20 KAPTON INSULATED
2	A/R	PAVE-Seal 150	EPOXY BLACK
1	1	0892	HOUSING VS8-SS
ITEM	QTY	PART NUMBER	DESCRIPTION

**PAVE technology co.**

2751 Thunderhawk Court  
Dayton, OH 45414-3445  
U.S.A.  
tel (937) 890-1100  
fax (937) 8905165  
www.pavetechnologyco.com

DESCRIPTION  
VS8-SS-150-1P-KK20-12-100

PART NUMBER  
**4816**

MATERIAL  
NOTED

REVISION LEVEL  
-

PROJECTION

ALL DIMENSIONS AND TOLERANCES APPLY TO FINISHED PART IN INCHES.  
ALLOWABLE TOLERANCES UNLESS SPECIFIED OTHERWISE: NONE  $\pm 0.5$   
X.X DECIMAL  $\pm 0.1$  X.XX DECIMAL  $\pm 0.02$  X.XXX DECIMAL  $\pm 0.005$   
ANGLES  $\pm 1$  DEGREE SURFACE FINISH 128 microinch RMS