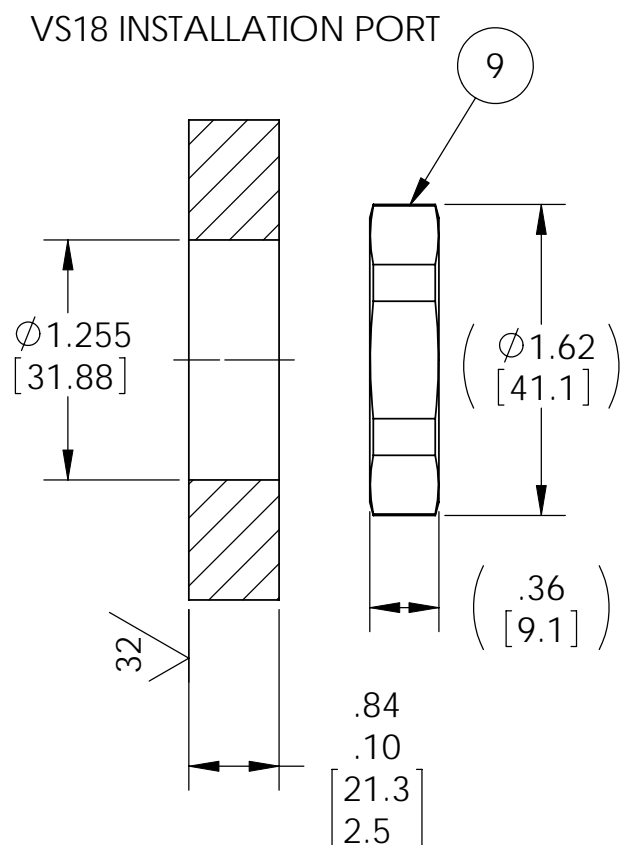
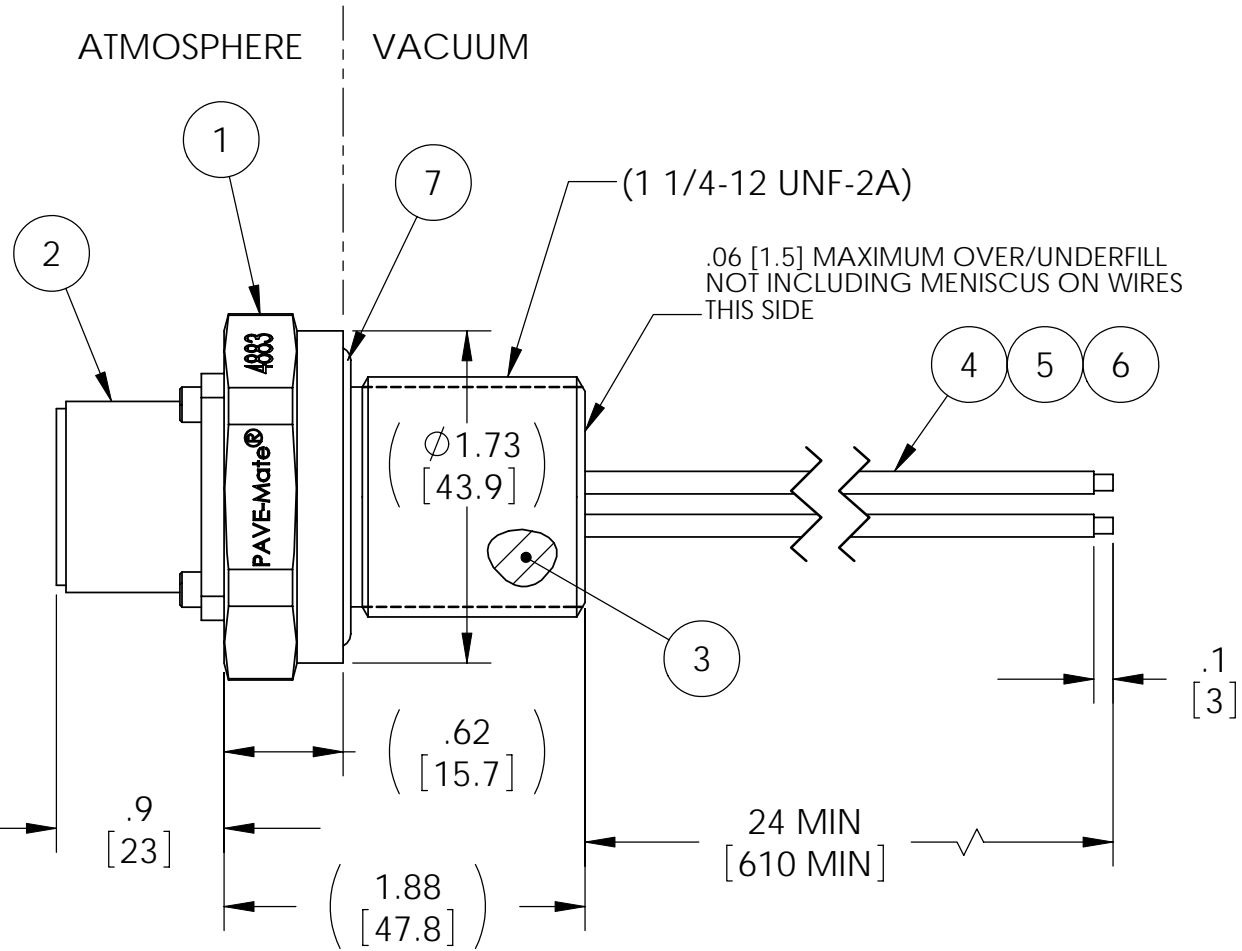
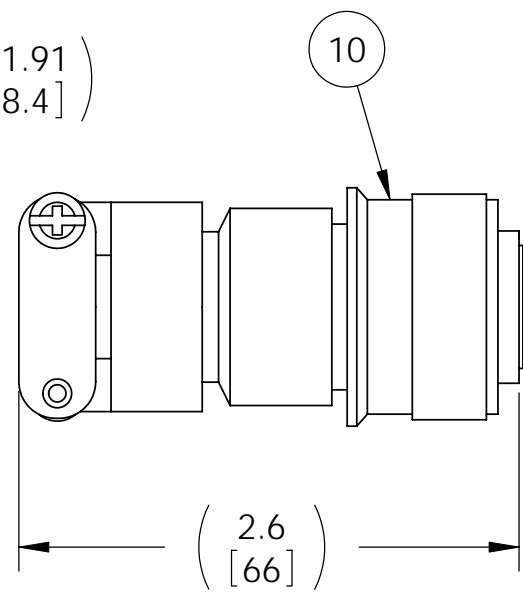
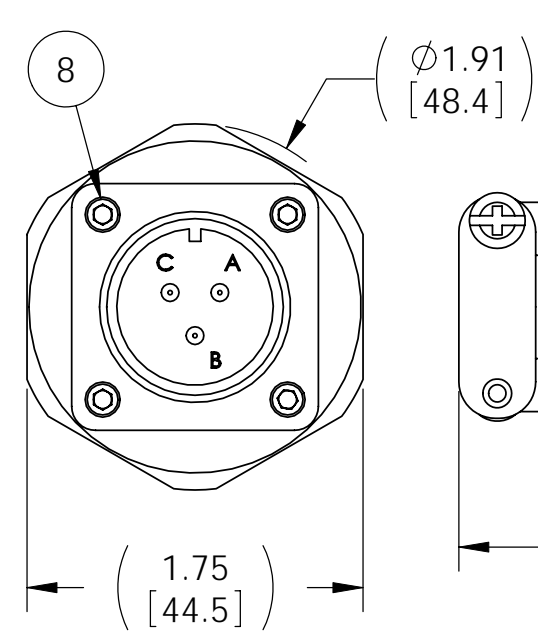


PIN-OUT TABLE	
ITEM#	POSITION
4 (BLACK)	A
5 (WHITE)	B
6 (GREEN)	C



**NOTES:**

- HE LEAK TEST @ 1 ATM. 1X10<sup>-7</sup> CC/SEC OR LESS. A GREEN PAINT DOT INDICATES THE PART HAS PASSED THE TEST.
- HYPOT 1000 VDC 500 MEGOHMS MINIMUM 0.01 SECOND MINIMUM WIRE TO WIRE AND HOUSING WITH MATING CONNECTOR.
- CONTINUITY TEST MATING CONNECTOR TO WIRE ENDS <1 OHM.
- ALL TESTS ARE PERFORMED AT ROOM TEMPERATURE.
- ALL PARTS MUST PASS ALL TESTS.
- VOIDS SMALLER THAN  $\phi 0.035$  [0.89] ARE ACCEPTABLE.
- REF-OPERATING TEMPERATURE RANGE -20°C TO 125°C.
- ALCOHOL OR FOMBLIN YVAC 3 MAY BE USED TO LUBRICATE O-RINGS FOR VACUUM HELIUM LEAK TESTING.
- DIMENSIONS ARE INCHES [millimeters].
- PAVE-SEAL CAN BE A BI-DIRECTIONAL HERMETIC SEAL FOR VACUUM AND MOST PRESSURES. FOR PRESSURES ABOVE 150 PSI (10 BAR), CHECK WITH SALES ENGINEERING.

ITEM	QTY	PART NUMBER	DESCRIPTION
10	1	SCP06DM16-10S	PLUG 3#12 SOC SILVER PLATED COPPER ALLOY CONTACTS NICKEL PLATED ALUMINUM SHELL WITH STRAIN RELIEF
9	1	1014	NUT VS18-SS
8	4	4-40X.3125 SHCS	SCREW SHCS 4-40X.3125-SS
7	1	-219 VITON	O-RING -219 VITON 75
6	1	E12 GREEN	WIRE 12E MIL-W-16878/4 .013 19/#25
5	1	E12 WHITE	WIRE 12E MIL-W-16878/4 .013 19/#25
4	1	E12 BLACK	WIRE 12E MIL-W-16878/4 .013 19/#25
3	A/R	PAVE-Seal 150	EPOXY BLACK
2	1	SCP02ZM16-10P	RCPT 3#12 PIN SILVER PLATED COPPER ALLOY CONTACTS NICKEL PLATED ALUMINUM SHELL
1	1	3324	HOUSING VS18-SS

ALL DIMENSIONS AND TOLERANCES APPLY TO FINISHED PART IN INCHES.  
 ALLOWABLE TOLERANCES UNLESS SPECIFIED OTHERWISE: NONE ±0.5  
 X.X DECIMAL ±0.1 X.XX DECIMAL ±0.02 X.XXX DECIMAL ±0.005  
 ANGLES ±1 DEGREE SURFACE FINISH 128 microinch RMS

**PAVE technology co.**  
 2751 Thunderhawk Court  
 Dayton, OH 45414-3445  
 U.S.A.  
 tel (937) 890-1100  
 fax (937) 8905165  
 www.pavetechnologyco.com

DESCRIPTION  
 VS18-SS-150-3-TE12-3102P-24

PART NUMBER  
**4883**

MATERIAL NOTED

REVISION LEVEL -

PROJECTION