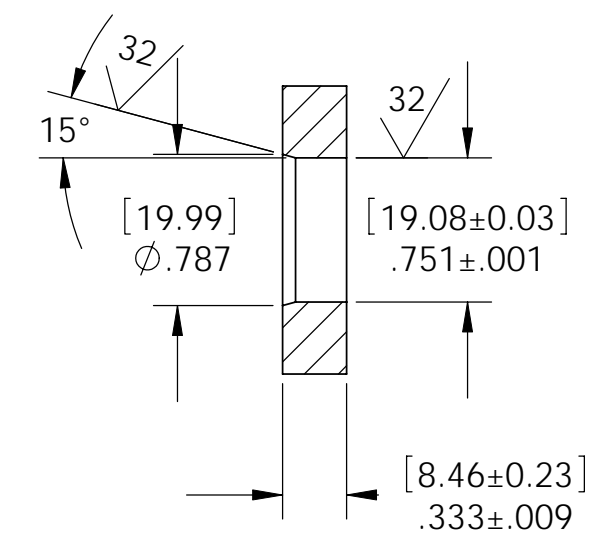


SPF12 INSTALLATION PORT



RECOMMENDED RETAINING RING
TRUARC #5100-75 OR EQUAL

NOTES:

1. LEAK TEST: 300 PSI, NO BUBBLES 15 SECONDS MINIMUM. A GREEN PAINT DOT INDICATES THE PART HAS PASSED THE TEST.
2. HYPOT 630 VDC 500 MEGOHMS MINIMUM 0.01 SECOND MINIMUM WIRE TO WIRE.
3. ALL TESTS ARE PERFORMED AT ROOM TEMPERATURE.
4. ALL PARTS MUST PASS ALL TESTS.
5. WIRE POSITIONING IS APPROXIMATE & VARIABLE.
6. NO COSMETIC SURFACE VOIDS ARE ACCEPTABLE ON O-RING SEALING SURFACES, COSMETIC SURFACE VOIDS SMALLER THAN $\phi 0.035$ [0.89] ARE ACCEPTABLE ON ALL OTHER SURFACES.
7. DIMENSION IS OVER-ALL-LENGTH EXCLUDING OVERFILL ON PRESSURE SIDE OF HOUSING.
8. REF-OPERATING TEMPERATURE -20°C TO 80°C.
9. REF-PARTS ARE DEFLASHED ON PARTING LINE +0.005 [0.13] MAXIMUM.
10. DIMENSIONS ARE INCHES [millimeters].
11. PAVE-SEAL CAN BE A BI-DIRECTIONAL HERMETIC SEAL FOR VACUUM AND MOST PRESSURES. FOR PRESSURES ABOVE 150 PSI (10 BAR), CHECK WITH SALES ENGINEERING.

12	1	-016 VITON	O-RING -016 VITON 75
11	A/R	PARKER O-LUBE	LUBRICANT O-RING BARIUM-BASED
10	1	AC3550-WH-V1	CABLE 4TP #24 CAT5 PVC WHITE
9	1	PC28 GREY	WIRE 28PVC UL1007 .016 7/#36
8	1	PC28 VIOLET	WIRE 28PVC UL1007 .016 7/#36
7	3	PC28 GREEN	WIRE 28PVC UL1007 .016 7/#36
6	2	PC28 BLUE	WIRE 28PVC UL1007 .016 7/#36
5	6	PC28 BLACK	WIRE 28PVC UL1007 .016 7/#36
4	1	PC20 UL1569 RED	WIRE 20PVC UL1569 .016 7/#28
3	1	PC20 UL1569 BLK	WIRE 20PVC UL1569 .016 7/#28
2	A/R	PAVE-Seal 150	EPOXY BLACK
1	1	0130	HOUSING SPF12-E
ITEM	QTY	PART NUMBER	DESCRIPTION

ALL DIMENSIONS AND TOLERANCES APPLY TO FINISHED PART IN INCHES.
 ALLOWABLE TOLERANCES UNLESS SPECIFIED OTHERWISE: NONE ±0.5
 X.X DECIMAL ±0.1 X.XX DECIMAL ±0.02 X.XXX DECIMAL ±0.005
 ANGLES ±1 DEGREE SURFACE FINISH 128 microinch RMS

PAVE technology co.
 2751 Thunderhawk Court
 Dayton, OH 45414-3445
 U.S.A.
 tel (937) 890-1100
 fax (937) 8905165
 www.pavetechnologyco.com

DESCRIPTION
 SPF12-E-150-2/13/1-PC20/PC28/CAT5-12-12

PART NUMBER
4887

MATERIAL NOTED

REVISION LEVEL -

PROJECTION