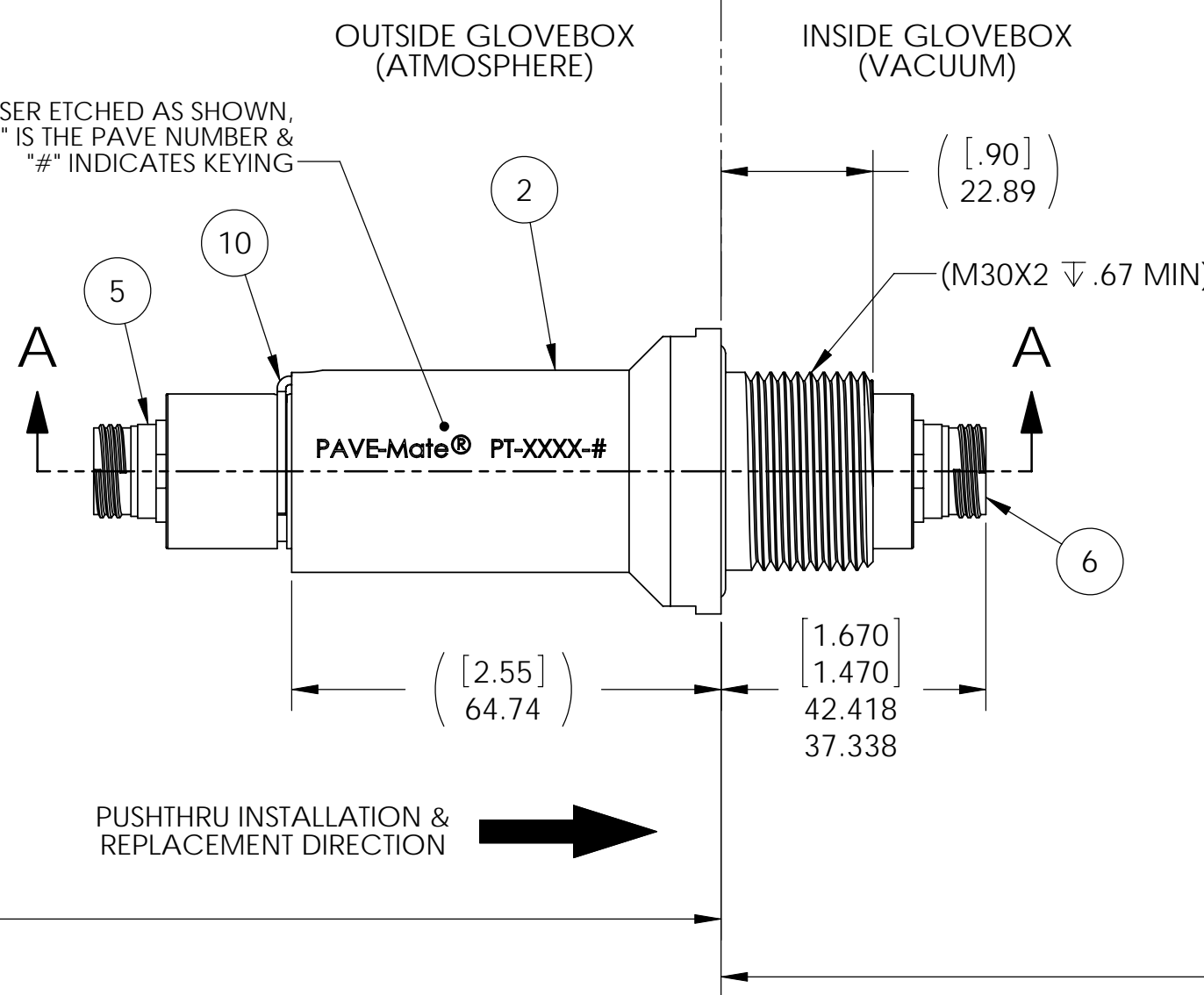
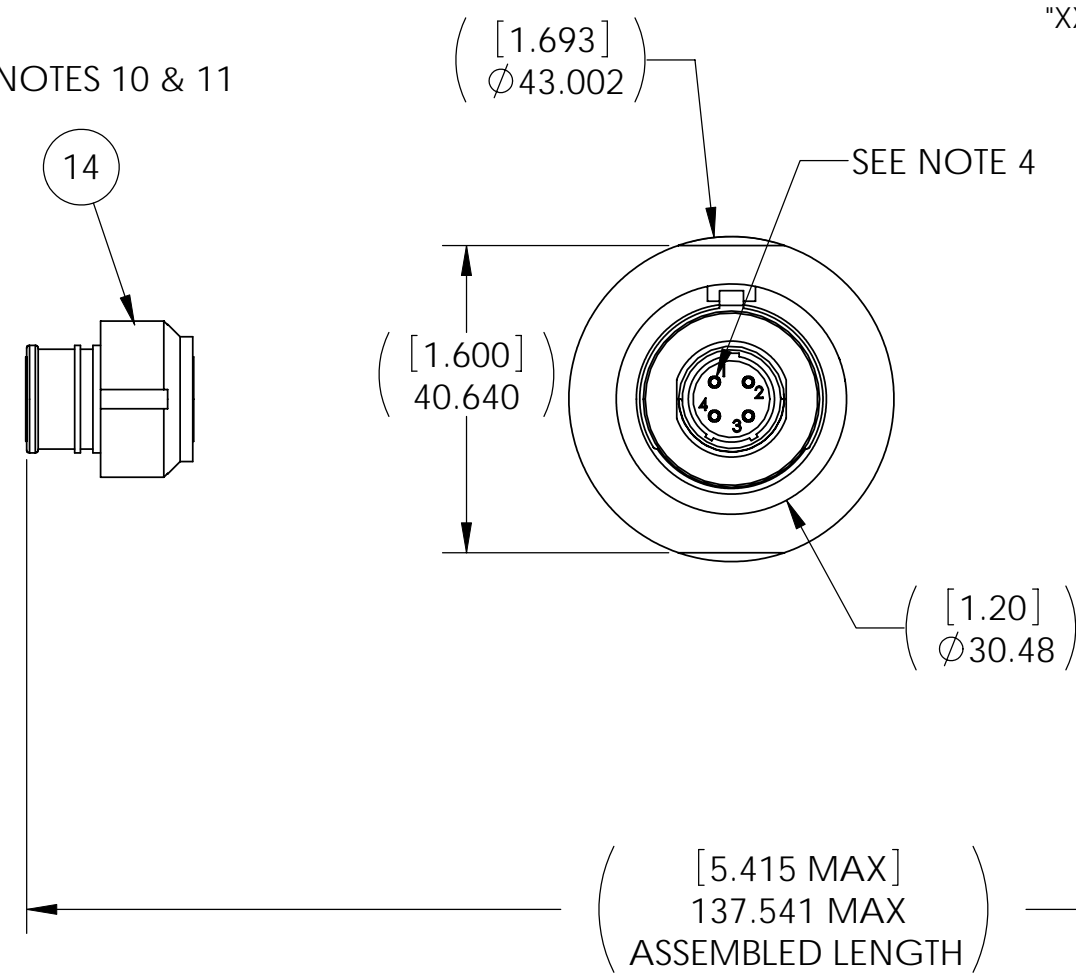
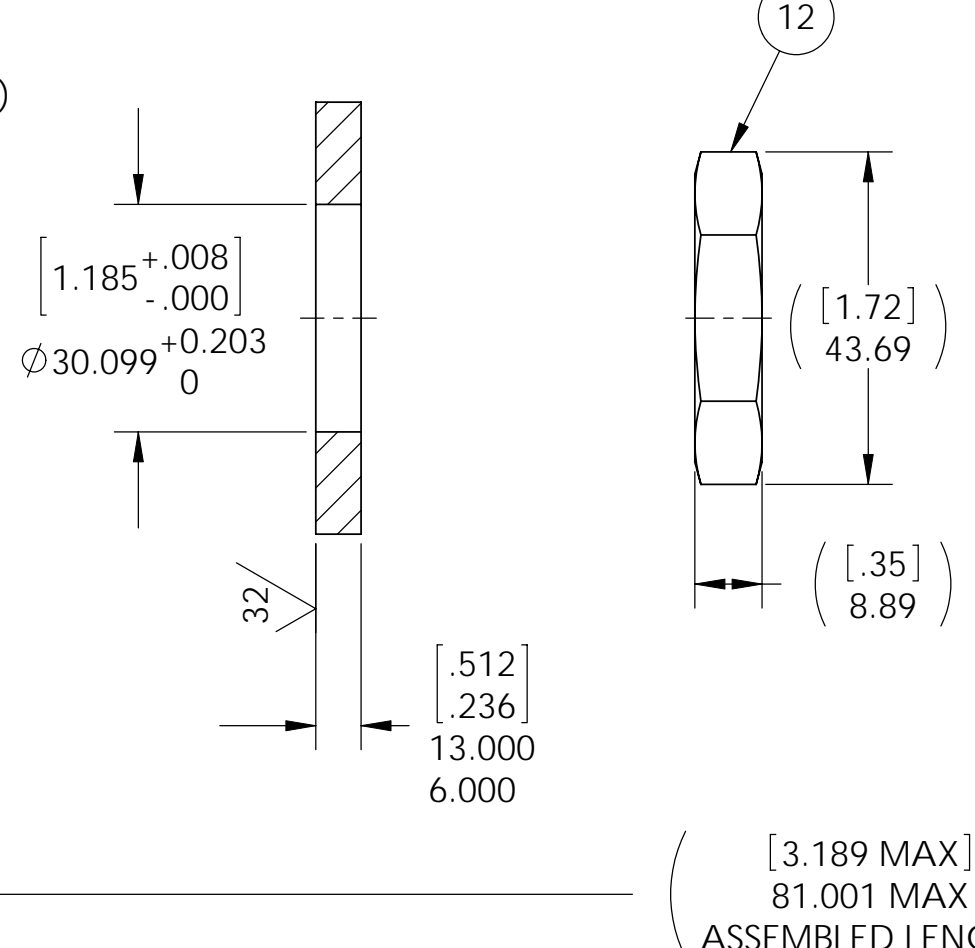


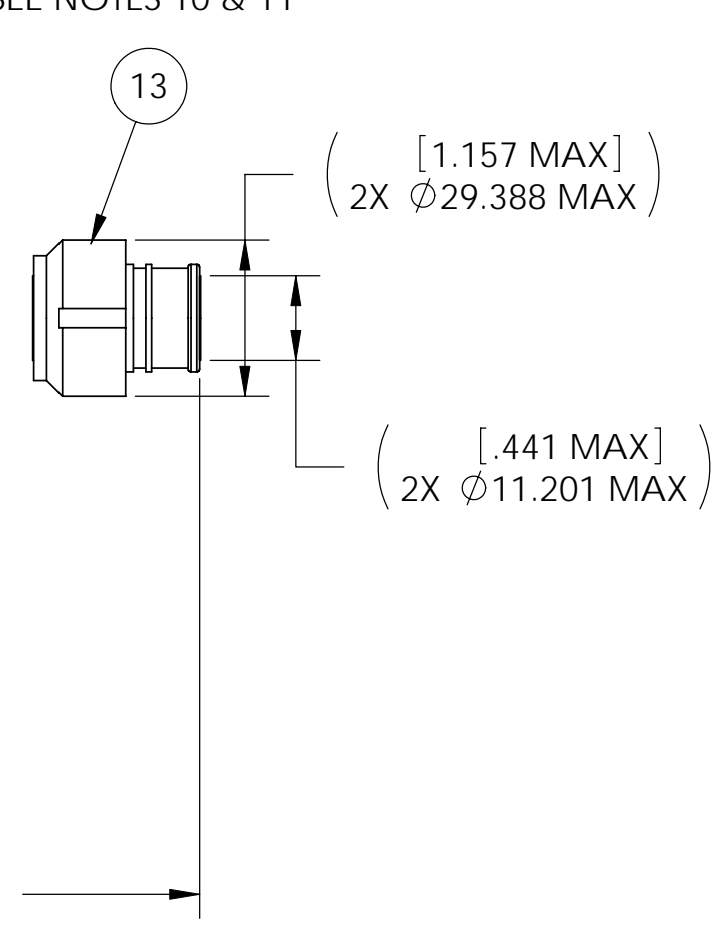
SEE NOTES 10 & 11



PT-VSM30 INSTALLATION PORT

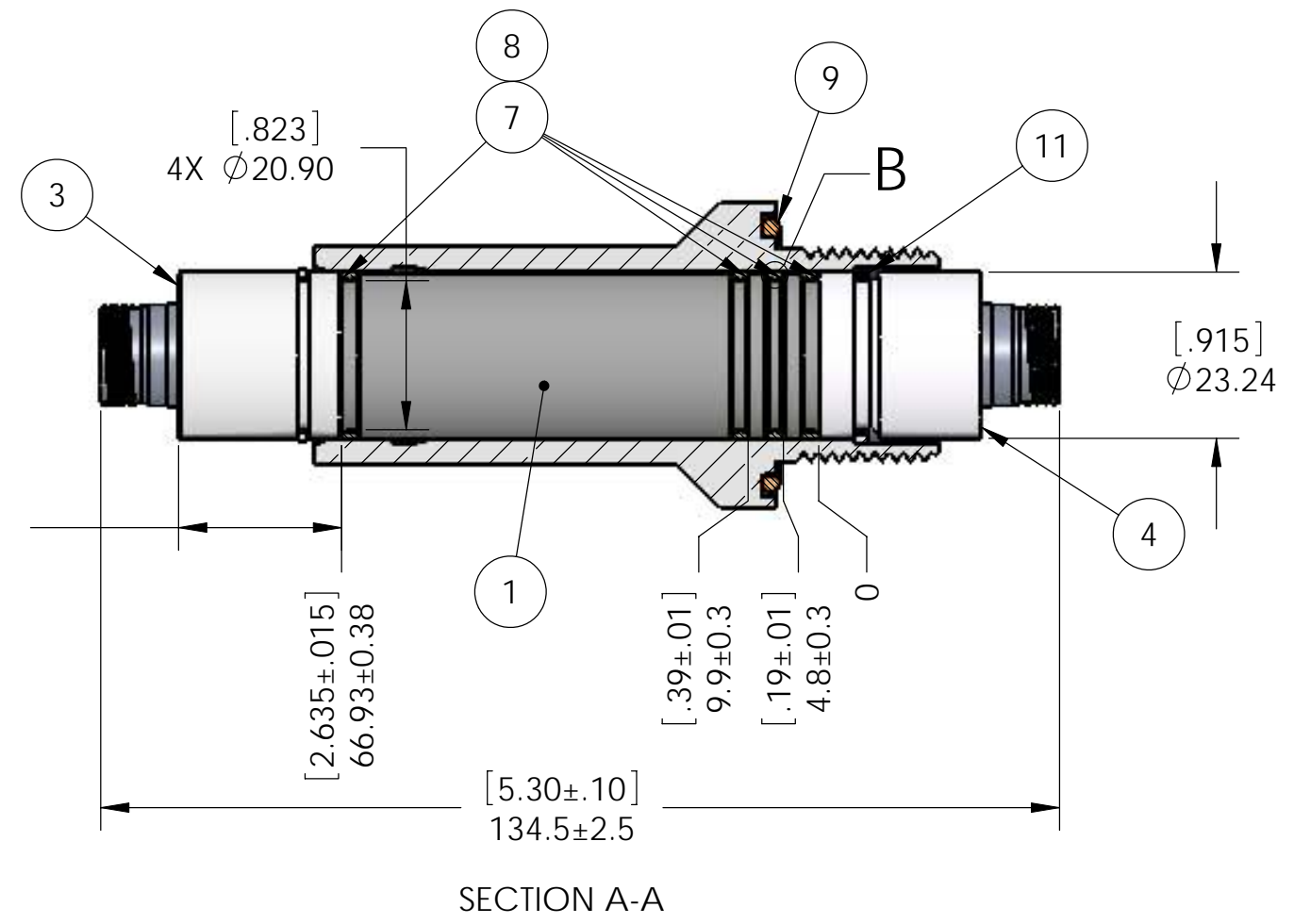


SEE NOTES 10 & 11



CONNECTOR TOOLING INFORMATION

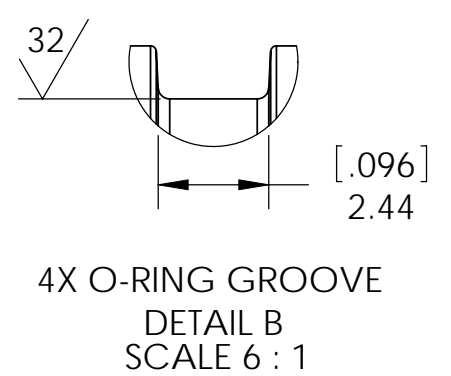
PART NUMBER	TOOL FUNCTION/DESCRIPTION
M22520/1-01	HAND CRIMP TOOL MIL-SPEC
M22520/1-04	CRIMP POSITIONER FOR M22520/1-01
ATML 0807B	INSERTION TOOL #16 CONTACT
ATML 0808B	REMOVAL TOOL #16 CONTACT
600-061	BANDING INSTALLATION TOOL



SPARE CONTACTS, BANDING, & PROTECTIVE CAP ORDERING INFORMATION

QTY	PART NUMBER	DESCRIPTION
1	4236-1-16P	PIN #16 FMLB (Au/Ni PLATED BeCu) SEE NOTE 4
3	4236-2-16P	PIN #16 (Au/Ni PLATED BeCu)
4	4236-1-16S	SOC #16 (Au/Ni PLATED BeCu W/SS HOOD)
2	4114SR	BAND 300 SERIES SS 8.125" X .120" PRE-COILED
2	3949	RCPT CAP W/ WIRE ROPE LANYARD & ATTACHMENT RING SS

- NOTES:
- HE LEAK TEST VACUUM 10X10<sup>-6</sup> CC/SEC OR LESS.
  - HYPOT 630 VDC 500 MEGOHMS MINIMUM 0.01 SECOND MINIMUM PIN TO PIN AND HOUSING WITH MATING CONNECTORS.
  - CONTINUITY TEST: <0.5 OHM PIN TO SOCKET WITH MATING CONNECTORS.
  - THE FIRST POSITION PIN CONTACT ("GROUND CONNECTOR PIN") IN ITEM 5 & ITEM 13 WILL BE SLIGHTLY LONGER FOR FIRST MATE/LAST BREAK ("FMLB"). ALL TESTS ARE PERFORMED AT ROOM TEMPERATURE.
  - ALL PARTS MUST PASS ALL TESTS.
  - NO VOIDS ARE ACCEPTABLE ON O-RING SEALING SURFACES, VOIDS SMALLER THAN Ø0.89 [0.035] ARE ACCEPTABLE ON ALL OTHER SURFACES.
  - REF-OPERATING TEMPERATURE -20°C TO 125°C.
  - THE "#" IN THE PAVE PART NUMBER, COMPONENT PART NUMBERS & ASSOCIATED DESCRIPTIONS IS FOR KEYING IDENTIFICATION. KEYS ARE FROM "1" THROUGH "6".
  - STAINLESS STEEL SHIELDING TERMINATION BANDS FOR ITEMS 13 & 14 ARE INCLUDED BUT NOT SHOWN.
  - TO ORDER SPARE PENETRATORS ADD "NP" TO THE PAVE PART NUMBER & ORDER CODE. THIS INDICATES ITEMS 13 & 14 (PLUGS) ARE NOT INCLUDED, ALL OTHER ITEMS LISTED IN THE BILL OF MATERIALS WILL BE INCLUDED. PART EXAMPLE: PAVE#: PT-4114-3NP  
DESCRIPTION: PT-VSM30-SS-150-4-16-MMTC9PS3(NP)
  - REF-REMOVEABLE MOLDED EPOXY CORES ARE DEFLASHED ON PARTING LINE +0.13 [0.005] MAXIMUM.
  - PAVE-SEAL CAN BE A BI-DIRECTIONAL HERMETIC SEAL FOR VACUUM AND MOST PRESSURES. FOR PRESSURES ABOVE 150 PSI (10 BAR), CHECK WITH SALES ENGINEERING.
  - REF-STORE ASSEMBLIES IN A CLEAN, DRY PLACE IN SEALED POLY BAG (AS SUPPLIED WITH PLASTIC PROTECTIVE CAPS) BETWEEN -20°C AND 60°C.
  - DIMENSIONS ARE MILLIMETERS [INCHES].



ITEM	QTY	PART NUMBER	DESCRIPTION
1	A/R	PAVE-Seal 150	MOLDED REPLACEABLE HERMETIC EPOXY PUSHTHRU CORE BLACK
2	1	4060	HOUSING VSM30-SS (304SS)
3	1	4283	ADAPTER SLEEVE A-R/RR 304SS C3 9/16-24
4	1	4282	ADAPTER SLEEVE A-WSR 304SS C3 9/16-24
5	1	PT-4114-R-PN-#	RCPT (304SS SHELL/GLCP-30F/FLUOROSILICONE) 4#16 PIN (Au/Ni PLATED BeCu) MM KEYED#
6	1	PT-4114-R-SN-#	RCPT (304SS SHELL/GLCP-30F/FLUOROSILICONE) 4#16 SOC (Au/Ni PLATED BeCu W/SS HOOD) MM KEYED#
7	4	-019 VITON	O-RING -019 VITON 75
8	A/R	DC 710	LUBRICANT O-RING DOW CORNING 710 FLUID
9	1	-125 VITON	O-RING -125 VITON 75
10	1	4068	ANTI-ROTATION RETAINING RING SIZE 3 (304SS)
11	1	4069	ANTI-WITHDRAW SPRING RING SIZE 3 (304SS)
12	1	4067	NUT M30X2-SS (316LSS)
13	1	4114-#P	SEE NOTE 11 PLUG W/ BANDED BACKSHELL (304SS SHELL/GLCP-30F/FLUOROSILICONE) 4#16 PIN (Au/Ni PLATED BeCu) MM KEYED#, 300 SERIES SS BAND INCLUDED
14	1	4114-#S	SEE NOTE 11 PLUG W/ BANDED BACKSHELL (304SS SHELL/GLCP-30F/FLUOROSILICONE) 4#16 SOC (Au/Ni PLATED BeCu W/SS HOOD) MM KEYED#, 300 SERIES SS BAND INCLUDED

**PAVE Technology Co.**  
 2751 Thunderhawk Court  
 Dayton, OH 45414-3445  
 U.S.A.  
 tel (937) 890-1100  
 fax (937) 8905165  
 www.pavetechnologyco.com

DESCRIPTION: PAVE-Mate® I Connectors  
 PT-VSM30-SS-150-4-16-MMTC9PS#

MATERIAL: NOTED

PART NUMBER: PT-4114-#

REVISION LEVEL: 3

PROJECTION:

FINISH: ALL DIMENSIONS AND TOLERANCES APPLY TO FINISHED PART IN MILLIMETERS. ALLOWABLE TOLERANCES UNLESS SPECIFIED OTHERWISE: NONE ±12.700, .XX DECIMAL ±2.540, .XXX DECIMAL ±0.508, .XXXX DECIMAL ±0.127, ANGLES ±1 DEGREE, SURFACE FINISH 128 microinch RMS