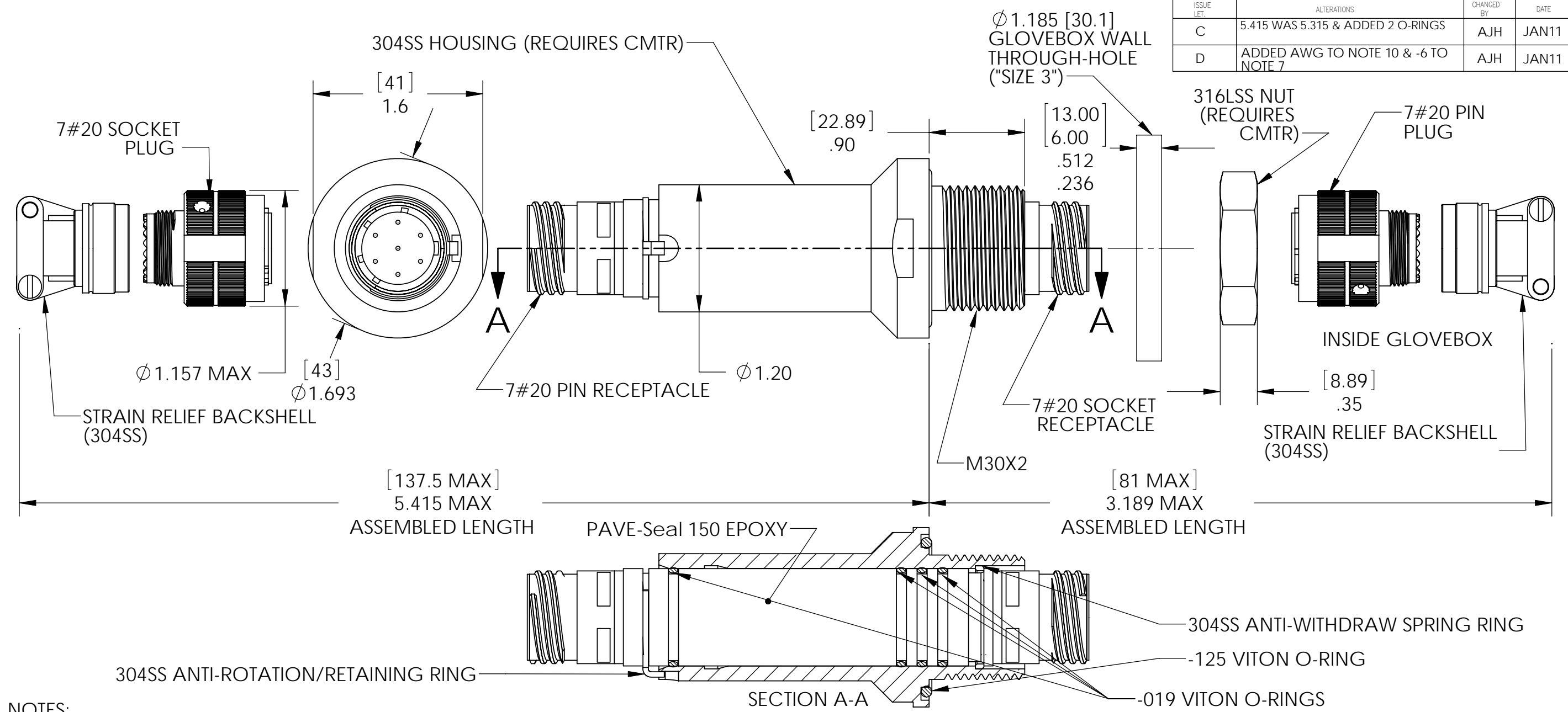


ISSUE LET.	ALTERATIONS	CHANGED BY	DATE
C	5.415 WAS 5.315 & ADDED 2 O-RINGS	AJH	JAN11
D	ADDED AWG TO NOTE 10 & -6 TO NOTE 7	AJH	JAN11



NOTES:

- HE LEAK TEST VACUUM 10×10^{-6} CC/SEC OR LESS.
- HYPOT 630 VDC 500 MEGOHMS MINIMUM 0.01 SECOND MINIMUM PIN TO PIN AND HOUSING.
- ALL TESTS ARE PERFORMED AT ROOM TEMPERATURE.
- ALL PARTS MUST PASS ALL TESTS.
- NO VOIDS ARE ACCEPTABLE ON O-RING SEALING SURFACES, VOIDS SMALLER THAN $\phi 0.035$ ARE ACCEPTABLE ON ALL OTHER SURFACES.
- REF-OPERATING TEMPERATURE -20°C TO 125°C .
- PT-4123-1 IS CLOCKED NORMALLY. PT-4123-2, PT-4123-3, PT-4123-4, PT-4123-5 & PT-4123-6 EACH HAVE KEYWAYS CLOCKED DIFFERENTLY.
- ALL FOUR CONNECTORS IN EACH ASSEMBLY WILL BE MADE OUT OF 304SS WITH NEOPRENE, GLCP-30F OR SILICONE INSERTS.
- THE PIN CONNECTORS WILL HAVE A LONGER PIN 1 FOR "FIRST MATE/LAST BREAK".
- CRIMP CONTACTS ACCEPT WIRE SIZE 20-24 AWG.

PAVE will meet the assembly and test specifications of the customer as documented on this assembly drawing. Any changes must be approved by PAVE.

PAVE technology co.

2751 Thunderhawk Court
Dayton, OH 45414-3445
U.S.A.
tel (937) 890-1100
fax (937) 8905165
www.pavetechnologyco.com

DESCRIPTION PAVE-Mate® I Connectors
PUSHTHRU VSM30-SS-150-7-20-38999PS

MATERIAL NOTED

DR. BY AJH	APPROVED BY	DRAWN FROM
CH'D BY	DATE 01 DEC 10	SCALE 1:1

PART NUMBER PT-4123	1	REVISION LEVEL D
	2	PROJECTION

FINISH

ALL DIMENSIONS AND TOLERANCES APPLY TO FINISHED PART IN INCHES.
ALLOWABLE TOLERANCES UNLESS SPECIFIED OTHERWISE: NONE ± 0.5
X.X DECIMAL ± 0.1 X.XX DECIMAL ± 0.02 X.XXX DECIMAL ± 0.005
ANGLES ± 1 DEGREE SURFACE FINISH 128 microinch RMS