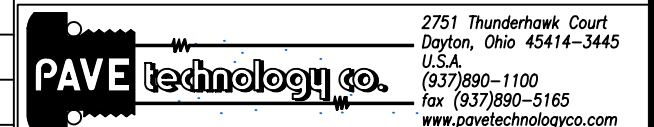


NOTES:

1. LEAK TEST: 80 PSI N<sub>2</sub>, NO BUBBLES 2 MINUTES MINIMUM.
2. OPTIONAL HE LEAK TEST @1 ATM. <math>10^{-7}</math> CC/S.
3. HYPOT 630 VDC 500 M $\Omega$  0.01 SEC MINIMUM, PIN TO PIN TO SHELL & HOUSING WITH MATING CONNECTORS.
4. CONTINUITY TEST <math>0.5 \Omega</math> PIN TO PIN.
5. ALL TESTS ARE PERFORMED AT ROOM TEMPERATURE.
6. PERCENTAGE OF PARTS TESTED WILL BE 100% (MAY BE A LESSER PERCENTAGE FOR LARGE PRODUCTION QUANTITIES, UNLESS OTHERWISE NOTED OR REQUIRED).
7. REF.-OPERATING TEMPERATURE -20°C TO 125°C.
8. NO VOIDS LARGER THAN  $\phi 0.035$  ARE ACCEPTABLE.
9. ITEMS 5 & 6 (NOT SHOWN) ARE SHIPPED WITH PART.

6	1	SC3116F10-6P	PLUG 6 #20 PIN
5	1	SC3116F10-6S	PLUG 6 #20 SOC
4	1	SC3112E10-6S	RCPT 6 #20 SOC
3	1	SC3112E10-6P	RCPT 6 #20 PIN
2	A/R	PAVE-Seal 150	EPOXY BLACK
1	1	3117	HOUSING PT12-B
ITEM	QTY	PART#	DESCRIPTION

ALL DIMENSIONS AND TOLERANCES APPLY TO FINISHED PART IN INCHES  
 ALLOWABLE TOLERANCES UNLESS SPECIFIED OTHERWISE: NONE  $\pm 0.5$   
 .X DECIMAL  $\pm 0.1$  .XX DECIMAL  $\pm 0.02$  .XXX DECIMAL  $\pm 0.005$   
 ANGLES  $\pm 1$  DEG SURFACE FINISH 128 microinch RMS



DESCRIPTION PAVE-Mate® I Connectors  
 PT12-B-150-6-20-3112PS

PART NUMBER  
 1332

REVISION  
 LEVEL A

PROJECTION