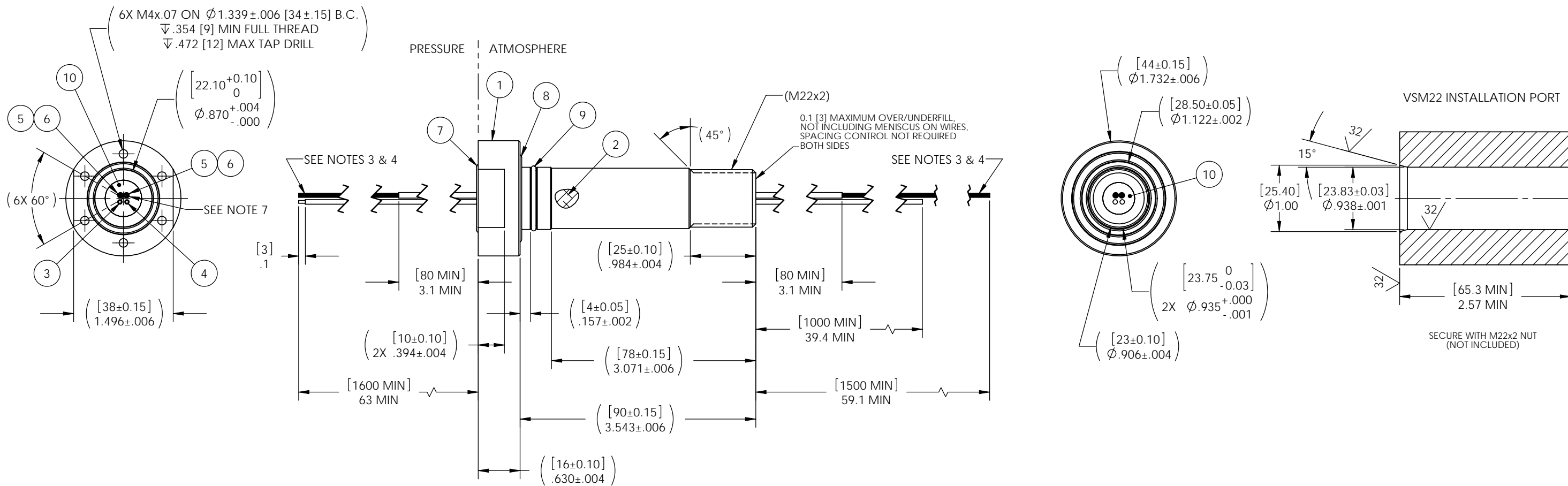
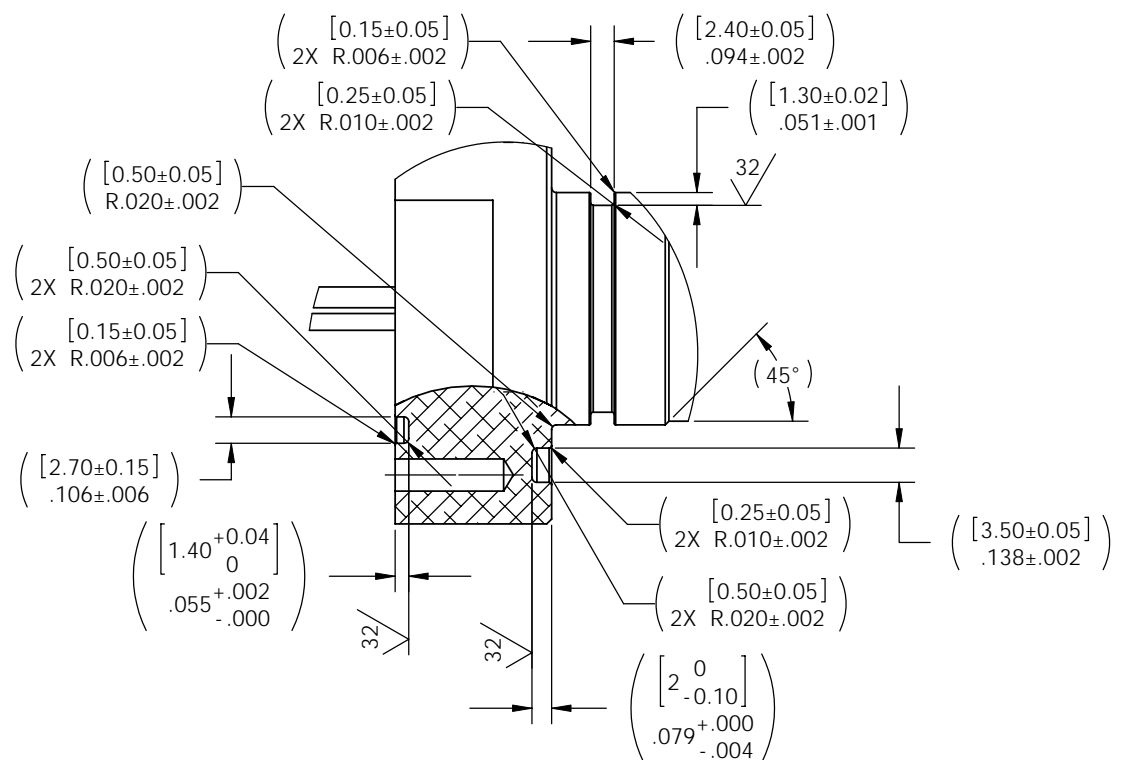


ISSUE	ALTERATIONS	CHANGED BY	DATE
B	.870+0.004/-.000 WAS .866+0.008/-.004	KHK	AUG15
C	REMOVED HOUSING ETCHING	KHK	MAR16



ADDITIONAL HOUSING DETAILS
SCALE: 2:1



NOTES:

- LEAK TEST: 5600 PSI [380 BAR], NO N2 BUBBLES 2 MINUTES MINIMUM. A GREEN PAINT DOT INDICATES THE PART HAS PASSED THE TEST.
- HYPOT 630 VDC 500 MEGOHMS MINIMUM 0.01 SECOND MINIMUM WIRE TO WIRE AND HOUSING.
- OPTICAL CONTINUITY CHECK WITH RED LASER, 18 MINIMUM GOOD FIBERS REQUIRED.
- ALL FIBERS WILL BE MARKED WITH A UNIQUE COLOR OR COLOR COMBINATION NEAR THE FIBER ENDS ON BOTH SIDES.
- ALL TESTS ARE PERFORMED AT ROOM TEMPERATURE.
- ALL PARTS MUST PASS ALL TESTS.
- WIRES & FIBERS SHALL BE ORIENTED AS SHOWN.
- REF-OPERATING TEMPERATURE -20°C TO 105°C.
- DIMENSIONS ARE INCHES [millimeters].

ITEM	QTY	PART NUMBER	DESCRIPTION
10	A/R	SILICONE	SILICONE GREEN RTV 56 DUROMETER
9	1	-019 NBR	O-RING -019 NBR 70 SHORE A
8	1	-122 NBR	O-RING -122 NBR 90 SHORE A
7	1	22X2MM VITON	O-RING 22mm ID X 2mm CS VITON 75
6	4	TFT-200-15	TUBING TEFLON .059 ID THIN WALL
5	20	BBSX WHITE	FIBER SINGLE MODE BENDBRIGHT-XS
4	1	6715-18 ORANGE	WIRE 18MPPE UL11028 16#30
3	1	6715-18 BLACK	WIRE 18MPPE UL11028 16#30
2	A/R	PAVE-Seal 150	EPOXY BLACK
1	1	4724	HOUSING VSM22-AL (6082-T6) ANODIZED MIL-A-8625, TYPE III, CLASS 1, 25 MICRON THICKNESS

PAVE will meet the assembly and test specifications of NIKHEF# AA7672 & AA7677 as documented on this assembly drawing. Any changes must be approved by PAVE.



DESCRIPTION: PAVE-Seal® Cable Harnesses
VSM22-AL-150-2/20-MPPE18/SMFO-1600mm-1000/1500mm

MATERIAL

DR. BY: KHK APPROVED BY: INFNITA

DATE: 22 APR 15 SCALE: 1:1

REVISION LEVEL: 1 C
PROJECTION:

FINISH: ALL DIMENSIONS AND TOLERANCES APPLY TO FINISHED PART IN INCHES. ALLOWABLE TOLERANCES UNLESS SPECIFIED OTHERWISE: NONE ±.05 XX DECIMAL ±0.1 XX DECIMAL ±0.02 XXXX DECIMAL ±.005 ANGLES ±1 DEGREE SURFACE FINISH 128 microinch RMS

4676