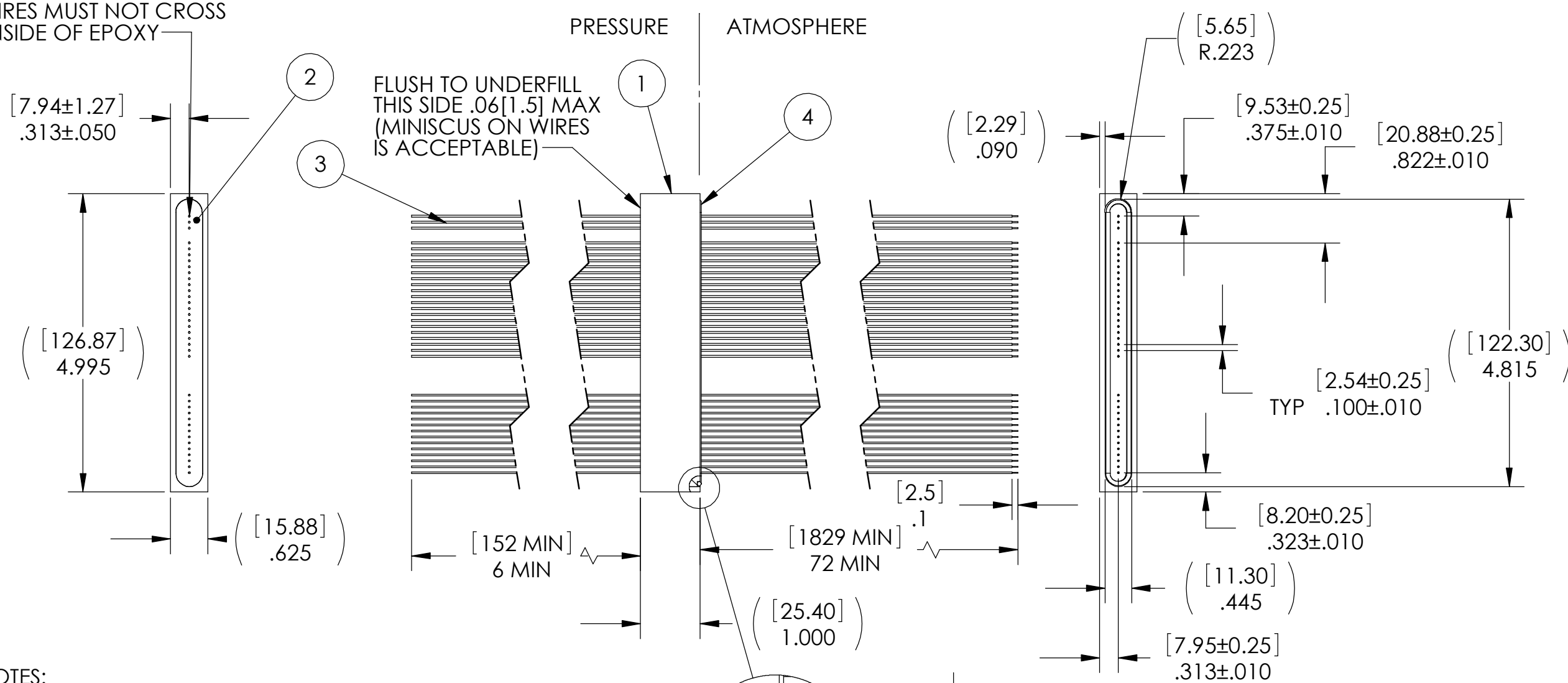
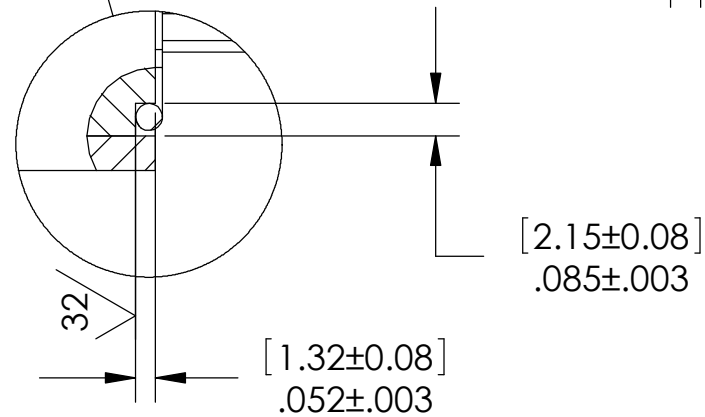


WIRES MUST NOT CROSS  
INSIDE OF EPOXY




NOTES:

1. LEAK TEST: 120 PSI, NO BUBBLES 2 MINUTES MINIMUM. A GREEN PAINT DOT INDICATES THE PART HAS PASSED THE TEST.
2. HYPOT 630 VDC 500 MEGOHMS MINIMUM 0.01 SECOND MINIMUM WIRE TO WIRE AND HOUSING.
3. ALL TESTS ARE PERFORMED AT ROOM TEMPERATURE.
4. ALL PARTS MUST PASS ALL TESTS.
5. NO COSMETIC SURFACE VOIDS ARE ACCEPTABLE ON O-RING SEALING SURFACES, COSMETIC SURFACE VOIDS SMALLER THAN  $\phi 0.035$  [0.89] ARE ACCEPTABLE ON ALL OTHER SURFACES.
6. REF-OPERATING TEMPERATURE -35°C TO 150°C.
7. DIMENSIONS ARE INCHES [millimeters].
8. PAVE-SEAL CAN BE A BI-DIRECTIONAL HERMETIC SEAL FOR VACUUM AND MOST PRESSURES. FOR PRESSURES ABOVE 150 PSI (10 BAR), CHECK WITH SALES ENGINEERING.
9. WIRES ARE TO BE LABELLED ON BOTH ENDS WITH BRADY WIRE MARKERS.




DETAIL A  
SCALE 2 : 1

4	1	-041 SILICONE	O-RING -041 SILICONE 70
3	37	PK26 TAN SOLID	WIRE 26 PEEK SOLID BARE COPPER .03"
2	A/R	PAVE-Seal 200	EPOXY BLACK
1	1	4818	HOUSING SP80/10-AL
ITEM	QTY	PART NUMBER	DESCRIPTION


 2751 Thunderhawk Court  
 Dayton, OH 45414-3445  
 U.S.A.  
 tel (937) 890-1100  
 fax (937) 8905165  
 www.pavetechnologyco.com

DESCRIPTION  
 SP80/10-AL-200-37-PK26-6-72

PART NUMBER <b>4755</b>	MATERIAL NOTED
REVISION LEVEL A	PROJECTION 

ALL DIMENSIONS AND TOLERANCES APPLY TO FINISHED PART IN INCHES.  
 ALLOWABLE TOLERANCES UNLESS SPECIFIED OTHERWISE: NONE ±0.5  
 X.X DECIMAL ±0.1 X.XX DECIMAL ±0.02 X.XXX DECIMAL ±0.005  
 ANGLES ±1 DEGREE SURFACE FINISH 128 microinch RMS