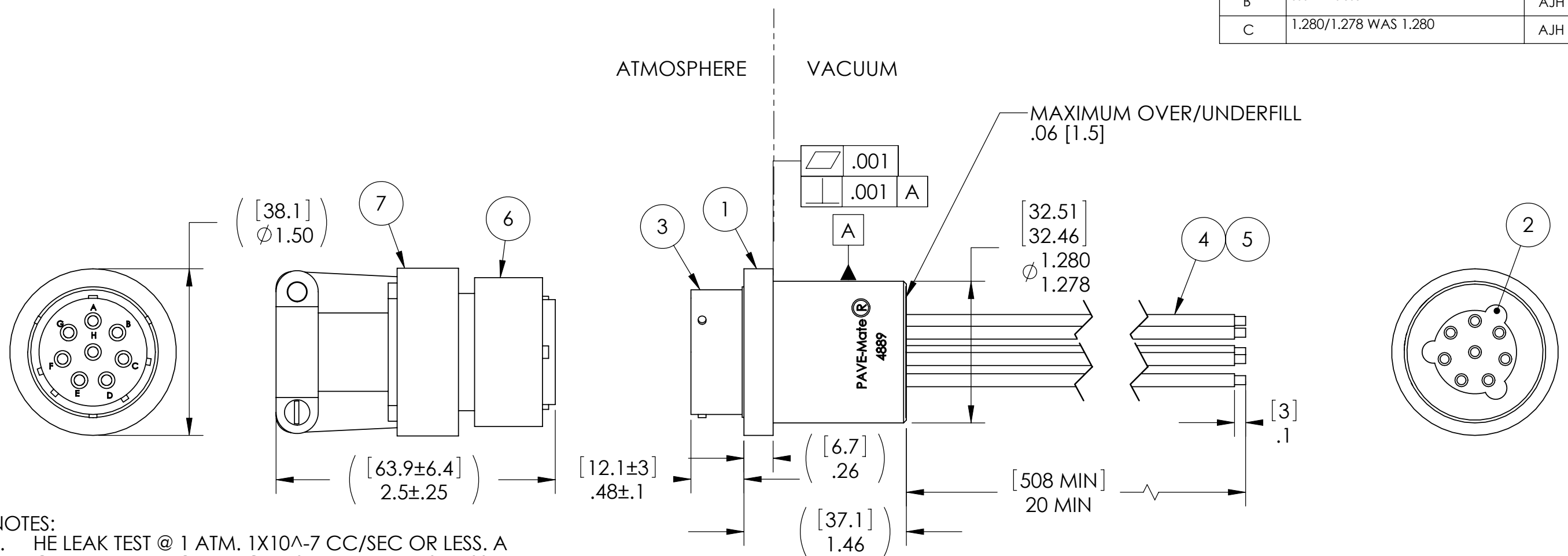


ISSUE LET.	ALTERATIONS	CHANGED BY	DATE
B	6061 WAS 5052	AJH	SEP16
C	1.280/1.278 WAS 1.280	AJH	SEP16



NOTES:

- HE LEAK TEST @ 1 ATM. 1X10⁻⁷ CC/SEC OR LESS. A GREEN PAINT DOT INDICATES THE PART HAS PASSED THE TEST.
- HYPOT 1000 VDC 500 MEGOHMS MINIMUM 10 SECONDS MINIMUM WIRE TO WIRE AND HOUSING WITH MATING CONNECTOR.
- CONTINUITY TEST <50mΩ PIN TO WIRE END WITH MATING CONNECTOR.
- ALCOHOL OR FOMBLIN YVAC 3 MAY BE USED TO LUBRICATE O-RINGS FOR VACUUM HELIUM LEAK TESTING.
- ALL TESTS ARE PERFORMED AT ROOM TEMPERATURE.
- ALL PARTS MUST PASS ALL TESTS.
- WIRE POSITIONING IS APPROXIMATE & VARIABLE.
- COSMETIC SURFACE VOIDS SMALLER THAN Ø0.035 [0.89] ARE ACCEPTABLE.
- REF-OPERATING TEMPERATURE -20°C TO 150°C.
- DIMENSIONS ARE INCHES [millimeters].
- PAVE-SEAL CAN BE A BI-DIRECTIONAL HERMETIC SEAL FOR VACUUM AND MOST PRESSURES. FOR PRESSURES ABOVE 150 PSI (10 BAR), CHECK WITH SALES ENGINEERING.

ITEM	QTY	PART NUMBER	DESCRIPTION
7	1	MS3417-18N	S/R SIZE 18 ALUMINUM ELECTROLESS NICKEL SHELL
6	1	MS3476L18-8S	PLUG 8#12 SOC ALUMINUM ELECTROLESS NICKEL SIZE 18 SHELL 26482 SERIES II
5	4	E12 BLACK	WIRE 12E MIL-W-16878/4 .013 19/#25
4	4	E12 RED	WIRE 12E MIL-W-16878/4 .013 19/#25
3	1	MS3470L18-8P	RCPT 8#12 PIN ALUMINUM ELECTROLESS NICKEL SIZE 18 SHELL 26482 SERIES II
2	A/R	PAVE-Seal 200	EPOXY BLACK
1	1	4897	HOUSING FL24-AL6061

PAVE will meet the assembly and test specifications of ROTONIX DWG#22369 as documented on this assembly drawing. Any changes must be approved by PAVE.

PAVE technology co.
 2751 Thunderhawk Court
 Dayton, OH 45414-3445
 U.S.A.
 tel (937) 890-1100
 fax (937) 8905165
 www.pavetechnologyco.com

DESCRIPTION PAVE-Mate® II Connectors
 FL24-AL-200-8-TE12-3470LP-20

MATERIAL NOTED

DR. BY KSM APPROVED BY DRAWN FROM ROTONCA

CH'D BY DATE 09 AUG 16 SCALE 1:1

PART NUMBER 4889 REVISION LEVEL C
 2 PROJECTION

FINISH ALL DIMENSIONS AND TOLERANCES APPLY TO FINISHED PART IN INCHES.
 ALLOWABLE TOLERANCES UNLESS SPECIFIED OTHERWISE: NONE ±0.5
 X.X DECIMAL ±0.1 X.XX DECIMAL ±0.02 X.XXX DECIMAL ±0.005
 ANGLES ±1 DEGREE SURFACE FINISH 128 microinch RMS