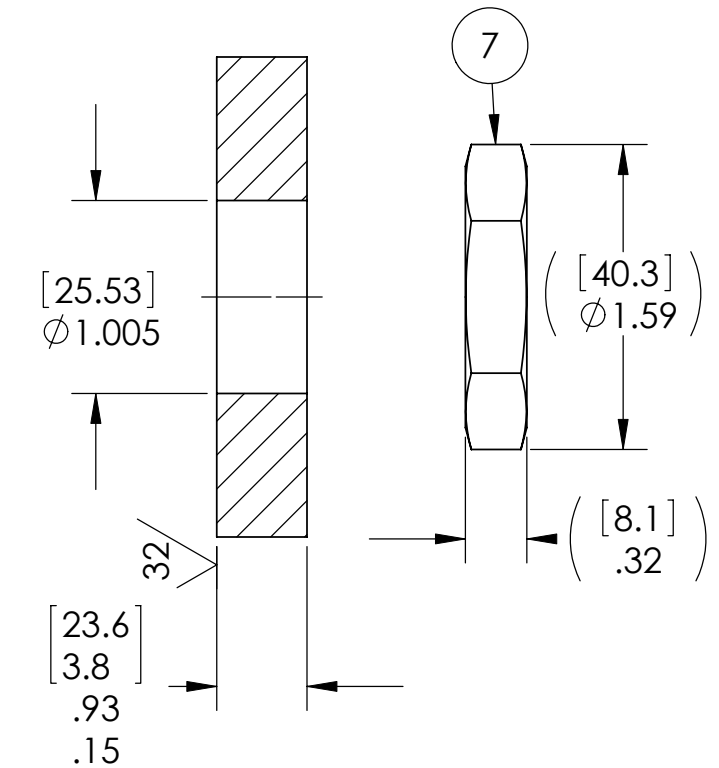


VS15L INSTALLATION PORT



PIN	WIRE
A	BLACK W/#1
B	BLACK W/#2
C	GREEN/YELLOW

NOTES:

1. LEAK TEST: 80 PSI, NO BUBBLES 4 MINUTES MINIMUM. A GREEN PAINT DOT INDICATES THE PART HAS PASSED THE TEST.
2. HYPOT 630 VDC 500 MEGOHMS MINIMUM 0.01 SECOND MINIMUM WIRE TO WIRE AND HOUSING.
3. CONTINUITY TEST MATING CONNECTOR TO WIRE ENDS <1Ω.
4. ALL TESTS ARE PERFORMED AT ROOM TEMPERATURE.
5. ALL PARTS MUST PASS ALL TESTS.
6. WIRE POSITIONING IS APPROXIMATE & VARIABLE.
7. COSMETIC SURFACE VOIDS SMALLER THAN $\phi 0.035$ [0.89] ARE ACCEPTABLE ON ALL OTHER SURFACES.
8. REF-OPERATING TEMPERATURE -20°C TO 90°C.
9. DIMENSIONS ARE INCHES [millimeters].
10. PAVE-SEAL CAN BE A BI-DIRECTIONAL HERMETIC SEAL FOR VACUUM AND MOST PRESSURES. FOR PRESSURES ABOVE 150 PSI (10 BAR), CHECK WITH SALES ENGINEERING.

7	1	0183	NUT VS15-SS
6	1	-215 VITON	O-RING -215 VITON 75
5	4	4-40X.3125 SHCS	SCREW SHCS 4-40X.3125-SS
4	1	A3081203	CABLE 3C 12AWG GRAY PVC JACKET
3	1	SCP02ZM16-10P	RCPT 3#12 PIN SILVER PLATED COPPER ALLOY CONTACTS NICKEL PLATED ALUMINUM SHELL
2	A/R	PAVE-Seal 150	EPOXY BLACK
1	1	3299	HOUSING VS15L-SS
ITEM	QTY	PART NUMBER	DESCRIPTION

PAVE technology co.

2751 Thunderhawk Court
Dayton, OH 45414-3445
U.S.A.
tel (937) 890-1100
fax (937) 8905165
www.pavetechnologyco.com

DESCRIPTION
VS15L-SS-150-1-PVC3C12-3102P-96

PART NUMBER
4892

MATERIAL NOTED

REVISION LEVEL -

PROJECTION

ALL DIMENSIONS AND TOLERANCES APPLY TO FINISHED PART IN INCHES.
ALLOWABLE TOLERANCES UNLESS SPECIFIED OTHERWISE: NONE ±0.5
X.X DECIMAL ±0.1 X.XX DECIMAL ±0.02 X.XXX DECIMAL ±0.005
ANGLES ±1 DEGREE SURFACE FINISH 128 microinch RMS