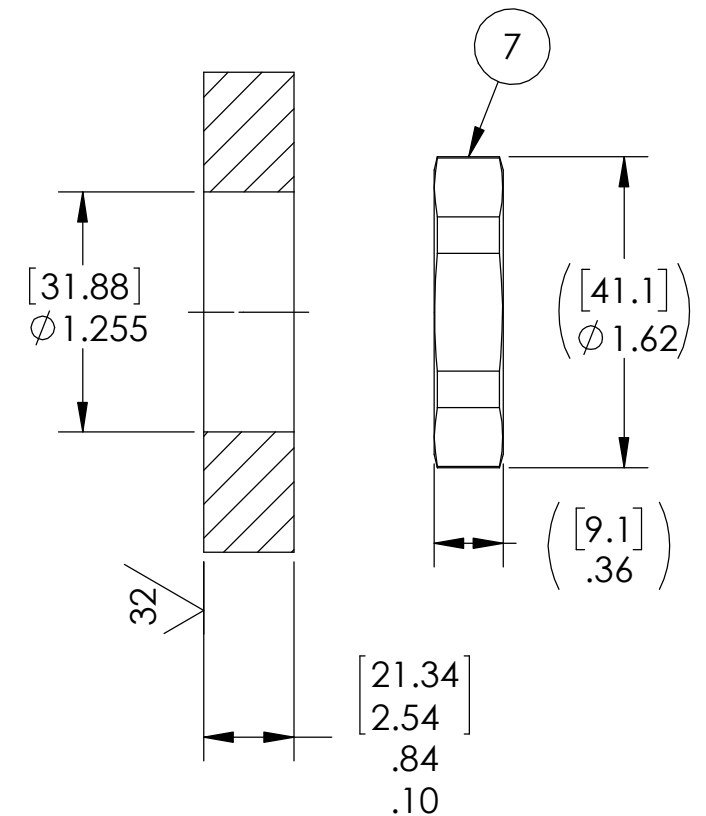



VS18 INSTALLATION PORT



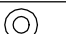
NOTES:

1. HE LEAK TEST @ 1 ATM.  $1 \times 10^{-8}$  CC/SEC OR LESS. A GREEN PAINT DOT INDICATES THE PART HAS PASSED THE TEST.
2. HYPOT 1000 VDC 500 MEGOHMS MINIMUM 0.01 SECOND MINIMUM PIN TO PIN AND HOUSING WITH MATING CONNECTOR.
3. CONTINUITY TEST: <0.5 OHM PIN TO SOLDER CUP.
4. ALCOHOL OR FOMBLIN YVAC 3 MAY BE USED TO LUBRICATE O-RINGS FOR VACUUM HELIUM LEAK TESTING.
5. ALL TESTS ARE PERFORMED AT ROOM TEMPERATURE.
6. ALL PARTS MUST PASS ALL TESTS.
7. SOLDER CUP POSITIONING IS APPROXIMATE & VARIABLE.
8. COSMETIC SURFACE VOIDS SMALLER THAN  $\phi 0.035$  [0.89] ARE ACCEPTABLE.
9. REF-OPERATING TEMPERATURE -20°C TO 125°C.
10. DIMENSIONS ARE INCHES [millimeters].
11. PAVE-SEAL CAN BE A BI-DIRECTIONAL HERMETIC SEAL FOR VACUUM AND MOST PRESSURES. FOR PRESSURES ABOVE 150 PSI (10 BAR), CHECK WITH SALES ENGINEERING.

8	1	SC3116F16-26S	PLUG 26#20 GOLD PLATED COPPER ALLOY SOCKETS W/ SOLDER CUP NICKEL PLATED ALUMINUM SHELL W/ STRAIN RELIEF
7	1	1014	NUT VS18-SS
6	1	-219 VITON	O-RING -219 VITON 75
5	26	AMP #66569	CONTACT SOLDER CUP #20 Sn/Ni PLATED BRONZE
4	4	1608-25	SCREW 4-40 X .25 BH SOC SS
3	1	SC3112E16-26P	RCPT 26#20 GOLD PLATED COPPER ALLOY PINS, NEOPRENE INSERT, NICKEL PLATED ALUMINUM SHELL
2	A/R	PAVE-Seal 150	EPOXY BLACK
1	1	3324	HOUSING VS18-SS
<b>ITEM</b>	<b>QTY</b>	<b>PART NUMBER</b>	<b>DESCRIPTION</b>


 2751 Thunderhawk Court  
 Dayton, OH 45414-3445  
 U.S.A.  
 tel (937) 890-1100  
 fax (937) 8905165  
 www.pavetechnologyco.com

DESCRIPTION  
 VS18-SS-150-26-20-3112P-SC

PART NUMBER	MATERIAL	NOTED
<b>5048</b>		
REVISION LEVEL	-	PROJECTION
		

ALL DIMENSIONS AND TOLERANCES APPLY TO FINISHED PART IN INCHES.  
 ALLOWABLE TOLERANCES UNLESS SPECIFIED OTHERWISE: NONE ±0.5  
 X.X DECIMAL ±0.1 X.XX DECIMAL ±0.02 X.XXX DECIMAL ±0.005  
 ANGLES ±1 DEGREE SURFACE FINISH 128 microinch RMS