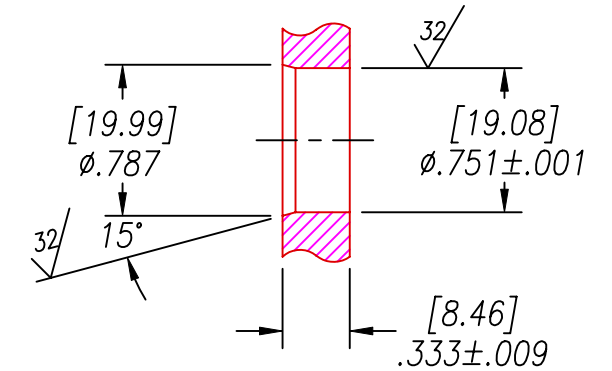


SPF12 INSTALLATION PORT



RECOMMENDED RETAINING RING  
TRUARC #5100-75 OR EQUAL

NOTES:

1. HE LEAK TEST @1 ATM.  $1 \times 10^{-7}$  CC/S OR LESS. CLEAN O-RING WITH METHANOL BEFORE INSERTING INTO TEST PORT.
2. HYPOT 630 VDC 500 MΩ 0.01 SEC MINIMUM, CENTER CONDUCTOR TO SHIELD.  
2.5 KVDC HYPOT TEST WITH 10 μA MAXIMUM LEAKAGE CENTER CONDUCTOR TO LEAK TEST PORT.
3. ALL TESTS ARE DONE AT ROOM TEMPERATURE & HUMIDITY.
4. ALL PARTS MUST PASS ALL TESTS.
5. CONTINUITY TEST FROM END OF RG59/U TO END OF BUS WIRE < 185 mΩ,  
TO END OF BLACK WIRE < 35 mΩ.
6. NO VOIDS ARE ACCEPTABLE ON O-RING SEALING SURFACES, VOIDS SMALLER THAN  $\phi.035$  ARE ACCEPTABLE ON ALL OTHER SURFACES.
7. DIMENSIONS ARE INCHES[mm].
8. ALCOHOL NEEDS TO BE USED TO LUBRICATE O-RINGS FOR HELIUM TESTING AND INSTALLATION.

WIRING CHART	
FROM	TO
ITEM 6-COND	ITEM 4 BUS
ITEM 6-SHIELD	ITEM 5 BLK

ITEM	QTY	PART#	DESCRIPTION
7	1	UPCSCI#1521 ORL	TUBING FEP 1/16"ID X 1/8"OD
6	1	RG59/U	BELDEN 8241A OR EQUAL COAX
5	1	E20 SOLID BLK	WIRE 20E UL1213 SOLID CONDUCTOR
4	1	TIN COPPER #20	WIRE 20 TINNED SOLID
3	1	-016 VITON	O-RING -016 VITON 75
2	A/R	PAVE-Seal 150	EPOXY BLUE
1	1	0130	HOUSING SPF12-E

ALL DIMENSIONS AND TOLERANCES APPLY TO FINISHED PART IN INCHES  
 ALLOWABLE TOLERANCES UNLESS SPECIFIED OTHERWISE: NONE +/-0.5  
 .X DECIMAL +/- 0.1 .XX DECIMAL +/- 0.02 .XXX DECIMAL +/-0.005  
 ANGLES +/- 1 DEG SURFACE FINISH 128 microinch RMS

2751 Thunderhawk Court  
Dayton, Ohio 45414-3445  
U.S.A.  
(937)890-1100  
fax (937)890-5165  
www.pavetechnologyco.com

**PAVE technology co.**

DESCRIPTION PAVE-Seal® Cable Harnesses  
SPF12-E-150-1/1/1-RG59U/E20/BUS20-36-15

PART NUMBER  
**4998**

REVISION LEVEL  
**A**

PROJECTION