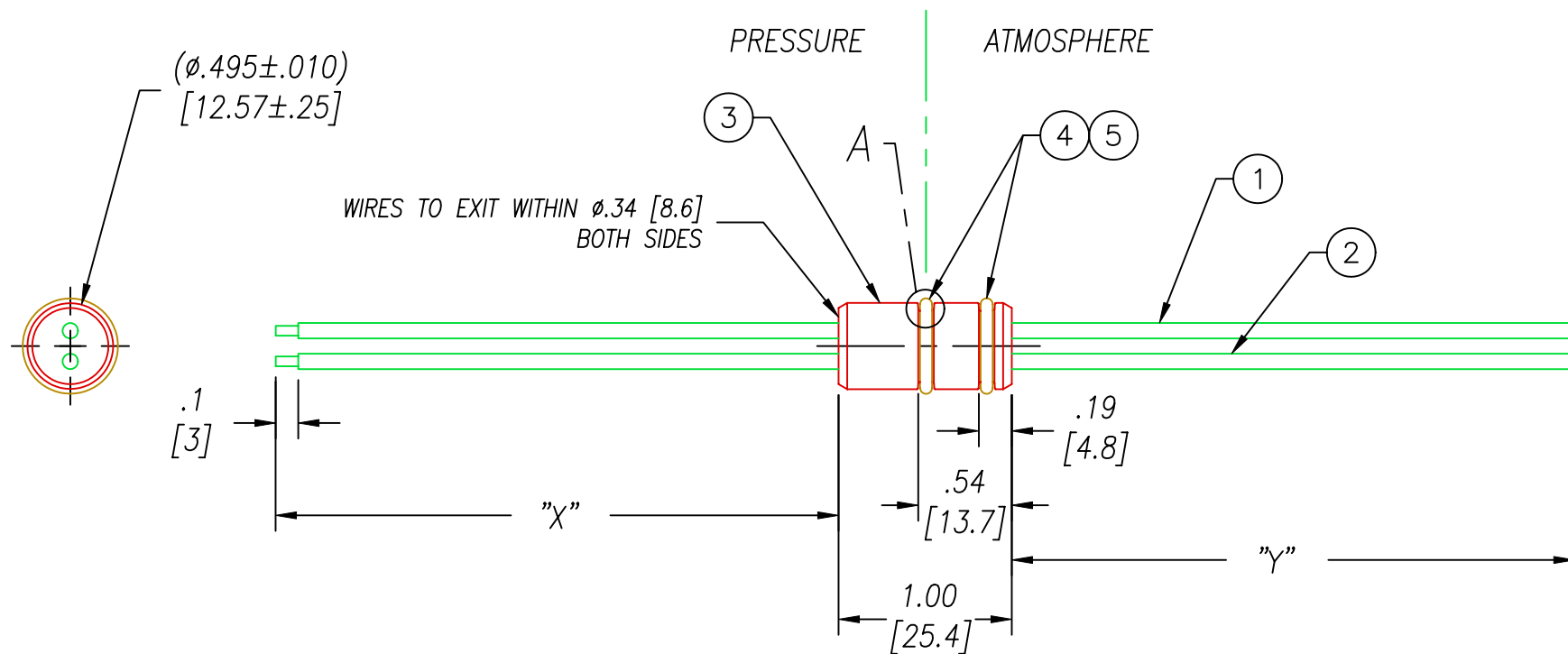
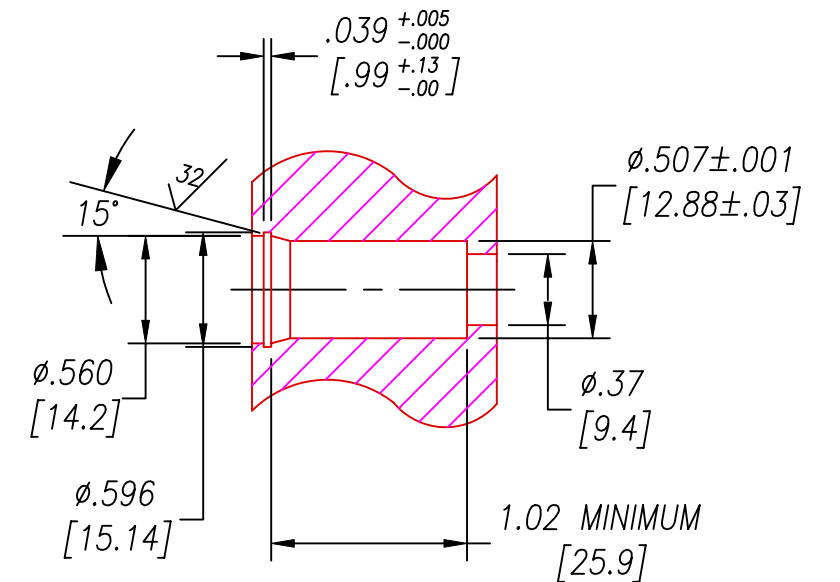


PART#	"X"	"Y"	ITEM# 4	DESCRIPTION ITEM# 4	TEMPERATURE RANGE
2918	3.25±.25 [82.6±6.4]	6.00±.25 [152.4±6.4]	-012 VITON	O-RING -012 VITON 75	-20°C TO 155°C
2918-1	7.87 [200] MINIMUM	7.87 [200] MINIMUM	-012 VITON LT	O-RING -012 LOW-TEMP VITON 75	-40°C TO 155°C
2918-2	19.69 [500] MINIMUM	19.69 [500] MINIMUM	-012 VITON LT	O-RING -012 LOW-TEMP VITON 75	-40°C TO 155°C

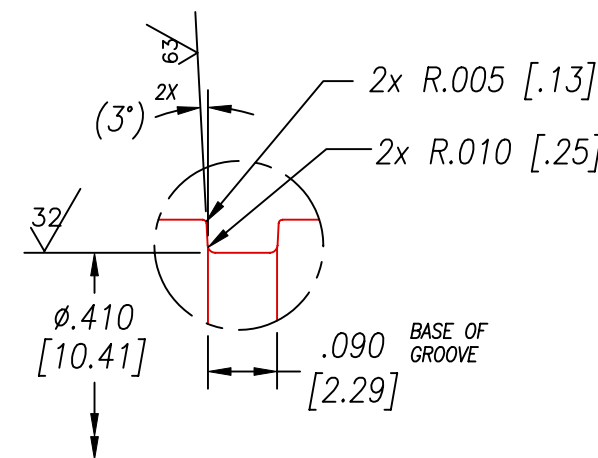


SP8L INSTALLATION PORT



RECOMMENDED RETAINING RING  
TRUARC N5000-56 OR EQUAL

2x O-RING GROOVE  
DETAIL A  
SCALE: 4:1



NOTES:

1. LEAK TEST: 80 PSI, NO BUBBLES 1 MINUTE MINIMUM. A GREEN PAINT DOT INDICATES THE PART HAS PASSED THE TEST.
2. HYPOT 630 VDC 500 MΩ 0.01 SEC MINIMUM, WIRE TO WIRE.
3. ALL TESTS ARE PERFORMED AT ROOM TEMPERATURE.
4. ALL PARTS MUST PASS ALL TESTS.
5. WIRES MUST BE FLEXIBLE AS THEY EXIT HOUSING.
6. NO COSMETIC SURFACE VOIDS ARE ACCEPTABLE ON O-RING SEALING SURFACES, COSMETIC SURFACE VOIDS SMALLER THAN  $\phi 0.035$  [ $\phi 0.89$ ] ARE ACCEPTABLE ON ALL OTHER SURFACES.
7. REF-OPERATING TEMPERATURE RANGE SEE TABLE.
8. REF-PARTS ARE DEFLASHED ON PARTING LINE +0.005 [0.13] MAXIMUM.
9. DIMENSIONS ARE INCHES [millimeters].
10. PAVE-SEAL CAN BE A BI-DIRECTIONAL HERMETIC SEAL FOR VACUUM AND MOST PRESSURES. FOR PRESSURES ABOVE 150 PSI (10 BAR), CHECK WITH SALES ENGINEERING.

5	A/R	PARKER O-LUBE	LUBRICANT O-RING BARIUM-BASED
4	2	SEE TABLE	SEE TABLE
3	A/R	PAVE-Seal 200UL94	EPOXY BLACK
2	1	TZ16 BK	WIRE 16 TEFZEL MIL-W-22759/16 19/#29
1	1	TZ16 RD	WIRE 16 TEFZEL MIL-W-22759/16 19/#29
ITEM	QTY	PART NUMBER	DESCRIPTION



DESCRIPTION PAVE-Seal@ Cable Harnesses  
SP8L-E-200UL94-2-TZ16-X-Y

PART NUMBER \*SEE TABLE

2918\*

REVISION LEVEL C

PROJECTION

ALL DIMENSIONS AND TOLERANCES APPLY TO FINISHED PART IN INCHES  
ALLOWABLE TOLERANCES UNLESS SPECIFIED OTHERWISE: NONE +/-0.5  
.X DECIMAL +/- 0.1 .XX DECIMAL +/- 0.02 .XXX DECIMAL +/-0.005  
ANGLES +/- 1 DEG SURFACE FINISH 128 microinch RMS