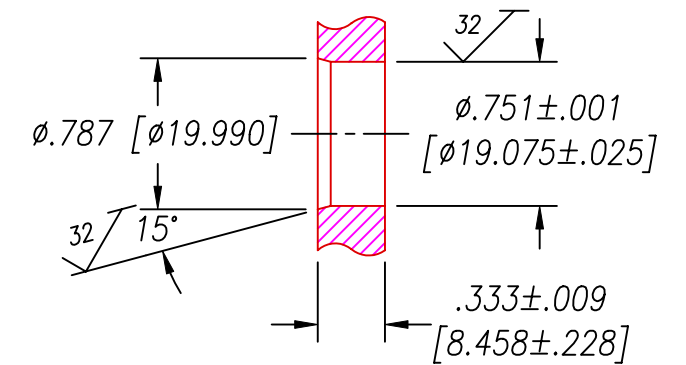


SPF12 INSTALLATION PORT



RECOMMENDED RETAINING RING  
TRUARC #5100-75 OR EQUAL

NOTES:

1. HE LEAK TEST @1 ATM.  $1 \times 10^{-7}$  CC/S OR LESS. A GREEN PAINT DOT INDICATES THE PART HAS PASSED THE TEST.
2. HIPOT 630 VDC 500 MΩ .01 SEC MINIMUM, WIRE TO WIRE.
3. ALL TESTS ARE PERFORMED AT ROOM TEMPERATURE.
4. ALL PARTS MUST PASS ALL TESTS.
5. REF-OAL DOES NOT INCLUDE OVERFILL ON ATMOSPHERE SIDE OF HOUSING.
6. DIMENSIONS ARE INCHES [millimeters].
7. NO VOIDS LARGER THAN  $\phi 0.035$  [0.89] ARE ACCEPTABLE.
8. REF - OPERATING TEMPERATURE RANGE: -20 TO 125°C.
9. PAVE-SEAL CAN BE A BI-DIRECTIONAL HERMETIC SEAL FOR VACUUM AND MOST PRESSURES. FOR PRESSURES ABOVE 150 PSI (10 BAR), CHECK WITH SALES ENGINEERING.
10. ALCOHOL NEEDS TO BE USED TO LUBRICATE O-RINGS FOR HELIUM TESTING AND INSTALLATION.
11. WIRE COLOR POSITIONS ARE APPROXIMATE AND VARIABLE.

18	1	EE22 UL1180 YLW	WIRE 22EE UL1180 7/#30
17	1	EE22 UL1180 WHT	WIRE 22EE UL1180 7/#30
16	1	EE22 UL1180 VIO	WIRE 22EE UL1180 7/#30
15	1	EE22 UL1180 RED	WIRE 22EE UL1180 7/#30
14	1	EE22 UL1180 ORG	WIRE 22EE UL1180 7/#30
13	1	EE22 UL1180 GRY	WIRE 22EE UL1180 7/#30
12	1	EE22 UL1180 GRN	WIRE 22EE UL1180 7/#30
11	1	EE22 UL1180 BRN	WIRE 22EE UL1180 7/#30
10	1	EE22 UL1180 BLU	WIRE 22EE UL1180 7/#30
9	1	EE22 UL WHT/YEL	WIRE 22EE UL1180 7/#30
8	1	EE22 UL WHT/RED	WIRE 22EE UL1180 7/#30
7	1	EE22 UL BLK	WIRE 22EE UL1180 7/#30
6	1	EE22 UL WHT/GRN	WIRE 22EE UL1180 7/#30
5	1	EE22 UL WHT/BLU	WIRE 22EE UL1180 7/#30
4	1	EE22 UL WHT/BLK	WIRE 22EE UL1180 7/#30
3	1	-016 VITON	O-RING -016 VITON 75
2	A/R	PAVE-Seal 150	EPOXY BLACK
1	1	0130	HOUSING SPF12-E
ITEM	QTY	PART#	DESCRIPTION

2751 Thunderhawk Court  
Dayton, Ohio 45414-3445  
U.S.A.  
(937)890-1100  
fax (937)890-5165  
www.pavetechnologyco.com

**PAVE technology co.**

DESCRIPTION PAVE-Seal® Cable Harnesses  
SPF12-E-150-15-TEE22-36-15

PART NUMBER  
4996

REVISION LEVEL  
A

PROJECTION

ALL DIMENSIONS AND TOLERANCES APPLY TO FINISHED PART IN INCHES  
ALLOWABLE TOLERANCES UNLESS SPECIFIED OTHERWISE: NONE +/-0.5  
.X DECIMAL +/- 0.1 .XX DECIMAL +/- 0.02 .XXX DECIMAL +/-0.005  
ANGLES +/- 1 DEG SURFACE FINISH 128 microinch RMS